

**SRI RAMAKRISHNA
DENTAL COLLEGE AND
HOSPITAL**

Coimbatore

GREEN AUDIT

REPORT




APRIL 2021

GREEN AUDIT REPORT

**THIS IS TO CERTIFY THAT A GREEN AND ENVIRONMENTAL AUDIT HAS
BEEN CARRIED OUT IN THE FOLLOWING UTILITY AS PER THE GUIDELINES
IN THE MONTH OF APRIL 2021**

NAME OF THE ORGANISATION	SRI RAMAKRISHNA DENTAL COLLEGE AND HOSPITAL, COIMBATORE
PERIOD OF AUDIT	APRIL 2021
NAME OF THE CERTIFIED AUDITOR	Dr.S.HEMA, M.E., Ph.D.,(Envi.Engg.), EMS ISO 14001:2015 LEAD AUDITOR & IGBC ACCREDITED PROFESSIONAL

**Dr. S. HEMA, M.E., Ph.D.,
EMS LEAD AUDITOR - ISO 14001-2015
IGBC Accredited Professional
Associate Professor
Department of Civil Engineering
Sri Ramakrishna Engineering College
Coimbatore - 641 022.**


Signature of Auditor

**Dr.S.HEMA, M.E., Ph.D (Envi.Engg).,
ISO 14001 LEAD AUDITOR &
IGBC ACCREDITED PROFESSIONAL**

CONTENTS

S.No.	TITLE	P.No.
1.	Introduction	2
2.	Environmental Audit in Academic Institutions	2
2.1	Aims and Objectives of Audits	2
3.	About the Institution	3
4.	Objectives of Audit	3
5.	Water Audit	4
5.1	Methodology	4
5.2	Water Supply	5
5.3	Plumbing Fixtures	9
5.4	Rain water harvesting and wastewater generation	14
5.5	Recommendations	14
6.	Waste Audit	16
6.1	Waste audit Methodology	15
6.2	Recommendations	20
7.	Air Quality and Noise Audit	21
8.	Green Campus	22
9.	Final Recommendations	24

GREEN AUDIT

1. INTRODUCTION

Green audit is the tool of management system used methodologically for protection and conservation of the environment. It is also used for the sustenance of the environment. The audit suggests different standard parameters, methods and projects for environmental protection. It can be adopted by any industry, organization, institute and even small residences. The green audit is useful to detect and monitor sources of pollution and it emphasizes on management of all types of wastes, monitoring of energy consumption, monitoring of quality and quantity of water, monitoring of hazards, safety of stakeholders and even the management of disasters.

2. ENVIRONMENTAL AUDIT IN ACADEMIC INSTITUTES

In 2006, Government of India has declared the National Environment Policy 2006 and made green audit mandatory to each industry. According to the policy, it is a response to India's national commitment to a clean environment, mandated in the Constitution in Articles 48 A and 51 A, and strengthened by judicial interpretation of Article 21 (National Environmental Policy, 2006). It is recognized that the maintenance of the healthy environment is not the responsibility of the state alone. It is the responsibility of every citizen and thus a spirit of partnership is to be realized through the environment management of the country. The process of environmental audit was formalized by Supreme Audit Institution (SAI) according to the guidelines given in Manual of Standard Orders (MSO) issued by Authority of the Controller and Auditor General of India 2002. By realizing the need of responsibility towards environment, NAAC, an autonomous body under UGC has added the concept of environmental audit in accreditation methodologies of universities and colleges.

2.1. Aims and objectives of Environmental Audit in Academic Institutes

To nurture environmentally friendly management in academic institutions some of the prominent objectives are:

- To recognize the initiatives taken by organization towards environment
- To secure the environment and cut down the threats posed to human health.
- To recognize, diagnose and resolve the environmental problems.

- To assess environmental performance and the effectiveness of the measures to achieve the defined objectives and targets.

Keeping the importance of environmental management, a detail environmental audit was carried out at Sri Ramakrishna Dental College and Hospital, Coimbatore, covering the major areas of water management, energy conservation, solid waste management and green campus.

3. ABOUT THE INSTITUTION

Sri Ramakrishna Dental College and Hospital (SRDCH), Coimbatore, established in the year 2011 by SNR Sons Charitable Trust is one of the 17 institutions managed by the trust. Sri Ramakrishna Dental College and Hospital has a quality policy and it implements quality systems to become a world class institution. The annual intake of students in the institution was initially 60 for UG course and since 2011 it's increased to 100 students for UG course. By 2009 the college was affiliated to have intake of MDS students in 5 clinical specialties. Sri Ramakrishna dental college and hospital is spread over 5.09 acres of land with easy access to both girls and boys' hostel within the main campus limit. It is a home for approximately 539 students. There are lot of facilities to supplement classroom teaching, library and labs. There are also small department level libraries within the institution which encourages and aids students in innovative thinking and to have better hand in clinical practice.

4. OBJECTIVE OF AUDIT

The aim of the environmental audit is to safe guard the environment and to conserve resources for sustainable development. The environmental audit was undertaken to show the areas of strengths and weaknesses, the extent of management practices available related to the environment, sustainable approaches to environmental problems in the campus and its environs, disposal of waste techniques, potential environmental management constraints and the focus of the future audits.

5. WATER AUDIT

A water audit is an on-site survey and assessment of water-using hardware, fixtures, equipment, landscaping, and management practices to determine the efficiency of water use and to develop recommendations for improving water-use efficiency. In simple words, a water audit is a systematic review of a site that identifies the quantities and characteristics of all the water uses. The site may vary from a public water utility, facility (institutional or commercial properties like malls, office, schools etc.) or a household. The overall objective of conducting a water audit is to identify opportunities to make system or building water use more efficient. Since water uses vary greatly from one type of business or institution to another and from site to site, therefore water audit is crucial to determine quantity, nature and quality of water consumption. Water audit for a water utility refers to tracking, assessing and validating all components of flow from the site of withdrawal or treatment through the water distribution system and into the consumer's properties.

The audit exercise provides decision making tools to the concerned people in the utility, institutions or households by identifying inefficient uses, problem areas wherein water conservation and remedial measures can be undertaken. Water auditing is an ongoing process and rarely stays consistent in a site or system over time. Therefore, in order to gauge progress from adopted water conservation and cutbacks, water audit should be performed on a regular basis. In addition, it provides convincing overview of the water use trends, effectiveness of conservation measures and potential cost and water savings. A detailed water audit was carried out in Sri Ramakrishna Dental College and Hospital, Coimbatore to measure and access the water usage, water losses in the system in order to find ways to optimize the use of the scarce resource for better water management.

5.1 METHODOLOGY

The key components in the water audit methodology undertaken in the institution included:

i. Pre-Audit Information

- Walk through the College premises to understand the nature of water uses and the systems installed in the campus.
- Discussion with the administrative officers and housekeeping employees on the various water uses during the day and the sources of water.
- Regular discussions with the administrative department were conducted throughout the exercise on current situation and the past trends in water

consumption, current sources, supply amount, source metering, distribution, storage, wastewater generation etc.

ii. Conducting a water audit

- Flow rate calculation from the taps and count of all water using fixtures/ equipment was undertaken.
- Collating records of water pumped to the overhead tanks, average borewell withdrawals, water bills etc. to estimate actual supply.
- The data collection and processing for personal water use including drinking, flushing and face/ handwashing, and other uses etc. was done on the basis of actual consumption.
- One litre bottle and 10 litres bucket method were used to estimate the flow rate from various taps used for a variety of purposes.

5.2 WATER SUPPLY

The primary source of water for the Campus is the municipal supplies, supplemented by the groundwater for drinking and sanitation purposes. The main source of potable/drinking water is the Siruvani water which is supplied by the Coimbatore Corporation. The potable water is stored in two underground sumps of capacity (31.5 KLD & 35.5 KLD) which is located near the main building. The underground water is sourced from one borewell located near Boy's hostel inside the campus. Groundwater is utilised for all the toilets and sanitation purposes. The depth of the bore well is 720 feet and is used for supplying water to all the toilets and for sanitation purpose in the campus. The average yield of the main borewell is about 4235 litres per hour, which was recorded using the 10 litres bucket test. The potable water supply details are recorded from the annual water consumption bills and the annual yield of the non-potable water is recorded from the pump usage data. A Reverse Osmosis Plant is also functional and is used to treat the hard water from the borewell and is then supplied for domestic usage. The RO unit is also being serviced and maintained at regular periods. The water consumption details are presented in Table 1.



Fig.1. Flow rate calculation by bucket method

Table 1. Overhead Reservoirs in the Campus

S.No	Location	Potable Water		Ground Water	
		Quantity	Capacity (KLD)	Quantity	Capacity (KLD)
1.	Hostel	1	1	1	28.6
2.	Kitchen	1	2		
Average Water Supply (KLD)			1.8 KLD	7.3 KLD	



Fig.2. Reverse Osmosis Unit

5.2.1 Calculation of water consumption pattern

The water consumption data was arrived from the actual survey and the results obtained from questionnaire survey regarding the frequency of water usage in toilets. The Permanent population (faculty, students, staff and visitors) count is considered for the study. In addition to these, the frequency, duration, flow rate of the plumbing fixtures was used to

measure the actual water consumption. The water consumption data is presented in the table below.

Table 2. Annual average water consumption in the Campus

WATER CONSUMPTION	QUANTITY (Litres/day)
POTABLE WATER	
Drinking water usage	550
Water usage in canteen	230
Hostels	330
TOTAL	1660
NON-POTABLE WATER	
Toilets/Bath	4800
Urinals	560
Handwashing/Sinks	340
Cleaning/Mobbing	350
Washing and Cleaning in Canteen	210
Gardening	210
TOTAL	6470

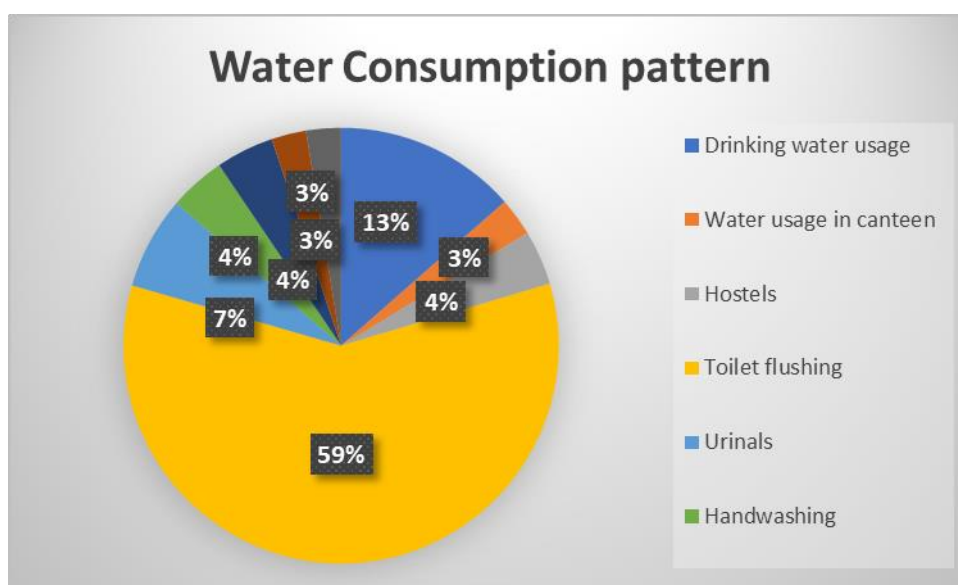


Fig.3. Water consumption pattern in the College

Table 3. Total Water Supply and Usage in the Campus

Item	Water use (in litres)	REMARKS
Average daily water supply, to the overhead tanks from the underground tank	7300	<ul style="list-style-type: none"> • Seasonal changes in frequency and usage • Rounding off errors and holidays count • Mixed use during current Covid situation.
Total calculated water consumption from the water audit	6470	
Difference between water consumption from overhead tanks and actual water use for various purposes	830	
Average daily water (Potable)supply	1800	-
Total calculated water consumption	1660	
Difference between water consumption and actual water use	140	

Table 4. Water quality Analysis

S.No	Parameters (mg/L)	Domestic Water	Raw water (Bore well)	Treated water (Borewell)	WHO International standard
1.	pH*	7.2	7.8	7.2	9.2
2.	TDS	216	3675	426	1500
3.	Total Alkalinity	135	590	275	500
4.	Total Hardness	135	720	285	500
5.	Na ⁺	135	1116	242	200
6.	K ⁺	35	38	16	200
7.	Ca ²⁺	3	88	46	200
8.	Mg ²⁺	26	123	41	150
9.	Cl ⁻	19	1560	337	600
10.	HCO ₃ ⁻	28	647	336	-
11.	CO ₃ ²⁻	165	54	12	-
12.	SO ₄ ²⁻	19.0	379	77	400
13.	F ⁻	0.4	1.2	0.6	1.5

*no units

5.3 PLUMBING FIXTURES

An exhaustive survey of the plumbing fixtures was carried out in the Campus and the complete data is presented in the Table (4) below. It should be noted that during the water audit conducted, minor leakages were identified in the taps and few fixtures were not in proper condition. After the preliminary audit, steps were taken to completely adopt water efficient fixtures inside the campus.

Table 5. Plumbing fixtures available in the Campus

USE AREA	LOCATION	TYPE OF FIXTURE	NO. OF UNITS	AVERAGE FLOW RATE (LPF)	MAX. FLOW RATE UPCV(LPF)
Dental Block Ground floor	Oral medicine	Sink Tap	3	3.6	6
	Oral Radiology	Sink Tap	2	4.8	6
	Clinical Lab	WB Tap	2	3.4	6
		Sink Tap	2	3	6
	Surgery PG	Sink Tap	3	5.3	6
	Surgery UG	Sink Tap	3	3.3	6
	Staff Clinic	Sink Tap	6	5.5	6
	Periodontics UG	Sink Tap	6	5.2	6
	Periodontics PG	Sink Tap	1	5.6	6
		WB Tap	10	4.5	6
	Pedodontics	Sink Tap	4	5.2	6
		WB Tap	1	4.2	6
	Canteen	Sink Tap	4	4	6
	Drinking water	Tap	4	4	6
	Cabins	Sink Tap	1	4.8	6
		WB Tap	4	4.5	6
	Feeding room	Tap	1	5.2	6
	Ladies toilet	IWC	6	5.5	6
		EWC	1	3.4	6
		Tap	13	4.5	6
	Gents Toilet	IWC	3	8	6
		EWC	4	5.4	6
		Tap	29	5.6	6
		Urinals	9	5	4
Campus Outside area		Tap	11	5.6	6
Dental Block First floor	Pre-clinical lab	WB Tap	1	5	6
	Comprehensive clinic	Sink Tap	3	5	6
	IQAC Cell	WB Tap	1	5.5	6
	General Surgery	Sink Tap	24	6	6
	Surgery PG	WB Tap	4	4.5	6
	CSSD	Sink Tap	1	4.6	6
		WB Tap	1	4.4	6
	Seminar -Surgery	WB Tap	1	5	6
	Anatomy	Sink Tap	1	4.5	6
		Tap	2	4	6
	Bio-chemistry	Sink Tap	32	5.2	6
	CD Pre-clinical lab	Sink Tap	1	5.6	6
	Service Dept	WB Tap	1	5.5	6
	Oral P microbiology	Sink Tap	4	4.5	6

		Sink Tap	26	5.6	6
	Anatomy	Sink Tap	32	5.2	6
	Physiology	Sink Tap	6	5.2	6
	Ladies toilet	IWC	7	4.5	6
		EWC	1	4.4	6
		Tap	15	5.5	6
	Gents Toilet	IWC	2	4.5	6
		EWC	4	4	6
		Tap	21	5.2	6
		Urinals	9	3.6	4
	Drinking water	Tap	2	5.5	6
Dental Block Second floor	Ortho PG	WB Tap	16	4.5	6
	Ortho UG	Sink Tap	8	5.6	6
	Conservative UG	Sink Tap	5	5.2	6
	Conservative PG	Sink Tap	10	5.2	6
	Prostho Ceramic Lab	Tap	4	4.5	6
	Prostho Implant Clinic	Tap	13	4	6
	Seminar Hall	Tap	9	4.8	6
	Drinking water	Tap	4	4.5	6
	Prothodontics M Lab	Tap	5	6.4	6
		Geyser	1	3.5	
	Prostho UG	Tap	4	4.5	6
		Geyser	1	4	
	Prostho PG	Tap	3	5.2	6
	Prostho Dental Lab	Tap	3	5.6	6
	Library	Tap	1	5.5	6
	Common room	Tap	2	4.5	6
	Public health Dentistry	Tap	3	4	6
	Ladies toilet	EWC	8	4.8	6
		Tap	22	4.5	6
	Gents Toilet	EWC	4	6.4	6
		Tap	23	4.5	6
		Urinal	9	4	4
Ladies Hostel	Office Toilet	EWC	2	5.2	6
		IWC	10	5.6	6
		Tap	18	5.5	6
		WB Tap	2	4.5	6
		Sink Tap	3	4	6
	First floor	IWC	12	4.8	6
		Tap	24	4.5	6
		Hotwater tap	1	4	6
		Sink Tap	4	5.2	6
	Second floor	IWC	12	5.6	6
		Tap	24	5.5	6

		Sink Tap	3	4.5	6
		Drinking tap	1	3.6	6
		Hotwater tap	1	3.5	6
	Third floor	EWC	29	4	6
		Hotwater tap	29	4.5	6
		Tap	58	4.4	6
		WB Tap	29	5.5	6
	Handwash	Drinking tap	1	3.5	6
	Kitchen & Outer	Drinking tap	7	3.4	6
		Drinking tap	5	3.4	6
Dental Block Third floor	Ladies' toilet	EWC	8	4.5	6
		Tap	22	5.2	6
	Gents Toilet	EWC	4	5.5	6
		Tap	22	3.4	6
		Urinal	8	3.5	4
Boys Hostel	Ground Floor	EWC	1	8	6
		IWC	0	5.4	6
		Tap	7	5.6	6
		WB Tap	2	5	6
		Hot water tap	1	3.6	6
		Drinking tap	1	3.4	6
	First floor	IWC	4	5	6
		EWC	5	5.5	6
		Tap	24	6	6
		Hot water tap	6	3.5	6
		Sink Tap	9	4.6	6
		IWC	5	4.4	6
	Second floor	Tap	10	5	6
		Sink Tap	4	4.5	6
		Hot water tap	1	4	6
	Third floor	IWC	5	5.2	6
		Hot water tap	1	3.6	6
		Tap	10	5.5	6
		WB Tap	5	4.5	6
	Headroom	Tap	1	5.6	6
Quarters		EWC	24	5.2	6
		Hot water tap	24	3.4	6
		Tap	72	5.5	6
		WB Tap	24	4.5	6
		Sink Tap	12	5.6	6
		Geyser	12	3.6	

Table 6. Water efficient Fixtures available in the Campus

S.No	Fixture Type	Total quantity available	Average Flow rate/ consumption
1.	Water closets (IWC)	54	4.5 LPF
2.	Water closets (EWC)	107	4 LPF
3.	Urinals	35	3.5 LPF
4.	Taps (Wash basins) & Sinks	635	4.3 LPF

Note: The capacity of the cisterns in the toilet was ascertained by the make of the cisterns. For the cisterns whose details are unknown, an exercise of measuring the drop in the water level after a single flush was carried out and flow rate is arrived at. To arrive at total water use from the taps, flow rate was computed using the one litre bottle test by recording the time taken to fill the bottle, which was then used to compute flow at litres per minute.



Fig.4. Water efficient fixtures

5.4 RAINWATER HARVESTING & WASTEWATER RECYCLING SYSTEM

The Institution has a well-designed system for treating the wastewater generated in the campus. The STP is available SNR Ground area adjacent to the campus area. The wastewater recycling system has been designed to treat 1.5 million litres per day of wastewater from all the toilets and wash areas inside the campus. The components involved in treatment are: a settler, a baffled reactor, aeration tank and a polishing pond. The treated wastewater is stored in the polishing pond and in an underground sump. This water is reused for irrigation and recharge purposes. Rainwater harvesting system has been proposed to be commissioned immediately inside the campus. Moreover, major areas within the campus are left unpaved to enable groundwater recharge through infiltration.



Fig. 5. Sewage Treatment Plant in the Campus



Fig. 6. Treated water reused for gardening

5.5 RECOMMENDATIONS:

- Flow measurement devices may be installed and maintained at all strategic points so that water losses from various components such as raw water source, conveyance system from raw water source to treatment plant, from treatment plant to treated water storage system, treated water storage system to distribution networks, individual users, etc. could be assessed at regular intervals.
- Rainwater harvesting system in existing establishment should be strengthened.
- High priority areas of water conservation have high scope for water conservation by using smart water meters to control overflow and leakages etc.,

6. WASTE AUDIT

A comprehensive waste audit was conducted in Sri Ramakrishna Dental College and Hospital, Coimbatore to identify, quantify and analyze the composition of the waste stream to ensure ways to improve sustainable practices.

The main objectives of the waste audit are:

- To identify the amount, nature and composition of the waste generated in designated functional areas of the campus.
- To understand the process of waste management and the extent of recycling.
- To suggest opportunities for reuse and recycle as well as to enhance and strengthen the existing recycling initiatives currently in place.

6.1. WASTE AUDIT METHODOLOGY

Dental college and Hospitals generate a number of biomedical wastes, including the materials such as scrap amalgam, photochemical waste (developer and fixer), lead foil from traditional X-ray packets, blood-soaked materials, human tissue, and disinfectants, which are challenging to the environment, apart from the general solid wastes. Wise handling and disposing them is critical. Sound management of biomedical waste is thus a crucial component of environmental health protection. The purpose of this audit is to find the types of biomedical waste produced in the campus, evaluate the waste management practices and to create awareness among the dental profession, regarding minimizing the production of biomedical waste and to encourage the best management practices, while disposing hazardous wastes.

General Waste

The institution follows the 3R's Reduce, Reuse and Recycle for the management of waste within the campus. The institution aims to extract the maximum practical benefits from waste products and to generate comparatively a minimal amount of waste. Waste management includes storage, collection, transport, handling, recycling, disposal and monitoring of waste management. Studies were carried to assess the composition of the waste generated in the Campus. The campus follows a good solid waste collection strategy, wherein the decomposable wastes are sorted out separately from the source of generation itself. The garbage generated in the campus is collected by the Waste management division of

Coimbatore City Corporation. The wet waste from the canteen and the hostel region is collected by a private waste handling operator ND Logistics Private Ltd, Coimbatore on a daily basis. Electrical incinerators are also available in the ladies' hostel for the safe disposal of the sanitary pad in a hygienic manner.

Bio-medical waste

The management has signed an agreement with M/s. Tecknotherm Industries, which is a common bio-waste treatment facility, functioning at Coimbatore. The biomedical waste generated during the diagnosis, treatment, immunization, and laboratory procedures are segregated and collected in appropriate Colour coded containers.

Segregation

The "key for waste management" is waste segregation. Only a segregation system can ensure that the waste will be treated according to the hazards of the waste and that the correct disposal routes are taken, and the correct transportation equipment will be used. Recycling can be only carried out if recyclable materials are separated from the hazardous waste. Contaminated materials are excluded from any recycling activity, and they must be treated as mixed hazardous waste. Without effective segregation system, a complete waste stream must be considered as hazardous. Segregated waste should not be mixed during transport and storage. If hazardous and non-hazardous wastes are mixed, the entire mixture must be considered and treated as hazardous waste. Only a segregation system can ensure that the waste will be treated according to the hazards of the waste and that the disposal routes are taken. The different categories of wastes generated from various places inside the campus is properly segregated at the source of generation.

Colour coding

Colour coding means to combine different waste groups with "similar hazards in one main group" in a fast and easy way by a fixed colour. The different waste groups have different colours for the containers/bags for the identification according to the hazards and applied throughout the complete disposal chain, that is, segregation, collection, storage, transport, and disposal. All the bio-medical wastes are segregated into four categories as shown (Fig.7) in various designated places inside the campus (Fig.8) and finally collected by the agency on a regular basis.



Oral Surgery-UG



Oral Surgery-PG



Oral Medicine



Pedodontics



Periododontics



Orthodontics



Prosthodontics



Conservative Endodontics

Fig.7. Waste Segregation in various departments



Bio-degradable



Bio-waste



Non Bio-degradable



Fig.8. Waste disposal Area

Other Hazardous wastes

Lead-containing Wastes inside X-ray packets and lead aprons contain leachable toxin is properly collected and sent as scrap to a private agency on a regular basis.

6.2 Recommendations

Departments can purchase alternatives to common plastic products, such as biodegradable cups, biodegradable toothbrushes, microbead-free toothpaste, washable cloth patient bibs, washable cloth headrest covers, and sterilizable metal suction tips. To reduce lead and silver waste, offices should consider digital imaging, as digital images have been found equal in quality to x-ray films. The usage of Paper, cardboard, aluminum, plastics, etc., should be minimized. The need of the day is to sensitize the dentists and students to the various types of waste, their generation, segregation, collection, transportation, and final disposal, for improved waste management practices. Though separate bins were available for bio-medical waste, all the students should be aware of the types of wastes produced from all other departments and their appropriate segregation according to the Bio-medical waste handling rules. Information and awareness should be created by displaying posters on the information Board in every building and frequently updated to encourage and engage employee and student participation.



Fig.9. Sanitary incinerators in Ladies toilets

7. AIR QUALITY AND NOISE AUDIT

The campus is located in Coimbatore District in Tamilnadu, at 405 m above sea level and located at 11.00° N 76.95° E. The climate is Tropical in nature and temperature varies from 18.8° C in January and highest 35° C in April. This indicates that, the coldest month during winter is December and hottest month during summer is April. The quality of air inside the campus is satisfactory.

Table 7. Air Quality Data in the Campus

S.No	Parameters	Value/Concentration
1.	Temperature	33.4°
2.	Humidity	50.6 %
3.	Precipitation	3.6 %
4.	Windspeed	3 km/hr
5.	CO2	215 ppm
6.	PM 10	43 micro gm/m ³
7.	PM 2.5	12 micro gm/m ³

The campus site is bounded to the North and East by residential, commercial properties, to the South by Nava India Road, to the West by the SNR College road with various shops, restaurants, hawkers etc., The Campus has a huge gate and a high compound wall which acts as a barricade to mitigate ‘noise’ inside the campus zone. Moreover, many numbers of trees are available in the boundary area which again controls the noise as well as acting as an oxygen park. During the study, the measurements of noise inside and outside College is well below the permissible limits. The indoors are properly ventilated and sufficient daylighting is available inside all the areas. Indoor plantation is also done which plays a major role in improving the air quality indoors.

Table 8. Noise Data in the Campus

S.No	Parameter	Value
1	Noise- Outdoor	55 dBA
2	Noise-Indoor	35 dBA

8. GREEN CAMPUS

Green plantation has been encouraged in the campus in order to reduce carbon foot print as well as GHG gases. The plants are selected to suit the soil and climatic conditions. Indigenous plants which help in building soil fertility and improve air quality are selected for the academic campus. Mostly native species are planted and are available in the campus. More than 30 varieties of trees and many species of garden plants are available which makes the campus pollution free and enhances the quality of air inside the premises. Measures for biodiversity conservation also highlighted and new trees are planted every year. This approves the efforts taken towards environment by the Institution.

Table 9. Species available inside the campus

Sl. No	Name of Trees/Plants	Count in numbers
OUTER RING		
1.	Azadirachta indica	12
2.	Phyllanthus emblica	8
3.	Royatonea regia	4
4.	Canarium album	3
5.	Mutingia calabura	2
6.	Tecoma stans	4
7.	Careya arborea	1
8.	Cissampelos pareira	1
9.	Casuarina equisetifolia	1
10.	Madhuca longifolia	1
11.	Magnifera indica	2
12.	Melia azedarach	1
13.	Punica granatum	2
14.	Millettia pinnata	9
15.	Epigaea repens	5
16.	Thespesia populnea	1
17.	Psidium guajava	2
18.	Citrus limon	1
19.	Ficus carica	1
20.	Mesua ferrea	1
21.	Cassia fistula	1
22.	Cocos nucifera	2
23.	Catharanthus roseus	7
24.	Jasminum multiflorum	2
25.	Annona reticulata	1
26.	Mimusops elengi	1
27.	Bombax ceiba	1
28.	Petroselinum crispum	2
29.	Santalum album	1
30.	Pysana Nyal	4
INNER RING		
1.	Pysana Nyal	49
TOTAL		133



Fig. 8. Maintenance of Green Campus

Note of appreciation:

The public lights within the campus are run with solar panels to reduce carbon foot prints and Solar water heaters are adopted in all the hostels.



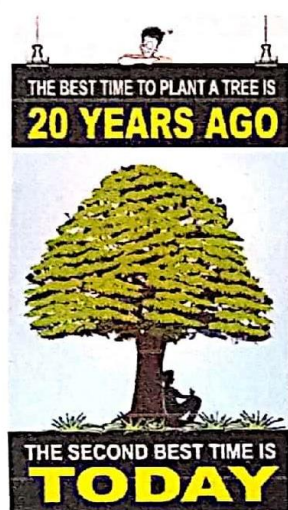
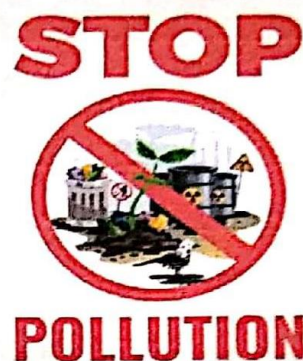
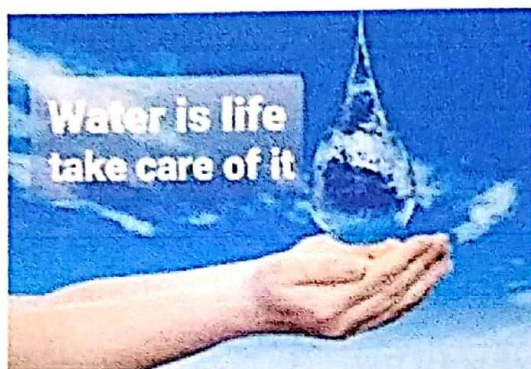
Fig.10. Solar Lamps inside the campus

9. FINAL RECOMMENDATIONS

- Green habitat concept should be adopted for all the building construction activities of the College in future, which may help a long way in reducing energy usage, increasing aesthetic appeal of the buildings and class rooms, besides reducing carbon foot print.
- Further, more green spaces should be established all around the campus around larger trees and shades for the benefit of the students.
- Vehicle pooling should be promoted among both students and faculty and use of bicycles can be promoted.
- Review periodically the list of trees planted in the garden, allot numbers to the trees and keep records. Assign scientific names to the trees.
- Environmental auditing may be conducted once in every two years.
- Promote environmental awareness as a part of course work in various curricular areas, independent research projects, and community service. Create awareness of environmental sustainability and take actions to ensure environmental sustainability.
- Establish a Campus Environmental Committee that will hold responsibility for the enactment, enforcement, and review of the Environmental Policy. The Environmental Committee shall be the source of advice and guidance to staff and students on how to implement this Policy.
- ‘No Smoking, No Tobacco’ in campus area: The dental college campus is completely smoking and tobacco free and use of these are a punishable offence. The display boards and various eye-opening posters and wallpapers are recommended to be displayed at various places in the college.



- Various boards for the awareness on the environment control, noise control, conservation of energy, recycling of resources, tree plantation and environmental policy of college are recommended to be displayed for all the stakeholders.



Dr. S. HEMA, M.E., Ph.D.,
EMS LEAD AUDITOR - ISO 14001-2015
 IGBC Accredited Professional
 Associate Professor
 Department of Civil Engineering
 Sri Ramakrishna Engineering College
 Coimbatore - 641 022.

HEMA S
 Signature of Auditor

Dr.S.HEMA, M.E., Ph.D (Envi.Engg).,
 ISO 14001 LEAD AUDITOR &
 IGBC ACCREDITED PROFESSIONAL



SNR SONS CHARITABLE TRUST

(Medical & Educational Service)

395, SAROJINI NAIDU ROAD, SIDHAPUDUR, COIMBATORE - 641 044.
Phone : 4500000

TO COMPETENT AUTHORITY

This is to authorise that the Sewage Treatment Plant (STP) of 1.5 MLD capacity, of the SNR SONS CHARITABLE TRUST located in Sri Ramakrishna College of Arts and Science campus (SRCAS), Nava India, Coimbatore 641 006, is used by SRI RAMAKRISHNA DENTAL COLLEGE AND HOSPITAL (SRDCH). Sewage pipelines connect the SRDCH with SRCAS for efficient recycling of waste water. (The drawing is enclosed). The recycled water from the outlet of STP is used for the maintenance of greenery.

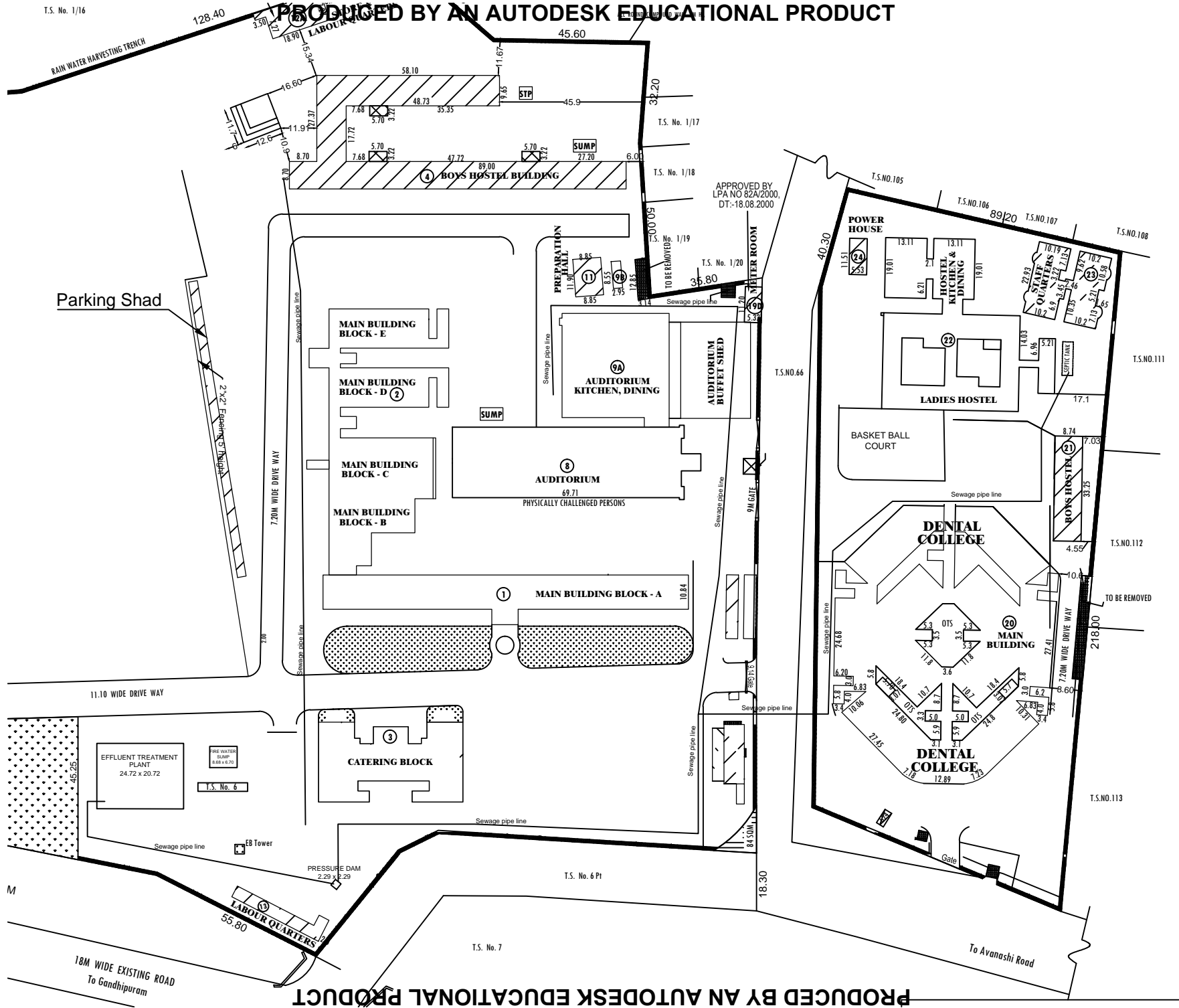
For SNR SONS CHARITABLE TRUST

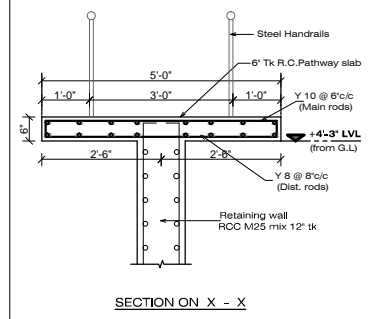
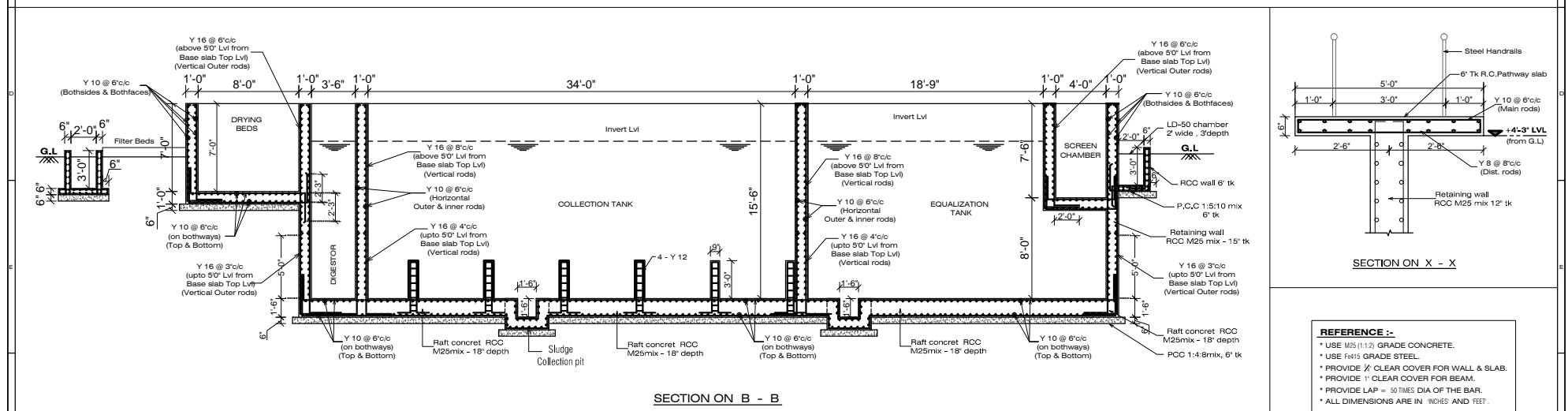
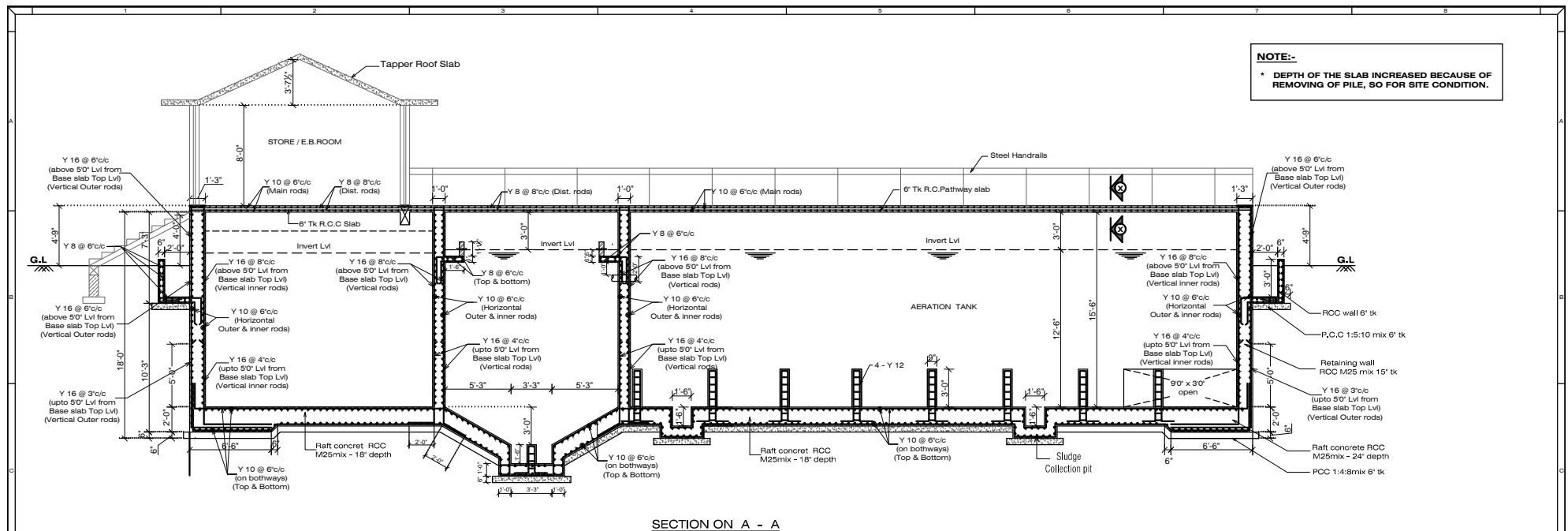
C.V. RAMKUMAR
CHIEF EXECUTIVE

Signature

Date: 10/10/2019

Place: Coimbatore





- REFERENCE :-**
- * USE M25 (1:1:2) GRADE CONCRETE.
 - * USE F415 GRADE STEEL.
 - * PROVIDE 1/2" CLEAR COVER FOR WALL & SLAB.
 - * PROVIDE 1" CLEAR COVER FOR BEAM.
 - * PROVIDE LAP = 50 TIMES DIA OF THE BAR.
 - * ALL DIMENSIONS ARE IN "INCHES" AND FEET.

PROJECT: SEWAGE TREATMENT PLANT					
CLIENT: M/S. SRI RAMAKRISHNA DENTAL COLLEGE @ COIMBATORE					
TITLE: REINFORCEMENT DETAILS		R1	07.02.14	M.Kalimuthu	DEPTH OF THE SLAB INCREASED BECAUSE OF REMOVING OF PILE, SO FOR SITE CONDITION
REV	DATE	REV BY	REVISIONS		

M. DHARMALINGAM ASSOCIATE
ARCHITECTS
6, SYRIAN CHURCH ROAD NO:1, COIMBATORE - 641001
PH: 0422-2470469, 0422-2476469, FAX: 0422-2476469

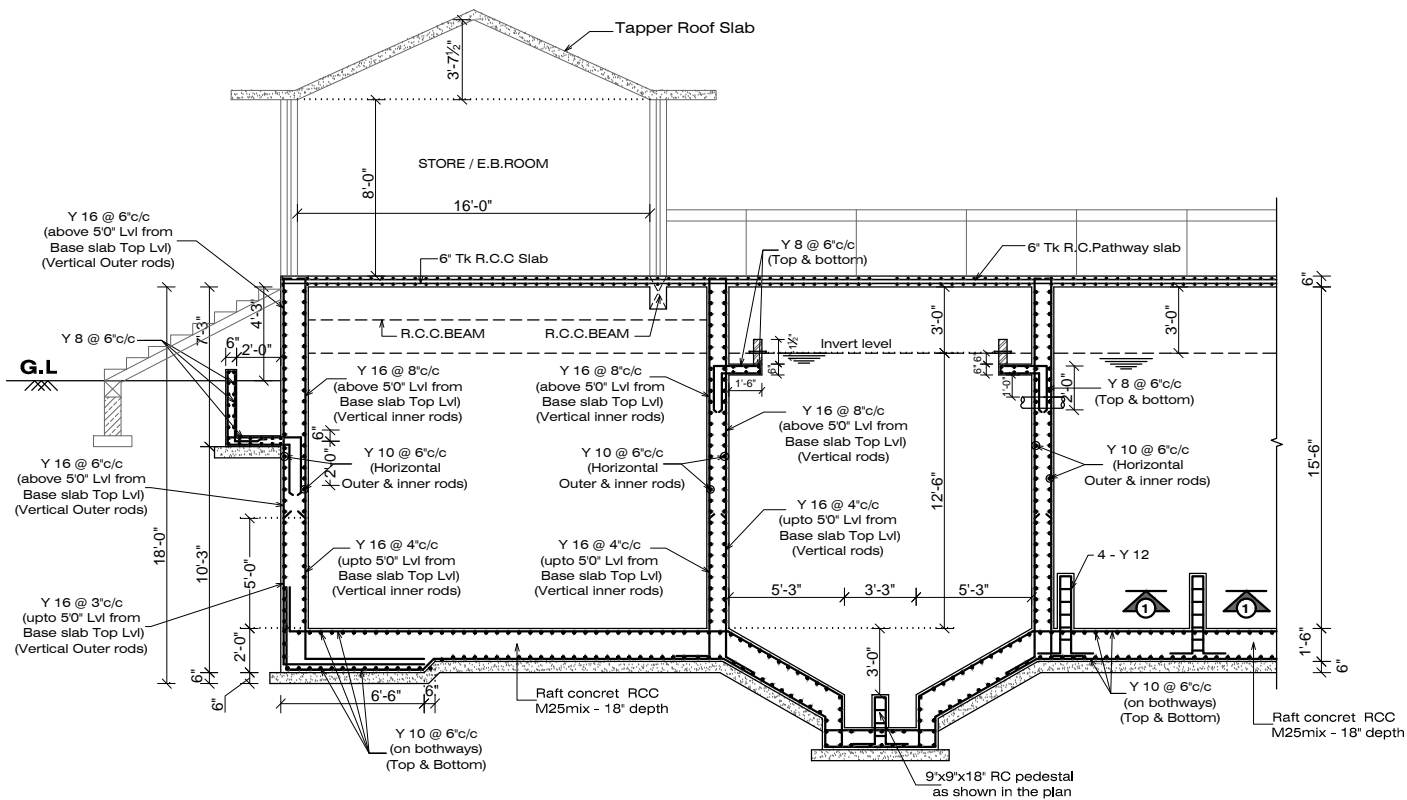
DATE: 23.01.14

SCALE: NTS

DRG.NO: 2012 - 1038 - STP - S1 - R1

DRAWN: M.Kalimuthu

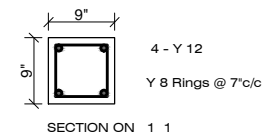
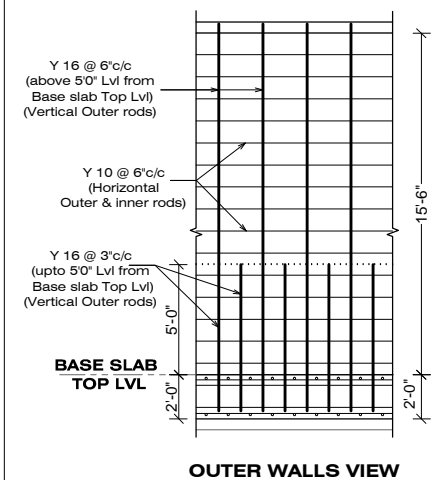
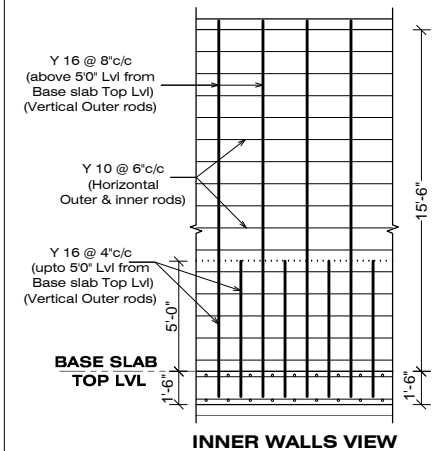
CHECKED:



SECTION ON A - A

NOTE:-

* DEPTH OF THE SLAB INCREASED BECAUSE OF REMOVING OF PILE, SO FOR SITE CONDITION.



PROJECT: **SEWAGE TREATMENT PLANT**

CLIENT: **M/s. SRI RAMAKRISHNA
DENTAL COLLEGE @ COIMBATORE**

TITLE: **REINFORCEMENT DETAILS**

REV	DATE	REV BY
R1	07.02.14	M.Kalimuthu

DEPTH OF THE SLAB INCREASED BECAUSE OF REMOVING OF PILE, SO FOR SITE CONDITION

REVISIONS



M. DHARMALINGAM ASSOCIATE

ARCHITECTS

6, SYRIAN CHURCH ROAD NO:1, COIMBATORE - 641001

PH: 0422-2470469, 0422-2476469, FAX: 0422-2476469

e-mail: darmalingam@gmail.com

DATE: 23.01.2014

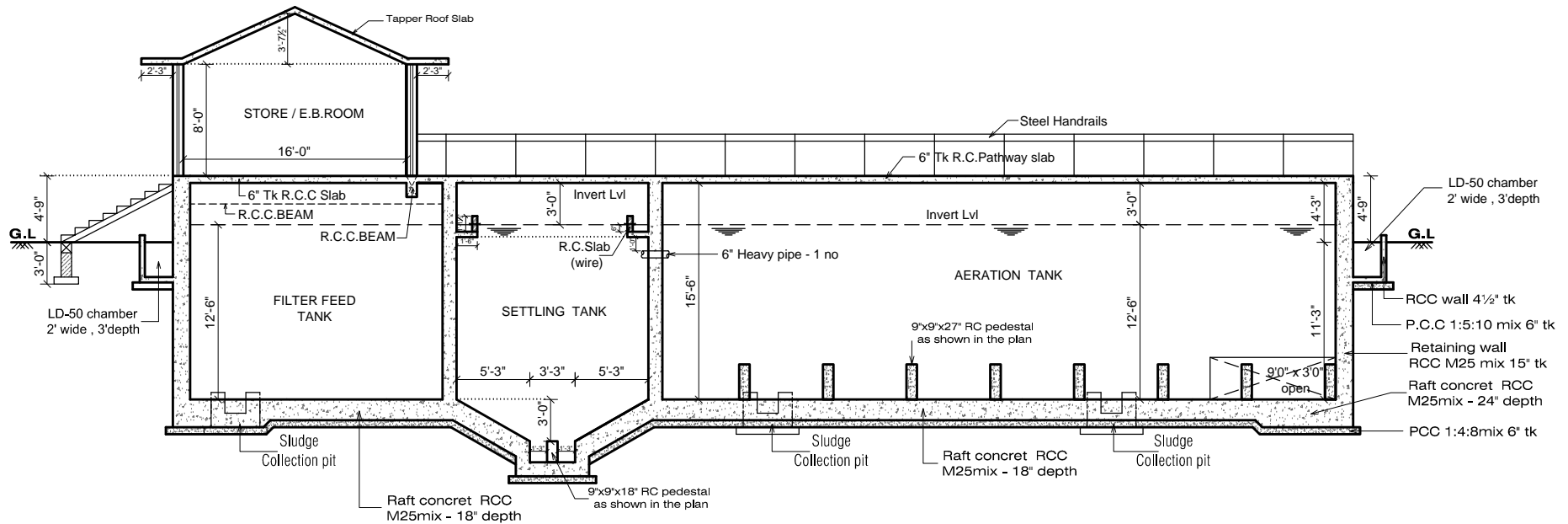
DRAWN: M.Kalimuthu

SCALE: NTS

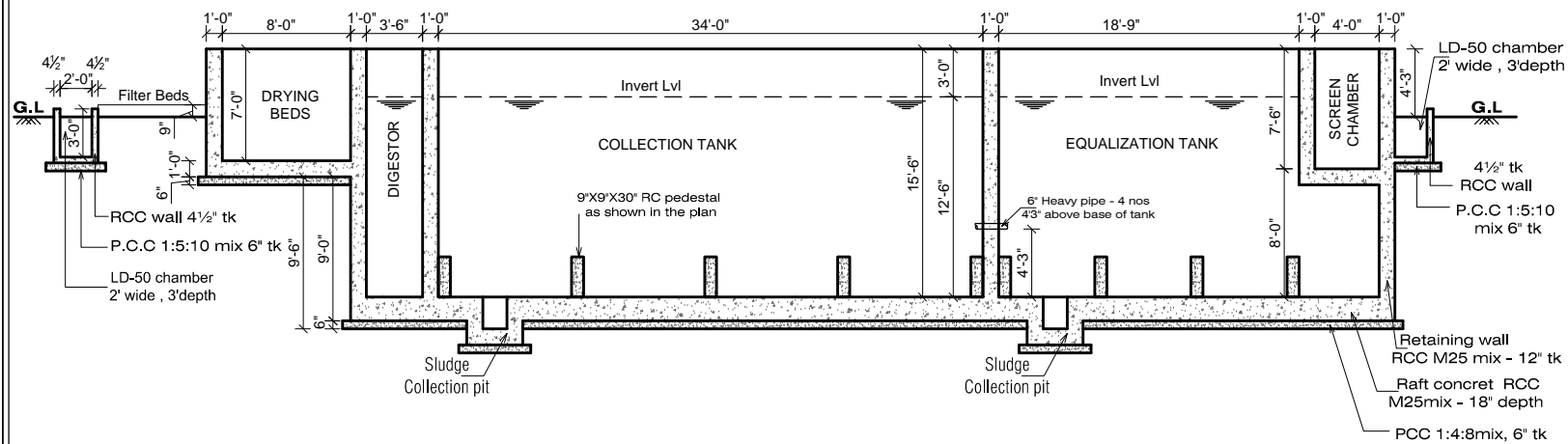
CHECKED:

DRG.NO:

2012 - 1038 - STP - S2 - R1



SECTION ON A - A



SECTION ON B - B

REV	DATE	DESCRIPTION
R1	07.02.14	DEPTH OF THE SLAB INCREASED BECAUSE OF REMOVING OF PILE, SO FOR SITE CONDITION
PROJECT: SEWAGE TREATMENT PLANT		
CLIENT: M/s. SRI RAMAKRISHNA DENTAL COLLEGE @ COIMBATORE		
TITLE: SECTION DETAILS		
DRAWN: H. Kalanidhi	DATE: 23.01.14	DRG. NO:
CHECKED:	SCALE: NTS	2012-1038-STP-A4-R1
M. DHARMALINGAM ASSOCIATE ARCHITECTS 6, SYRIAN CHURCH ROAD NO: 1, COIMBATORE - 641001 PH: 0422-2470489, 0422-2476489, FAX: 0422-2476489 e-mail: dharmalingam@gmail.com		

Date	kwh Reading	Consumed units	Total units	
2-2-17	117315	206	206	WS
3-2-17	117450	635	841	
8-2-17	118922	1022	1863	
9-2-17	119222	300	2163	WS
10-2-17	119392	170	2333	
13-2-17	120206	814	3147	
15-2-17	120809	603	3750	WS
16-2-17	121027	218	3968	
17-2-17	121923	296	4264	
20-2-17	122119	796	5060	
21-2-17	122332	213	5273	WS
22-2-17	122845	513	5786	
23-2-17	123671	226	6012	
1-3-17	124321	1250	7262	7262
March				
			+2	
8-3-17	126244	1923	1925	
10-3-17	126641	397	2322	
13-3-17	127419	778	3100	
14-3-17	127532	113	3213	
15-3-17	127847	315	3528	
18-3-17	128793	946	4474	
20-3-17	129391	598	5072	
24-3-17	129767	376	5448	
26-3-17	130059	202	5650	
28-3-17	131006	947	6597	
29-3-17	131316	310	6907	
31-3-17	131909	637	7544	
1-4-17	132082	199	7673	7673

April 17

1-4-17	132082		
2-4-17	133920	1838	1838
3-4-17	134169	249	2087
12-4-17	134460	291	2378
14-4-17	134838	378	2756
15-4-17	135271	433	3189
17-4-17	135879	608	3797
18-4-17	136135	256	4053
20-4-17	136686	551	4604
21-4-17	136946	260	4864
24-4-17	137726	790	5654
26-4-17	138256	520	6174
28-4-17	138777	521	6695
29-4-17	139042	265	6960
1-5-17	139362	321	7321
			<u>7321</u>

May 17

2-5-17	139684	271	271
10-5-17	140699	1065	1336
11-5-17	140962	263	1599
12-5-17	141175	213	1812
13-5-17	141396	221	2033
15-5-17	141864	468	2501
16-5-17	142093	229	2730
18-5-17	142572	479	3209
19-5-17	143034	462	3671
31-6-17	143346	312	3983
	158572		

	143346		
13.6.17	144220	874	874
15.6.17	144706	486	1360
18.6.17	145300	594	1954
20.6.17	146133	833	2787
25.6.17	146529	396	3183
28.6.17	147133	604	3787
29.6.17	147350	217	4004
3.7.17	148247	897	897
8.7.17	149498	1251	2148
12.7.17	150572	1074	3222
14.7.17	151006	434	3656
17.7.17	151447	441	4097
21.7.17	151716	269	4366
24.7.17	152115	399	4765
26.7.17	152575	460	5225
28.7.17	153050	475	5700 <u>5700 wh</u>
2.8.17	154396	246	346
4.8.17	154613	217	563
9.8.17	155811	1198	1767
11.8.17	156337	522	2283
13.8.17	156791	458	2741
19.8.17	158161	1370	4111
22.8.17	158897	736	4847
24.8.17	159352	455	5302
26.8.17	159565	213	5515
28.8.17	160049	484	5999
30.8.17	160482	433	6432
31.8.17	160970	488	6920

September '17

527

	160990			
5.9.17	161650	680	680	
6.9.17	161910	260	940	
18.9.17	164316	2406	3846	3836
29.9.17	164806	490	3836	
3.10.17	165317	511	511	
16.10.17	168287	2970	3481	
17.10.17	168518	231	3712	
19.10.17	168792	274	3986	
20.10.17	169002	210	4196	
22.10.17	169453	451	4647	
1.11.17	171438	1985	6632	6632
6.11.17	172511	1073	1073	
7.11.17	172728	217	1290	260.11.17
14.11.17	174279	1551	2841	1.00pm
26.11.17	176411	2132	4973	Jaconvy line
				sketch from CBR
				to SECAS - C. block
				same
28.11.17	177005	594	594	
29.11.17	177202	197	797	
1.12.17	177788	586	1377	
6.12.17	178891	103	2480	
7.12.17	179071	186	2666	
8.12.17	179154	79	2743	
12.12.17	179321	167	2910	
16.12.17	179901	580	3490	
17.12.17	180035	134	3624	
17.12.17	180244	206	3830	

	221		3830	
21.12.17	180467	226	4056	
23.12.17	180814	347	4403	5544, a vats,
20.12.17	181642	828	5231	
	181955	313	5544	
<hr/>				
4.1.18	182914	259	259	
6.1.18	182622	408	667	
8.1.18	183110	488	1155	
11.1.18	183922	812	1967	
14.1.18	185837	1815	3782	
30.1.18	188232	2495	6277	
1.2.18	189089	857	7124	7134 vats
<hr/>				
6.2.18	190076	987	987	
12.2.18	191258	1182	2169	
13.2.18	191494	236	2403	
14.2.18	191691	197	2600	
15.2.18	191901	230	2880	
16.2.18	192197	266	3096	
17.2.18	192431	234	3330	
19.2.18	192797	366	3696	
24.2.18	193331	534	4230	
22.2.18	193579	248	4478	
23.2.18	193818	239	4717	
25.2.18	194071	253	4970	
26.2.18	194331	260	5230	
27.2.18	194665	334	5564	6216
28.2.18	194958	293	5857	
1.3.18	195017	359	6216	
<hr/>				
2.3.18	195602	305	305	

	195319			
2.3.18	195622	305	305	
5.3.18	196367	745	1050	
7.3.18	196857	490	1540	
8.3.18	197058	201	1741	
9.3.18	197300	242	1983	
12.3.18	197984	684	2667	
13.3.18	198239	255	2922	
14.3.18	198497	258	3180	
15.3.18	198745	248	3428	
16.3.18	198998	247	3675	
17.3.18	199250	258	3933	
18.3.18	199465	215	4148	
21.3.18	199935	470	4618	
22.3.18	200210	275	5093	
23.3.18	200471	261	5354	
24.3.18	200714	248	5597	
26.3.18	201247	533	6130	
27.3.18	201473	226	6356	
28.3.18	201731	258	6614	7942 wty
29.3.18	201997	260	6880	
30.3.18	202263	266	7246	
31.3.18	202508	245	7491	
2.4.18	202959	452	7942	
4.4.18	203100	441	441	
5.4.18	203672	272	713	
6.4.18	203909	237	950	
1.4.18	204171	262	1212	
1.4.18	204633	462	1674	
11.4.18	205155	522	2196	
11.4.18	205416	259	2255	
14.18	205701	287	2542	

	205201		2542	
16.4.18	206445	744	3286	
17.4.18	206688	243	3529	
18.4.18	206959	271	3800	
20.4.18	207521	562	4362	
21.4.18	207761	240	4602	
22.4.18	207980	219	4821	
23.4.18	208248	268	5089	
25.4.18	208823	575	5664	
26.4.18	209103	280	5944	
27.4.18	209322	219	6163	
28.4.18	209677	355	6518	
29.4.18	209955	278	6796	
30.4.18	210170	215	7011	
1-5.18	210478	308	7319	7319
2.5.18	210679	201	201	
3.5.18	210911	232	433	
4.5.18	211424	513	946	
6.5.18	211657	233	1179	
8.5.18	212156	499	1678	
9.5.18	212388	232	1920	
11.5.18	212800	412	2332	
12.5.18	213058	258	2590	
14.5.18	213485	427	3017	
15.5.18	213754	269	3286	
16.5.18	214021	267	3553	
17.5.18	214261	240	3793	
18.5.18	214509	248	4041	
19.5.18	214751	242	4283	
10.5.18	215007	256	4539	

	007		4539	
21.5-18	215021	14	4553	
22.5-18	215146	125	4678	
24.5-18	215748	602	5280	
26.5-18	215987	239	5519	
27.5-18	216221	234	5753	
28.5-18	216425	204	5957	
29.5-18	216678	253	6210	
30.5-18	216965	287	6499	
31.5-18	217236	278	6768	
2.5-18	217817	581	7349	7349

3.8-18	217888	671	71	
5.8-18	218069	181	252	
6.8-18	218346	277	529	
7.8-18	218540	194	723	
8.8-18	218687	147	870	
9.8-18	218728	41	911	
11.8-18	218843	115	1026	
12.8-18	219108	265	1291	
13.8-18	219171	63	1354	
14.8-18	219278	107	1461	
15.6-18	219473	195	1656	
16.6-18	219630	157	1813	
18.6-18	219857	227	2040	
19.6-18	220028	171	2211	
20.6-18	220320	292	2503	
2.6-18	220737	417	2920	
3.6-18	220959	222	3142	
4.6-18	221144	185	3327	
6.6-18	221340	196	3523	
7.6-18	221412	72	3595	

	221412		3595	
30.6.18	221968	556	4151	
3.7.18	222241	273	4424	<u>4424</u>
4.7.18	222427	186	186	
6.7.18	222851	424	610	
7.7.18	223132	281	891	
8.7.18	223386	254	1145	
9.7.18	223559	173	1318	
10.7.18	223825	266	1584	
12.7.18	223869	44	1628	
13.7.18	224234	365	1993	
16.7.18	224874	640	2633	
18.7.18	225324	450	3088	
19.7.18	225605	281	3364	
22.7.18	226321	716	4080	
23.7.18	226489	168	4248	
25.7.18	227067	518	4766	
29.7.18	228036	1029	5795	
1.8.18	228856	820	6615	<u>6615</u>
2.8.18	228950	94	94	
6.8.18	229331	381	475	
9.8.18	230421	1090	1565	
12.8.18	230649	228	1793	
15.8.18	230848	199	1992	
18.8.18	231431	583	2575	
10.8.18	231740	309	2884	
12.8.18	232260	520	3404	
13.8.18	232500	240	3644	

	2500		3644	
24.8.18	232736	236	3880	
27.8.18	233464	728	4608	
28.8.18	233689	225	4833	
29.8.18	233960	271	5104	
30.8.18	234190	280	5334	
1.9.18	234610	480	5814	<u>5814</u>
<hr/>				
4.9.18	235208	538	538	
5.9.18	235462	254	792	
7.9.18	235713	311	1103	
8.9.18	326109	336	1439	
11.9.18	236483	274	1713	
13.9.18	236997	514	2227	
14.9.18	237225	228	2455	
15.9.18	237495	270	2725	
16.9.18	237838	343	3068	
17.9.18	238035	197	3265	
18.9.18	238333	298	3563	
20.9.18	238845	512	4075	
21.9.18	239126	281	4356	
22.9.18	239484	358	4714	
23.9.18	239873	389	5103	
24.9.18	240106	233	5326	
25.9.18	240327	221	5557	
26.9.18	240362	35	5592	
27.9.18	240715	353	5945	<u>6996</u>
28.9.18	240979	264	6209	
1.10.18	241766	787	6996	
<hr/>				
3.10.18	241862	96	96	
4.10.18	242166	304	400	
1.10.18	242436	270	670	

	436		670	
6.10.18	242666	230	900	
10.10.18	243597	931	1831	
11.10.18	243864	267	2098	
12.10.18	244115	251	2349	
12.10.18	244358	243	2592	
29.10.18	247808	3450	6042	
1.11.18	248497	689	6731	6731
5.11.18	249506	1009	1009	
15.11.18	251833	2327	3336	
16.11.18	252128	295	3631	
17.11.18	252368	240	3871	
20.11.18	252992	624	4495	
21.11.18	253274	282	4777	
22.11.18	253576	302	5079	
24.11.18	254086	510	5589	
25.11.18	254311	225	5814	
26.11.18	254568	257	6071	
27.11.18	254836	268	6339	
28.11.18	255701	865	7204	
1.12.18	256041	340	7544	7544
3.12.18	256603	562	562	
6.12.18	256887	284	846	
6.12.18	257387	500	1346	
7.12.18	258211	824	2170	
10.12.18	258468	257	2427	
11.12.18	258788	320	2747	

	8788		2747	
17-12-18	259954	1166	3913	
18-12-18	260210	256	4169	
19-12-18	260219	009	4178	
20-12-18	260363	44	4222	
21-12-18	260666	303	4525	STB
22-12-18	260965	299	4824	Dec-18
1-1-19	263708	2743	7567	7567

2-1-19	265319	1611	1611	
3-1-19	265565	246	1857	
4-1-19	265859	274	2151	
5-1-19	266152	243	2444	
6-1-19	266407	215	2699	
7-1-19	266729	322	3521	
8-1-19	267488	799	3780	
9-1-19	267541	16	4138	
10-1-19	267516	710	4888	
11-1-19	268716	310	5208	
12-1-19	268967	251	5459	
13-1-19	269265	298	5757	
14-1-19	269707	442	6199	
15-1-19	270441	734	6938	
16-1-19	270725	284	7217	7217

17-1-19	272235	1510	1510	
18-1-19	272884	649	2159	
19-1-19	2741648	1764	3923	
20-1-19	274947	299	4222	
21-1-19	276639	1692	5914	
22-1-19	277194	555	6469	
23-1-19	277501	257		

	501		6776	
23.2.19	277770	269	7045	
27.2.19	279077	1307	8352	
28.2.19	279398	322	8674	8951
1.3.19	279675	277	8951	
2.3.19	279925	250	250	
3.3.19	280248	323	573	
4.3.19	280510	262	835	
5.3.19	280774	264	1099	
6.3.19	281125	351	1450	
7.3.19	281409	284	1734	
8.3.19	281732	323	2057	
9.3.19	282009	277	2334	
10.3.19	282321	312	2646	
11.3.19	282554	233	2879	
14.3.19	283508	1054	3938	
15.3.19	283801	393	4326	
16.3.19	284105	304	4630	
17.3.19	284390	295	4925	
18.3.19	284637	249	5172	
19.3.19	284930	273	5445	
20.3.19	285542	612	6057	
22.3.19	285933	391	6428	
23.3.19	286234	301	6729	
25.3.19	286662	428	7157	
26.3.19	286891	229	7386	9105
27.3.19	287116	245	7631	
28.3.19	287438	322	7953	
30.3.19	287995	557	8510	
1.4.19	288590	595	9105	

	890			
2.4.19	288903	313	313	
3.4.19	289201	298	611	
4.4.19	289477	276	887	
5.4.19	289745	268	1155	
6.4.19	290068	328	1478	
8.4.19	290635	567	2045	
9.4.19	290943	308	2353	
10.4.19	291213	290	2623	
11.4.19	291461	248	2871	296326
12.4.19	291788	327	3198	288570
15.4.19	292260	472	3670	7736
16.4.19	292577	317	3987	
18.4.19	293172	595	4582	
19.4.19	293876	204	4786	
21.4.19	293827	451	5237	
22.4.19	294050	223	5460	
23.4.19	294366	316	5776	
24.4.19	294626	260	6036	
25.4.19	294889	263	6299	
26.4.19	295123	236	6535	
27.4.19	295360	237	6772	
28.4.19	295613	253	7025	
29.4.19	295819	206	7231	
30.4.19	296068	249	7480	
1.5.19	296326	258	7638	

April 19

STP units

2.5.19	296543	217	217	7738
3.5.19	296809	266	483	
4.5.19	297060	251	734	
6.5.19	297489	429	1163	
8.5.19	298081	592	1755	
11.5.19				

	8081		1755	
10.5.19	298595	514	2269	
11.5.19	298846	251	2520	
12.5.19	299174	328	2743	
13.5.19	299386	212	2955	
14.5.19	299640	254	3209	
15.5.19	299893	253	3462	
16.5.19	300113	220	3682	
17.5.19	300387	274	3956	
18.5.19	300620	233	4189	
19.5.19	300907	287	4476	
20.5.19	301162	255	4731	
21.5.19	301435	273	5004	
22.5.19	301959	524	5528	
24.5.19	302264	205	5733	
25.5.19	302311	52	5785	
26.5.19	302514	198	5983	
27.5.19	302855	361	6324	
28.5.19	303145	290	6564	
29.5.19	303401	256	6820	STP Consumption
30.5.19	303627	226	7046	vals
1.6.19	304119	492	7538	7538
2.6.19	304405	286	286 826	
3.6.19	304648	243	529	
4.6.19	304890	242	771	
7.6.19	305604	714	1485	
8.6.19	305884	280	1765	
16.6.19	306104	220	1985	
16.6.19	306311	207	2192	
16.6.19	306597	286	2478	
16.6.19	306827	230	2708	
16.6.19	307110	283	2991	
16.6.19	307576	466	3257	

	307576		3257	
17.6.19	308032	456	3713	
18.6.19	308233	201	3914	
22.6.19	309342	1109	5024	
23.6.19	309611	269	5292	
24.6.19	309722	112	5403	
25.6.19	310089	367	5770	
26.6.19	310401	312	6082	
27.6.19	310800	399	6481	
28.6.19	311066	266	6747	June 19
29.6.19	311307	241	6988	8TP units
1-7.19	311598	291	7279	7279
	?			
2.7.19	311765	167	167	
3.7.19	312032	267	434	
5.7.19	312574	542	976	
6.7.19	312817	243	1219	
8.7.19	313394	577	1796	
9.7.19	313582	188	1984	
10.7.19	313852	270	2254	
11.7.19	314147	295	2549	
12.7.19	314294	147	2696	
13.7.19	314638	344	3040	
15.7.19	315240	602	3649	
16.7.19	315505	265	3914	
17.7.19	315788	283	4197	
18.7.19	316068	280	4477	
19.7.19	316379	311	4788	
20.7.19	316615	236	5024	
21.7.19	316804	189	5213	
12.7.19	316935	131	5344	
13.7.19	317021	106	5450	
14.7.19	317092	71	5521	

	7092		5521	
25.7.19	317194	102	5623	
28.7.19	317411	217	5840	
29.7.19	317515	104	5944	July-19
30.7.19	317747	232	6176	STP units
31.7.19	318060	313	6489	
1.8.19	318332	272	6761	6761
2.8.19	318775	443	443	
3.8.19	319216	441	884	
4.8.19	319757	541	1435	
5.8.19	320124	367	1802	
6.8.19	320554	430	2239	
7.8.19	321004	450	2682	
8.8.19	321129	125	2807	
9.8.19	321405	276	3083	
10.8.19	321615	210	3293	
11.8.19	321874	259	3652	
12.8.19	322103	229	3881	
13.8.19	322405	302	4183	
14.8.19	322686	281	4464	
15.8.19	323050	564	5028	
16.8.19	323619	369	5397	
17.8.19	323903	284	5681	August-19
18.8.19	324182	279	5960	STP units
19.8.19	324423	241	6201	8284
20.8.19	324606	2083	8284	
21.8.19	326428	12	12	
22.8.19	327568	1148	1162	
23.8.19	328073	505	1667	
24.8.19	328352	279	1946	
25.8.19	328665	313	2259	

	665		2059
13.9.19	328772	113	2372
14.9.19	328909	131	2503
19.9.19	329624	115	3218

Day	Date	Pulo Yan	On-time	Am	To	Off-time	Am
FRI	11.5.18	2	9.00	Pm	To	12.00	Am
212823	>	1	12.00	Am	To	4.00	Am
213073	250	2	5.00	Am	To	8.00	Am
SAT	12.5.18	1	10.00	Pm	To	2.00	Am
213073	>	2	2.00	Am	To	5.00	Am
213287	214	1	5.00	Am	To	8.00	Am
SUN	13.5.18	2	9.30	Pm	To	1.00	Am
213287	>	1	1.00	Am	To	4.00	Am
213508	221	2	5.00	Am	To	8.00	Am
MON	14.5.18	2	8.40	Pm	To	12.00	Am
213508	>	1	12.00	Am	To	4.00	Am
213778	270	2	5.00	Am	To	8.00	Am
TUE	15.5.18	2	8.40	Pm	To	12.00	Am
213778	>	1	12.00	Am	To	4.00	Am
214046	268	2	5.00	Am	To	8.00	Am
WED	16.5.18	1	9.00	Pm	To	12.00	Am
214046	>	2	12.00	Am	To	4.00	Am
214274	228	1	5.00	Am	To	8.00	Am
THU	17.5.18	2	10.00	Pm	To	2.00	Am
214274	>	1	2.00	Am	To	5.00	Am
214503	229	2	5.00	Am	To	8.00	Am
FRI	18.5.18	1	9.00	Pm	To	12.00	Am
214503	>	2	12.00	Am	To	4.00	Am
214776	273	1	5.00	Am	To	8.00	Am
SAT	19.5.18	1	9.00	Pm	To	12.00	Am
214776	>	2	12.00	Am	To	3.00	Am
215005	229	1	3.00	Am	To	5.30	Am

DAY	DATE	Deployer	on time	Am	To	off time	Am
WED	23.5.18	2	8.00	Pm	To	12.00	Am
215005	506	1	4.00	Am	To	8.00	Am
215511							
THU	24.5.18	1	9.00	Pm	To	12.00	Am
215511	261	2	12.00	Am	To	3.00	Am
215772		1	4.00	Am	To	8.00	Am
FRI	25.5.18	1	10.00	Pm	To	2.00	Am
215772	226	2	2.00	Am	To	5.00	Am
215998		1	5.00	Am	To	8.00	Am
SAT	26.5.18	1	9.00	Pm	To	12.00	Am
215998	223	2	12.00	Am	To	3.00	Am
216221		1	3.00	Am	To	6.00	Am
SUN	27.5.18	2	8.40	Pm	To	12.00	Am
216221	231	1	12.00	Am	To	4.00	Am
216452		2	5.00	Am	To	8.00	Am
MON	28.5.18	2	9.00	Pm	To	12.00	Am
216452	246	1	12.00	Am	To	4.00	Am
216698		2	5.00	Am	To	8.00	Am
TUE	29.5.18	2	8.00	Pm	To	12.00	Am
216698	288	1	12.00	Am	To	4.00	Am
216981		2	6.00	Am	To	8.00	Am
WED	30.5.18	2	9.00	Pm	To	12.00	Am
216981	269	1	12.00	Am	To	4.00	Am
217250		2	5.00	Am	To	8.00	Am
THU	31.5.18	2	9.00	Pm	To	12.00	Am
217250	303	1	12.00	Am	To	4.00	Am
217553		2	6.00	Am	To	8.00	Am

DAY	DATE	PULOVER	ON-TIME	AM	TO	OFF-TIME	AM
FRI	1.6.18	1	8.45	PM	TO	12.00	PM
217553		2	12.00	AM	TO	4.00	AM
217827	274	1	4.00	AM	TO	7.30	AM
THU	14.6.18	2	10.00	AM	TO	1.00	PM
217827		1	1.00	PM	TO	4.00	PM
219437	1610	2	4.00	PM	TO	7.00	PM
FRI	15.6.18	2	9.00	AM	TO	12.00	PM
219437		1	12.00	PM	TO	4.00	PM
219610	173	2	4.00	PM	TO	5.30	PM
SAT	16.6.18	2	12.00	PM	TO	2.00	PM
219610		1	2.00	PM	TO	6.30	PM
219759	149						
MON	18.6.18	2	10.00	AM	TO	1.00	PM
219759		1	1.00	PM	TO	4.00	PM
220027	268	2	4.00	PM	TO	8.00	PM
TUE	19.6.18	2	9.30	AM	TO	11.30	AM
220027		1	12.00	PM	TO	2.30	PM
220245	272	2	2.30	PM	TO	6.00	PM
		1	6.00	PM	TO	8.00	PM
WED	20.6.18	1	9.00	AM	TO	12.00	PM
220245		2	12.00	PM	TO	3.00	PM
220477	232	1	4.00	PM	TO	8.00	PM
THU	21.6.18	2	9.00	AM	TO	12.00	PM
220477		1	12.00	PM	TO	3.00	PM
220709	232	2	3.00	PM	TO	6.00	PM
		1	6.00	PM	TO	8.00	PM

DAY	DATE	PULLEY	ORIGINAL	AM	TO	OFF	FROM	AM
FRI	22.6.18	2	10.00	Am	To	1.00	pm	
220709		1	2.00	Pm	To	6.00	Pm	
220958	249	2	6.00	Pm	To	8.30	Pm	
SAT	23.6.18	2	9.00	Am	To	12.00	Pm	
220958		1	12.00	Pm	To	3.00	Pm	
221142		2	4.30	Pm	To	6.30	Pm	
MON	25.6.18	1	9.00	Am	To	12.00	Pm	
221142		2	2.00	Pm	To	5.00	Pm	
221338	196	1	5.00	Pm	To	7.00	Pm	
TUE	26.6.18	2	10.00	Am	To	2.00	Pm	
WED	27.6.18	2	10.00	Am	To	2.00	Pm	
221338		1	2.00	Pm	To	5.00	Pm	
221584	246	2	5.00	Pm	To	7.30	Pm	
THU	28.6.18	2	9.00	Am	To	12.00	Am	
221584		1	2.00	Pm	To	7.30	Pm	
221762	178							
FRI	29.6.18	1	10.00	Am	To	1.00	Pm	
221762		2	1.00	Pm	To	4.00	Pm	
221968	206	1	5.00	Pm	To	7.00	Pm	
SAT	30.6.18	1	10.00	Am	To	1.00	Pm	
221968		2	2.00	Pm	To	5.00	Pm	
222127	159	1	5.00	Pm	To	7.00	Pm	
MON	2.7.18	2	4.00	Pm	To	8.00	Pm	
222127								
222239	112							

Day	Date	POLYCAR	on time	Am	To	off time	Am
TUE	3-7-18	1	9.00	Am	TO	12.00	Am
22239		2	2.00	Pm	TO	5.00	Pm
222410	171						
WED	4-7-18	1	9.30	Am	TO	12.00	Pm
222410		2	12.00	Pm	TO	3.00	Pm
222614	204	1	5.00	Pm	TO	8.00	Pm
THU	5-7-18	1	8.00	Pm	TO	12.00	Am
222614		2	12.00	Am	TO	3.00	Am
222893	279	1	3.00	Am	TO	6.00	Am
		2	7.00	Am	TO	8.00	Am
FRI	6-7-18	2	8.00	Pm	TO	12.00	Am
222893		1	12.00	Am	TO	3.00	Am
23151	258	2	4.00	Am	TO	8.00	Am
SAT	7-7-18	2	8.00	Pm	TO	12.00	Am
23151		1	12.00	Am	TO	3.00	Am
23386	235	2	4.00	Am	TO	7.30	Am
SUN	8-7-18	2	9.00	Pm	TO	12.00	Am
23386		1	3.00	Am	TO	7.30	Am
23568	182						
MON	9-7-18	2	8.00	Pm	TO	12.00	Am
23568		1	12.00	Am	TO	3.00	Am
23838	270	2	4.00	Am	TO	7.00	Am
		1	7.00	Am	TO	8.00	Am

Day	Date	Pulley	On-time	Am	Off-time	Am
FRI	20-7-18	2	8:00 Pm	TO	12:00	Am
025846	>	1	12:00 Am	TO	4:00	Am
026095	249	2	5:00 Am	TO	8:00	Am
SAT	21-7-18	2	9:00 Pm	TO	12:00	Am
026065	>	1	12:00 Am	TO	4:00	Am
026321	256	2	4:00 Am	TO	6:00	Am
SUN	22-7-18	2	8:00 Pm	TO	12:00	Am
026321	>	1	12:00 Am	TO	4:00	Am
026517	196	2	6:00 Am	TO	8:00	Am
MON	23-7-18	2	9:30 Pm	TO	12:00	Am
026517	>	1	12:00 Am	TO	3:00	Am
026771	254	2	4:00 Am	TO	7:00	Am
		1	7:00 Am	TO	8:00	Am
TUE	24-7-18	2	9:00 Pm	TO	12:00	Am
026771	>	1	12:00 Am	TO	3:00	Am
07006	235	2	4:00 Am	TO	6:00	Am
		1	6:00 Am	TO	8:00	Am
WED	25-7-18	1	9:00 Pm	TO	12:00	Am
07006	>	2	12:00 Am	TO	4:00	Am
07228	292	1	5:00 Am	TO	8:00	Am
THU	26-7-18	2	9:00 Pm	TO	12:00	Am
07228	>	1	12:00 Am	TO	4:00	Am
07476	248	2	5:00 Am	TO	8:00	Am
FRI	27-7-18	2	9:00 Pm	TO	12:00	Am
07476	>	1	12:00 Am	TO	4:00	Am
07777	301	2	6:00 Am	TO	8:00	Am

Day	Date	Player	On	Time	Am	To	Off	Time	Am
SAT	28.7.18	1	9.00	Pm	To	12.00	Am		
227777		2	12.00	Am	To	4.00	Am		
228033	256	1	4.00	Am	To	8.00	Am		
SUN	29.7.18	2	8.30	Pm	To	11.30	Pm		
228033		1	11.30	Pm	To	4.00	Am		
228090	257	2	5.00	Am	To	8.00	Am		
MON	30.7.18	1	9.00	Pm	To	12.00	Am		
228290		2	12.00	Am	To	4.00	Am		
228592	302	1	5.00	Am	To	8.30	Am		
TUE	31.7.18	1	8.30	Pm	To	12.00	Am		
228592		2	12.00	Am	To	3.00	Am		
228863	271	1	3.00	Am	To	6.00	Am		
WED	1.8.18	1	9.00	Am	To	12.00	Am		
THU	2.8.18	1	8.30	Pm	To	12.00	Am		
228965		2	12.00	Am	To	4.00	Am		
229250	285	1	5.00	Am	To	8.00	Am		
FRI	3.8.18	2	2.00	Pm	To	12.00	Am		
229250		1	12.00	Am	To	4.00	Am		
229490	210	2	5.00	Am	To	8.00	Am		
SAT	4.8.18	2	9.00	Pm	To	12.00	Am		
229490		1	12.00	Am	To	4.00	Am		
229738	218	2	5.00	Am	To	8.00	Am		
SUN	5.8.18	2	10.00	Pm	To	1.00	Am		
229738		1	1.00	Am	To	4.00	Am		
229946	208	2	5.00	Am	To	8.00	Am		

Day	Date	Pulley	on time	Am	To	off time	Am
MON	6.8.18	2	9.00	Pm	To	12.00	Am
29046	>251	1	12.00	Am	To	4.00	Am
30197		2	5.00	Am	To	8.00	Am
TUE	7.8.18	1	9.00	Pm	To	12.00	Am
30197	>218	2	12.00	Am	To	3.00	Am
30415		1	3.00	Am	To	7.00	Am
WED	8.8.18		To			8.15	8.18
THU	16.8.18	2	9.00	Am	To	12.00	Pm
30415	>649	1	12.00	Pm	To	4.00	Pm
31064		2	4.00	Pm	To	7.30	Pm
FRI	17.8.18	2	8.00	Am	To	12.00	Pm
31064	>227	1	1.00	Pm	To	4.00	Pm
31291		2	4.00	Pm	To	7.00	Pm
SAT	18.8.18	1	8.00	Am	To	11.00	Am
31291	>232	2	11.00	Am	To	2.00	Pm
31523		1	4.00	Pm	To	7.30	Pm
SUN	19.8.18	2	9.00	Am	To	12.00	Am
31523	>215	1	12.00	Pm	To	3.00	Pm
31738		2	3.00	Pm	To	6.00	Pm
MON	20.8.18	2	9.00	Am	To	12.00	Pm
31738	>263	1	12.00	Pm	To	3.00	Pm
31991		2	4.00	Pm	To	8.00	Pm
TUE	21.8.18	1	9.00	Am	To	12.00	Pm
31991	>267	2	12.00	Pm	To	3.00	Pm
3258		1	4.00	Pm	To	8.00	Pm

Day	Date	PULAYAS	ON-HOME	Am	To	OFF-HOME	Am
WED	22-8-18	2	9.00	Am	To	12.00	Pm
232258	224	1	12.00	Pm	To	3.00	Pm
232482		2	4.00	Pm	To	8.00	Pm
THU	23-8-18	1	9.00	Am	To	12.00	Pm
232482	303	2	12.00	Pm	To	3.00	Pm
232735		1	4.00	Pm	To	8.00	Pm
FRI	24-8-18	1	8.00	Am	To	11.00	Am
232735	280	2	11.00	Am	To	2.00	Pm
233015		1	4.00	Pm	To	7.00	Pm
		2	7.00	Pm	To	8.00	Pm
SAT	25-8-18	1	8.00	Am	To	11.30	Am
233015	219	2	11.30	Am	To	2.30	Pm
233234		1	4.00	Pm	To	7.00	Pm
SUN	26-8-18	1	9.00	Am	To	12.00	Pm
233234	227	2	12.00	Pm	To	3.00	Pm
233461		1	3.00	Pm	To	6.00	Pm
MON	27-8-18	2	9.00	Am	To	12.00	Pm
233461	215	1	12.00	Pm	To	3.00	Pm
233676		2	6.00	Pm	To	8.00	Pm
TUE	28-8-18	2	7.00	Am	To	11.00	Am
233676	283	1	11.00	Am	To	2.00	Pm
233959		2	2.00	Pm	To	5.00	Pm
		1	5.00	Pm	To	7.30	Pm
WED	29-8-18	2	9.00	Am	To	12.00	Pm
233959	229	1	12.00	Pm	To	3.00	Pm
234188		2	3.00	Pm	To	6.00	Pm
		1	6.00	Pm	To	7.00	Pm

DAY	DATE	POLYMER	on-time	Am	To	OFF time	Am
THU	30.8.18	1	8.30	Am	To	12.00	Pm
234188	> 247	2	12.00	Pm	To	3.00	Pm
234435		1	3.00	Pm	To	6.00	Pm
		2	6.00	Pm	To	7.30	Pm
FRI	31.8.18	1	8.30	Am	To	11.30	Am
234435	> 232	2	11.30	Am	To	2.00	Am
234667		1	4.00	Pm	To	7.30	Pm
SAT	1.9.18	2	8.30	Am	To	12.00	Pm
234667	> 241	1	12.00	Pm	To	3.00	Pm
234908		2	4.00	Pm	To	7.30	Pm
MON	3.9.18	2	8.30	Am	To	12.00	Pm
234908	> 209	1	12.00	Pm	To	3.00	Pm
235207		2	3.00	Pm	To	7.00	Pm
		1	7.00	Pm	To		
TUE	4.9.18	2	8.30	Am	To	12.00	Pm
235207	> 254	1	12.00	Pm	To	3.00	Pm
235461		2	4.00	Pm	To	8.00	Pm
WED	5.9.18	2	9.00	Am	To	11.00	Am
235461	> 176	1	3.00	Pm	To	6.00	Pm
235637		2	6.00	Pm	To	8.00	Pm
THU	6.9.18		olpage	Completed			
FRI	7.9.18	1	9.30	Am	To	12.00	Pm
235637	> 361	2	4.00	Pm	To	7.00	Pm
235998		1	7.00	Pm	To	8.00	Pm
SAT			motor	Completed			

Day	Date	PVLOX	one time	Am	To	off time	Am
MON	10.9.18	2	7.00	Pm	To	11.00	Pm
235998	558	1	11.00	Pm	To	2.00	Am
236556		2	3.00	Am	To	6.00	Am
		1	6.00	Am	To	9.00	Am
TUE	11.9.18	2	6.00	Pm	To	9.00	Pm
236556	239	1	9.00	Pm	To	12.00	Am
236795		2	3.00	Am	To	6.00	Am
WED	12.9.18	1	9.30	Pm	To	12.00	Am
236795	188	2	12.00	Am	To	3.00	Am
236983		1	3.00	Am	To	6.00	Am
THU	13.9.18	2	9.30	Pm	To	12.30	Am
236983	265	1	12.30	Am	To	4.00	Am
237248		2	5.00	Am	To	8.00	Am
FRI	14.9.18	2	8.30	Pm	To	12.00	Am
237248	283	1	12.00	Am	To	4.00	Am
237531		2	5.00	Am	To	8.00	Am
SAT	15.9.18	2	8.30	Pm	To	12.00	Am
237531	307	1	12.00	Pm	To	3.00	Am
237888		2	4.00	Am	To	8.00	Am
SUN	16.9.18	2	8.30	Pm	To	12.00	Am
237838	227	1	12.00	Am	To	4.00	Am
238065		2	5.30	Am	To	8.00	Am
MON	17.9.18	2	8.30	Pm	To	12.00	Am
238065	283	1	12.00	Am	To	3.00	Am
238348		2	4.00	Am	To	8.00	Am

Day	Date	PULover	ent time	Am	To	off time	Am
TUE	18.9.18	2	8.30	pm	To	12.00	Am
238348	262	1	12.00	Am	To	4.00	Am
138610		2	5.00	Am	To	8.00	Am
WED	19.9.18	2	8.30	pm	To	12.00	Am
238610	267	1	12.00	Am	To	4.00	Am
238877		2	5.00	Am	To	8.00	Am
THU	20.9.18	2	8.30	pm	To	12.00	Am
238877	271	1	12.00	Am	To	4.00	Am
139148		2	5.00	Am	To	8.00	Am
FRI	21.9.18	2	8.30	pm	To	12.00	Am
139148	362	1	12.00	Am	To	4.00	Am
139510		2	5.00	Am	To	8.00	Am
SAT	22.9.18	2	8.30	pm	To	12.00	Am
139510	332	1	12.00	Am	To	3.00	Am
139842		2	4.00	Am	To	7.30	Am
SUN	23.9.18	1	8.30	pm	To	12.00	Am
139842	223	2	12.00	Am	To	4.00	Am
140125		1	5.00	Am	To	8.00	Am
MON	24.9.18	2	8.30	pm	To	11.30	pm
140125	212	1	11.30	pm	To	3.00	Am
140337		2	4.00	Am	To	7.30	Am
TUE	25.9.18	MOTAR COMPLAINT					
WED	26.9.18	1	8.30	pm	To	11.30	pm
140337	212	2	11.30	pm	To	3.00	Am
140729		1	4.00	Am	To	7.00	Am
		2	7.00	Am	To	8.00	Am

DAY	Date	PULOPAY	ON time	Am	To	OFF time
THU	27.9.18	2	8.00	Pm	To	11.00
240729	272	1	11.00	Pm	To	3.00
241001		2	4.00	Am	To	7.00
		1	7.00	Am	To	8.00
FRI	28.9.18	1	8.00	Pm	To	11.00
241001	305	2	11.00	Pm	To	3.00
241305		1	3.00	Am	To	6.00
		2	6.00	Am	To	8.00
SAT	29.9.18	1	9.00	Pm	To	12.00
241305	212	2	12.00	Am	To	4.00
241547		1	5.00	Am	To	8.00
SUN	30.9.18	1	8.30	Pm	To	11.00
241547	217	2	11.00	Pm	To	3.00
241764		1	4.00	Am	To	7.30
MON	1.10.18	-	MOTOR COMPLAINTS			
TUE	2.10.18	COURT MANDATE 1 leave				
WED	3.10.18	2	9.00	Pm	To	12.00
241764	412	1	12.00	Am	To	3.00
242176		2	4.00	Am	To	8.00
THU	4.10.18	2	8.30	Pm	To	11.30
242176	268	1	11.30	Pm	To	3.00
242444		2	4.00	Am	To	8.00
FRI	5.10.18	1	8.30	Pm	To	11.30
242444	222	2	11.30	Pm	To	3.00
242666		1	4.00	Am	To	7.00
		2	7.00	Am	To	8.00

Day	Date	PuLoyas	ON time	Am	To	OFF time	Am
SAT	6.10.18	1	8.30	Pm	To	12.00	Am.
242666	204	2	12.00	Am	To	3.00	Am
142870		1	5.00	Am	To	7.30	Am.
SUN	7.10.18	1	8.30	Pm	To	12.00	Am
42870	246	2	12.00	Am	To	3.00	Am
43116		1	3.00	Am	To	6.00	Am
		2	6.00	Am	To	8.00	Am
MON	8.10.18	2	8.00	Pm	To	11.00	Pm
43116	239	1	11.00	Pm	To	3.00	Am
43355		2	3.00	Am	To	6.00	Am
		1	6.00	Am	To	8.00	Am
TUE	9.10.18	1	8.00	Pm	To	11.00	Pm
43355	248	2	11.00	Pm	To	3.00	Am
43603		1	4.00	Am	To	8.00	Am.
WED	10.10.18	2	8.00	Pm	To	11.00	Pm
43603	278	1	11.00	Pm	To	3.00	Am
43881		2	3.00	Am	To	6.00	Am
		1	6.00	Am	To	8.00	Am.
THU	11.10.18	1	8.00	Pm	To	11.00	Pm
13881	246	2	11.00	Pm	To	3.00	Am
4127		1	4.30	Am	To	8.00	Am
FRI	12.10.18	1	8.00	Pm	To	11.00	Pm
4127	251	2	11.00	Pm	To	3.00	Am
4378		1	4.00	Am	To	7.30	Am
SAT	13.10.18	2	8.00	Pm	To	11.00	Pm
14378	246	1	11.00	Pm	To	3.00	Am
4624		2	4.00	Am	To	8.00	Am

Day	Date	PULOXARON	time	Am	To	Off time	Am
SUN	14.10.18	1	9.30	Pm	To	12.00	Am
244624		2	12.00	Am	To	3.00	Am
1244		1	4.00	Am	To	8.00	Am
MON	15.10.18	2	8.00	Pm	To	11.00	Pm
244624		1	11.00	Pm	To	3.00	Am
245072	448	2	4.00	Am	To		
TUE	16.10.18						
245072		1	8.00	Pm	To	12.00	Am
245318		2	12.00	Am	To	3.00	Am
		1	4.00	Am	To	8.00	Am
WED	17.10.18	1	9.00	Pm	To	12.00	Am
245318		2	12.00	Am	To	3.00	Am
245485	167	1	4.00	Am	To	8.00	Am
THU	18.10.18	LEAVE					
FRI	19.10.18	1	8.00	Pm	To	12.00	Am
245485		2	12.00	Am	To	4.00	Am
245707	222	1	5.00	Am	To	8.00	Am
SAT	20.10.18	1	8.00	Pm	To	11.00	Pm
245707		2	11.00	Pm	To	3.00	Am
245842	235	1	4.00	Am	To	7.00	Am
SUN	21.10.18	2	8.00	Pm	To	12.00	Am
245242		1	12.00	Am	To	3.00	Am
245123	251	2	5.00	Am	To	8.00	Am
MON	22.10.18	2	9.00	Pm	To	12.00	Am
246193		1	12.00	Am	To	4.00	Am
246115	293	1	5.00	Am	To		

Day	Date	PULCOYar	on-time	Am	TO	OFF-time	Am.
TUE	28-10-18	1	9.00	Pm	TO	12.00	Am.
246415	243	2	12.00	Am	TO	4.00	Am.
46658		1	5.00	Am	TO	8.00	Am.
WED.	29-10-18	2	8.00	Pm	TO	12.00	Am
246658	273	1	12.00	Am	TO	4.00	Am.
246931		2	5.00	Am	TO	8.00	Am.
THU	29-10-18	2	9.00	Pm	TO	12.00	Am
246931		1	12.00	Am	TO	4.00	Am
47168		2	4.00	Am	TO	8.00	Am
FRI	26-10-18	1	8.00	Pm	TO	11.00	Pm
47168		2	11.00	Pm	TO	3.00	Am
77395		1	4.00	Am	TO	5.30	Am.
SAT	27-10-18	1	11.00	Pm	TO	2.00	Am.
77395		2	2.00	Am	TO	5.00	Am
77606		1	5.00	Am	TO	8.00	Am.
SUN	28-10-18	1	8.00	Pm	TO	11.00	Pm
		2	11.00	Pm	TO	3.00	Am.
MON	29-10-18	1	8.00	Pm	TO	11.00	Pm
77606	343	2	11.00	Pm	TO	3.00	Am.
77949							
TUE	30-10-18	1	8.00	Pm	TO	11.00	Pm
77949	266	2	11.00	Pm	TO	3.00	Am.
8215		1	3.00	Am	TO	6.00	Am.
		2	6.00	Am	TO	8.00	Am.

Day	Date	PuLoXcur	on time	Am	To	off time	Am
WED	31.10.18	2	8.00	Pm	To	11.00	Pm
248215	281	1	11.00	Pm	To	3.00	Am
248436		2	5.00	Am	To	8.00	Am
THU	1.11.18	2	9.00	Pm	To	12.00	Am
248496	243	1	12.00	Am	To	4.00	Am
248739		2	5.00	Am	To	8.00	Am
FRI	2.11.18	1	8.00	Pm	To	11.00	Pm
248739	257	2	11.00	Pm	To	3.00	Am
248996		1	3.00	Am	To	6.00	Am
		2	6.00	Am	To	8.00	Am
SAT	3.11.18	2	8.00	Pm	To	12.00	Am
248996	261	1	12.00	Am	To	4.00	Am
249257		2	5.00	Am	To	8.00	Am
SUN	4.11.18	1	8.00	Pm	To	12.00	Am
249257	248	2	12.00	Am	To	4.00	Am
249505		1	4.00	Am	To	8.00	Am
MON	5.11.18	2	9.00	Pm	To	12.00	Am
249505	157	1	12.00	Am	To	4.00	Am
249669		2	5.00	Am	To	6.00	Am
TUE	6.11.18	1	8.00	Am	To	11.00	Pm
249669	209	2	11.00	Pm	To	3.00	Am
249870		1	4.00	Am	To	6.30	Am
WED	7.11.18	1	11.00	Pm	To	3.00	Am
249870	181	2	3.00	Am	To	6.00	Am
250051		1	6.00	Am	To	8.00	Am

Day	Date	Puloyar	on time	Am	To	off time	Am
THU	8.11.18	1	8.00	Pm	To	12.00	Am
50051	252	2	12.00	Am	To	4.00	Am
50303		1	5.00	Am	To	8.00	Am
FRI	9.11.18	2	8.00	Pm	To	12.00	Am
50303	260	1	12.00	Am	To	3.00	Am
50563		2	5.00	Am	To	8.00	Am
SAT	10.11.18	1	8.00	Pm	To	12.00	Am
50563	267	2	12.00	Am	To	3.00	Am
50880		1	5.00	Am	To	8.00	Am
SUN	11.11.18	1	8.00	Pm	To	12.00	Am
50830	260	2	12.00	Am	To	4.00	Am
51090		1	5.00	Am	To	8.00	Am
MON	12.11.18	2	8.00	Pm	To	12.00	Am
51090		1	12.00	Am	To	3.00	Am
51371		2	5.00	Am	To	8.00	Am
TUE	13.11.18	1	8.00	Pm	To	12.00	Am
51371	226	2	12.00	Am	To	3.00	Am
51597		1	4.00	Am	To	6.00	Am
WED	14.11.18	2	8.00	Pm	To	11.00	Pm
51597	259	1	11.00	Pm	To	3.00	Am
51856		2	5.00	Am	To	8.00	Am
THU	15.11.18	1	9.00	Pm	To	12.00	Am
51856	292	2	12.00	Am	To	3.00	Am
52148		1	4.00	Am	To	8.00	Am
FRI	16.11.18	2	8.00	Pm	To	12.00	Am
52148		1	12.00	Am	To	4.00	Am
52356		2	5.00	Am	To	7.30	Am

Day	Date	PuLaya	on-time	Am	To	off-time	Am
SAT	17.11.18	1	9.00	Pm	To	12.00	Am
252356	229	2	12.00	Am	To	4.00	Am
252525		1	5.00	Am	To	7.00	Am
SUN	18.11.18	2	9.00	Pm	To	12.00	Am
252585	181	1	12.00	Am	To	3.00	Am
252766		2	4.00	Am	To	8.00	Am
MON	19.11.18	1	9.00	Pm	To	12.00	Am
252766	239	2	12.00	Am	To	4.00	Am
253005		1	4.00	Am	To	8.00	Am
TUE	20.11.18	1	8.30	Pm	To	11.30	Pm
253005	286	2	11.30	Pm	To	3.00	Am
253291		1	3.00	Am	To	6.00	Am
		2	6.00	Am	To	10.00	Am
WED	21.11.18	2	8.00	Pm	To	11.00	Pm
253291	285	1	11.00	Pm	To	2.00	Am
253576		2	2.00	Am	To	5.00	Am
		1	6.00	Am	To	8.00	Am
THU	22.11.18	2	8.00	Pm	To	11.00	Pm
253830	539	1	11.00	Pm	To	3.00	Am
253830		2	4.00	Am	To	7.00	Am
		1	7.00	Am	To	8.00	Am
FRI	23.11.18	1	8.00	Pm	To	11.00	Pm
253830	210	2	11.00	Pm	To	3.00	Am
254085		1	5.00	Am	To	8.00	Am
SAT	24.11.18	2	8.00	Pm	To	11.00	Pm
254085	226	1	11.00	Pm	To	3.00	Am
254811		2	4.00	Am	To	8.00	Am

Day	Date	PULoxar	on-ticant	Am	To	off-ticant	Am
SUN	25.11.18	2	8.00	Pm	To	11.00	Pm
254311	275	1	11.00	Am	To	3.00	Am
254586		2	3.00	Am	To	6.00	Am
		1	6.00	Am	To	8.00	Am
MON	26.11.18	1	9.00	Pm	To	12.00	Am
254586	230	2	12.00	Am	To	3.00	Am
254816		1	5.00	Am	To	8.00	Am
TUE	27.11.18	2	8.30	Pm	To	12.00	Am
254816	304	1	12.00	Am	To	4.00	Am
255120		2	4.00	Am	To	8.00	Am
WED	28.11.18	1	8.00	Pm	To	4.00	Pm
255120	292	2	11.00	Pm	To	3.00	Am
255412		1	3.00	Am	To	6.00	Am
		2	6.00	Am	To	8.00	Am
THU	29.11.18	1	8.00	Pm	To	11.00	Pm
255412	307	2	11.00	Pm	To	3.00	Am
255719		1	3.00	Am	To	6.00	Am
		2	6.00	Am	To	8.00	Am
FRI	30.11.18	1	8.00	Pm	To	11.00	Pm
255719	317	2	11.00	Pm	To	3.00	Am
256036		1	4.00	Am	To	8.00	Am
SAT	1.12.18	2	8.00	Pm	To	12.00	Am
256036	300	1	12.00	Am	To	4.00	Am
256336		2	4.00	Am	To	8.00	Am
SUN	2.12.18	1	8.00	Pm	To	11.00	Pm
256336	237	2	11.00	Pm	To	3.00	Am
256573		1	4.00	Am	To	8.00	Am

Day	Date	Polygar	on	time	Am	To	off time	A
MON	3.12.18	2	9.	00	Pm	To	12. 00	Am
256573	282	1	12.	00	Am	To	3. 00	Am
256855		2	3.	00	Am	To	6. 00	Am
		1	6.	00	Am	To	8. 30	Am
TUE	4.12.18	1	8.	00	Pm	To	12. 00	Am
256855	281	2	12.	00	Am	To	4. 00	Am
257136		1	4.	00	Am	To	8. 00	Am
WED	5.12.18	1	8.	00	Pm	To	12. 00	Am
257136	273	2	12.	00	Am	To	4. 00	Am
257409		1	4.	00	Am	To	8. 00	Am
THU	6.12.18	2	8.	00	Pm	To	12. 00	Am
257409	307	1	12.	00	Am	To	4. 00	Am
257726		2	5.	00	Am	To	8. 00	Am
FRI	7.12.18	1	8.	00	Pm	To	12. 00	Am
257726	311	2	12.	00	Am	To	3. 00	Am
258037		1	4.	00	Am	To	8. 00	Am
SAT	8.12.18	2	8.	00	Pm	To	12. 00	Am
258037	174	1	12.	00	Am	To	4. 00	Am
258211		2	4.	00	Am	To	8. 00	Am
SUN	9.12.18	2	8.	00	Pm	To	11. 00	Am
258211	274	1	11.	00	Pm	To	3. 00	Am
258425		2	4.	00	Am	To	8. 00	Am
MON	10.12.18	1	8.	00	Pm	To	11. 00	Pm
258425	285	2	11.	00	Pm	To	3. 00	Am
258810		1	4.	00	Am	To	8. 00	Am

DAY	Date	POLYMER	ON time	Am	To	off time	Am
TUE	11.12.18	1	8.00	Pm	To	11.00	Pm
258810	257	2	11.00	Pm	To	3.00	Am
259127		1	4.00	Am	To	8.00	Am
WED	12.12.18	-	Leave	-	-	-	-
THU	13.12.18	1	8.00	Pm	To	12.00	Am
259127	295	2	12.00	Am	To	3.00	Am
259422		1	4.00	Am	To	8.00	Am
FRI	14.12.18	2	8.00	Pm	To	12.00	Am
259422	256	1	12.00	Am	To	3.00	Am
259678		2	3.00	Am	To	6.00	Am
		1	6.00	Am	To	8.00	Am
SAT		-	-	-	-	-	-
SUN	16.12.18	2	8.00	Pm	To	12.00	Am
259678	271	1	12.00	Am	To	4.00	Am
259949		2	4.00	Am	To	8.00	Am
MON	17.12.18	2	8.00	Pm	To	11.00	Pm
259949	261	1	11.00	Pm	To	3.00	Am
260210		2	4.00	Am	To	8.00	Am
TUE	18.12.18	1	8.00	Pm	To	12.00	Am
WED	19.12.18	1	8.00	Pm	To	12.00	Am
60210	170	2	12.00	Am	To	3.00	Am
60380		1	4.00	Am	To	8.00	Am
THU	20.12.18	1	8.00	Pm	To	11.00	Pm
60380	303	2	11.00	Pm	To	3.00	Am
60683		1	4.00	Am	To	8.00	Am
FRI	21.12.18	1	8.00	Pm	To	12.00	Am
60683	270	2	12.00	Am	To	4.00	Am
60988		1	5.00	Am	To	8.00	Am

Day	Date	Pulover	On time	Am	To	Off time	Am
SAT	22.12.18	1	8.00	Pm	To	12.00	Am
260988		2	12.00	Am	To	4.00	Am
		1	4.00	Am	To	8.00	Am
SUN	23.12.18	2	8.00	Pm	To	12.00	Am
260988	23.12.18	1	12.00	Am	To	3.00	Am
261527	539	2	4.00	Am	To	8.00	Am
MON	24.12.18	1	8.00	Pm	To	12.00	Am
261527		2	12.00	Am	To	4.00	Am
261791	264	1	4.00	Am	To	7.00	Am
		2	7.00	Am	To	8.00	Am
TUE	25.12.18	2	8.00	Pm	To	11.00	Pm
261791		1	11.00	Pm	To	3.00	Am
262053	262	2	3.00	Am	To	6.00	Am
		1	6.00	Am	To	8.00	Am
WED	26.12.18	2	8.00	Pm	To	11.00	Am
262053		1	11.00	Pm	To	3.00	Am
262319	266	2	4.00	Am	To	8.00	Am
THU	27.12.18	1	8.00	Pm	To	11.00	Pm
262319		2	11.00	Pm	To	3.00	Am
262374	255	1	3.00	Am	To	6.00	Am
		2	6.00	Am	To	8.00	Am
FRI	28.12.18	2	8.00	Pm	To	11.00	Pm
		1	11.00	Pm	To	2.00	Am
262374		2	3.00	Am	To	6.00	Am
262851	277	1	6.00	Am	To	8.00	Am
SAT	29.12.18	1	8.00	Pm	To	12.00	Am
262851		2	12.00	Am	To	3.00	Am
263141	278	1	4.00	Am	To	8.00	Am

Day	Date	Pu Locay	On time	Am	To	Off time	Am
SUN	30.12.18	1	8.00	Pm	To	12.00	Am
263141	251	2	12.00	Am	To	3.00	Am
263395		1	4.00	Am	To	8.00	Am
MON	31.12.18	1	8.00	Pm	To	11.00	Am
263395	235	2	11.00	Pm	To	3.00	Am
263690		1	4.00	Am	To	8.00	Am
TUE	01.1.19	2	8.00	Pm	To	11.30	Pm
263690	296	1	11.30	Pm	To	3.00	Am
263988		2	4.00	Am	To	8.00	Am
WED	2.1.19	1	8.00	Pm	To	11.30	Pm
263988		2	11.30	Pm	To	3.00	Am
		1	4.00	Am	To	8.00	Am
THU	3.1.19	2	8.00	Pm	To	12.00	Am
263988	602	1	12.00	Am	To	3.00	Am
		2	3.00	Am	To	7.00	Am
264610		1	7.00	Am	To	8.00	Am
FRI	4.1.19	1	8.00	Pm	To	12.00	Am
	303	2	12.00	Am	To	4.00	Am
264610		1	4.00	Am	To	7.00	Am
264913		2	7.00	Am	To	8.00	Am
TUE	8.1.19	2	8.00	Pm	To	12.00	Am
264913	406	1	12.00	Am	To	4.00	Am
265313		2	4.00	Am	To	8.00	Am
WED	9.1.19	2	8.00	Pm	To	12.00	Am
265313	261	1	12.00	Am	To	4.00	Am
265800		2	4.00	Am	To	8.00	Am

Day	Date	Pulo year	on time	Am	TO	off time	Am
TAU	10.1.19	1	8.00	Pm	TO	12.00	Am
265580	278	2	12.00	Am	TO	4.00	Am
265258		1	4.00	Am	TO	8.00	Am
FRI	11.1.19	2	8.00	Pm	TO	12.00	Am
265858	574	1	12.00	Am	TO	4.00	Am
266432		2	4.00	Am	TO	8.00	Am
SAT	12.1.19	1	8.00	Pm	TO	12.00	Am
266432	807	2	12.00	Am	TO	4.00	Am
266739		1	4.00	Am	TO	8.00	Am
SUN	13.1.19	1	8.00	Pm	TO	12.00	Am
266739	243	2	12.00	Am	TO	4.00	Am
266982		1	4.00	Am	TO	8.00	Am
MON	14.1.19	2	8.00	Pm	TO	12.00	Am
266982	250	1	12.00	Am	TO	4.00	Am
267232		2	4.00	Am	TO	8.00	Am
267480	PONGAL	15.1.19			TO	16.1.19	1.00 PM
THU	17.1.19	1	8.00	Pm	TO	12.00	Am
267932	255	2	12.00	Am	TO	4.00	Am
267481		1	4.00	Am	TO	8.00	Am
FRI	18.1.19	2	8.00	Pm	TO	12.00	Am
267987	381	1	12.00	Am	TO	4.00	Am
267568		2	4.00	Am	TO	8.00	Am
SAT	19.1.19	2	8.00	Pm	TO	12.00	Am
267868	388	1	12.00	Am	TO	4.00	Am
268148		2	4.00	Am	TO	8.00	Am

DAY	DATE	PULoyay	on time	Am	TO	OFF time	Am
SUN	20.1.19	1	8.00	Pm	TO	12.00	Am
268148		0	12.00	Am	TO	4.00	Am
268418	262	1	4.00	Am	TO	8.00	Am
MON	21.1.19	PILande	Riper	orking			
TUE	22.1.19	1	8.00	Pm	TO	12.00	Am
26810		2	12.00	Am	TO	4.00	Am
268714	804	2	4.00	Am	TO	8.00	Am
WED	23.1.19	2	8.00	Pm	TO	12.00	Am
		1	12.00	Am	TO	4.00	Am
268714		2	4.00	Am	TO	7.00	Am
268960	246	1	7.00	Am	TO	8.00	Am
THU	24.1.19	1	8.00	Pm	TO	12.00	Am
68960		2	12.00	Am	TO	4.00	Am
68258	298	1	4.00	Am	TO	8.00	Am
FRI	25.1.19	2	8.00	Pm	TO	12.00	Am
269258		1	12.00	Am	TO	4.00	Am
269507	249	2	4.00	Am	TO	7.30	Am
SAT	26.1.19	1	9.00	Pm	TO	12.00	Am
69507		2	12.00	Am	TO	4.00	Am
69690	183	1	4.00	Am	TO	6.00	Am
MON	28.1.19	1	8.00	Pm	TO	12.00	Am
69630		2	12.00	Am	TO	4.00	Am
70098	408	1	4.00	Am	TO	8.00	Am
TUE	29.1.19	2	8.00	Pm	TO	12.00	Am
		1	12.00	Am	TO	3.00	Am
70098		2	3.00	Am	TO	6.00	Am
70400	302	1	6.00	Am	TO	8.00	Am

Day	Date	Puloyan	on time	Am	To	Off time	F
WED	30.1.19	1	8.00	Pm	To	12.00	F
T 270400		2	12.00	Am	To	4.00	A
26 270719	319	1	4.00	Am	To	8.00	F
26							
THU	31.1.19	2	8.00	Pm	To	12.00	F
F 270719		1	12.00	Am	To	4.00	A
26 271034	315	2	4.00	Am	To	8.00	A
26							
FRI	1.2.19	2	8.00	Pm	To	12.00	A
271034		1	12.00	Am	To	4.00	A
21 271435	401	2	4.00	Am	To	8.00	A
21							
SAT	2.2.19	1	3.30	Pm	To	6.00	Pm
		2	6.00	Pm	To	9.00	Pm
		1	9.00	Pm	To	12.00	Am
2 271435		2	12.00	Am	To	4.00	Am
2 271897	462	1	4.00	Am	To	8.00	Am
SUN	3.2.19	1	6.30	Pm	To	9.30	Pm
2		2	9.30	Pm	To	12.00	Am
2 271897		1	12.00	Am	To	4.00	Am
272200	303	2	4.00	Am	To	8.00	Am
0							
MON	4.2.19	2	8.00	Pm	To	12.00	Am
272200		1	12.00	Am	To	4.00	Am
2 272538	338	2	4.00	Am	To	8.00	Am
2							
TUE	5.2.19	1	8.00	Pm	To	12.00	Am
272538		2	12.00	Am	To	4.00	Am
272830	842	1	4.00	Am	To	8.00	Am
WED	6.2.19	1	8.00	Pm	To	12.00	Am
272830		2	12.00	Am	To	4.00	Am
		1	4.00	Am	To	8.00	Am

DAY	Date	Pulovax	on Hand	Am	To	off time	Am
THU	7.2.19	2	8.00	pm	TO	12.00	Am
272880	611	1	12.00	Am	TO	4.00	Am
273491		2	4.00	Am	TO	8.00	Am
FRI	8.2.19	2	8.00	pm	TO	12.00	Am
273491	257	1	12.00	Am	TO	4.00	Am
273748		2	4.00	Am	TO	8.00	Am
SAT	9.2.19	1	8.00	pm	TO	12.00	Am
273748	343	2	12.00	Am	TO	4.00	Am
274091		1	4.00	Am	TO	8.00	Am
SUN	10.2.19	2	8.30	pm	TO	12.00	Am
274091	268	1	12.00	Am	TO	4.00	Am
74359		2	5.00	Am	TO	8.00	Am
MON	11.2.19	1	8.00	pm	TO	12.00	Am
74359	300	2	12.00	Am	TO	4.00	Am
74659		1	4.00	Am	TO	8.00	Am
TUE	12.2.19	2	8.00	pm	TO	12.00	Am
74659	284	1	12.00	Am	TO	4.00	Am
74943		2	4.00	Am	TO	8.00	Am
WED	13.2.19	1	8.00	pm	TO	12.00	Am
74943	336	2	12.00	Am	TO	4.00	Am
5279		1	4.00	Am	TO	8.00	Am
THU	14.2.19	1	8.00	pm	TO	12.00	Am
FRI	15.2.19	2	8.00	pm	TO	12.00	Am
75279	461	1	12.00	Am	TO	4.00	Am
75740		2	4.00	Am	TO	8.00	Am

1	Day	Date	Pulo	Yax	on time	Am	To	off time	1
2	SAT	16.2.19	1		8.00	Pm	TO	12.00	P
2	275740	325	2		12.00	Am	TO	4.00	P
2	276065		1		4.00	Am	TO	6.00	A
2	SUN	17.2.19	1		8.00	Pm	TO	12.00	P
2	276065	280	2		12.00	Am	TO	3.00	P
2	276295		1		4.00	Am	TO	8.00	A
2	MON	18.2.19	2		8.00	Pm	TO	12.00	P
2	276295	361	1		12.00	Am	TO	4.00	P
2	276656		2		4.00	Am	TO	8.00	P
2	TUE	19.2.19	1		8.00	Pm	TO	12.00	P
2	276656	297	2		12.00	Am	TO	4.00	P
2	276953		1		4.00	Am	TO	8.00	P
2	WED	20.2.19	2		8.00	Pm	TO	12.00	P
2	276953	261	1		12.00	Am	TO	4.00	P
2	277214		2		4.00	Am	TO	8.00	P
0	THU	21.2.19	1		8.00	Pm	TO	12.00	Am
	277214	303	2		12.00	Am	TO	4.00	Am
	277517		1		5.00	Am	TO	8.00	Am
2	FRI	22.2.19	2		10.00	Pm	TO	2.00	Am
2	277517	197	1		2.00	Am	TO	6.00	Am
2	277714		2		6.00	Am	TO	7.00	Am
2	SAT	23.2.19	2		9.00	Pm	TO	12.00	Am
2	277714	073	1		12.00	Am	TO	4.00	Am
2	278087		2		4.00	Am	TO	8.00	Am
2	SUN	24.2.19	1		8.00	Pm	TO	12.00	Am
2	278087		2		12.00	Am	TO	4.00	Am
2			1						

Day	Date	Policy	On time	Am	To	Off time	Am
MON	25.2.19	1	8.00	Pm	To	12.00	Am
278371	454	2	12.00	Am	To	4.00	Am
278825		1	5.00	Am	To	8.00	Am
TUE	26.2.19	2	8.00	Pm	To	12.00	Am
278825	268	1	12.00	Am	To	4.00	Am
279093		2	5.00	Am	To	8.00	Am
WED	27.2.19	1	8.00	Pm	To	12.00	Am
279093	298	2	12.00	Am	To	4.00	Am
279391		1	5.00	Am	To	8.00	Am
THU	28.2.19	2	8.00	Pm	To	12.00	Am
279391	284	1	12.00	Am	To	4.00	Am
279675		2	5.00	Am	To	8.00	Am
FRI	3.3.19	1	8.00	Pm	To	12.00	Am
279675	737	2	12.00	Am	To	4.00	Am
278938		1	5.00	Am	To	8.00	Am
SAT	2.3.19	2	8.00	Pm	To	12.00	Am
278938	400	1	12.00	Am	To	4.00	Am
280227		2	5.00	Am	To	8.00	Am
SUN	3.3.19	2	8.00	Pm	To	12.00	Am
280227	275	1	12.00	Am	To	4.00	Am
280502		2	4.00	Am	To	8.00	Am
MON	4.3.19	1	8.00	Pm	To	12.00	Am
280502	290	2	12.00	Am	To	4.00	Am
280792		1	5.00	Am	To	8.00	Am
TUE	5.3.19	2	8.00	Pm	To	12.00	Am
280792		1	12.00	Am	To	4.00	Am
281075							

Day	Date	Puloyan	On	Off	Time	To	Off	Hand	P
2 WED	6.3.19	1	8.00	PM	TO	12.00	PM		
2 281075		2	12.00	AM	TO	4.00	PM		
281377	302	1	5.00	AM	TO	8.00	PM		
2 THU	7.3.19	2	8.00	PM	TO	12.00	PM		
2 281377		1	12.00	AM	TO	4.00	PM		
281747	370	2	5.00	AM	TO	8.00	PM		
2 FRI	8.3.19	1	8.00	PM	TO	12.00	PM		
2 281747		2	12.00	AM	TO	4.00	PM		
282021	244	1	4.00	AM	TO	7.00	PM		
SAT	9.3.19	2	8.00	PM	TO	12.00	PM		
2 282021		1	12.00	AM	TO	3.00	PM		
2		2	3.00	AM	TO	6.00	PM		
SUN	10.3.19	1	8.00	PM	TO	12.00	PM		
2 282021		2	12.00	AM	TO	4.00	PM		
2 282552	531	1	5.00	AM	TO	8.00	PM		
MON	11.3.19	2	8.00	PM	TO	12.00	PM		
282552		1	12.00	AM	TO	4.00	PM		
282865	313	2	5.00	AM	TO	8.00	PM		
2 TUE	12.3.19	2	8.00	PM	TO	12.00	PM		
282865		1	12.00	AM	TO	3.00	PM		
283119	254	2	4.00	AM	TO	8.00	PM		
2 WED	13.3.19	1	8.00	PM	TO	12.00	PM		
283119		2	12.00	AM	TO	4.00	PM		
283476	287	1	4.00	AM	TO	8.00	PM		
2 THU	14.3.19	2	8.00	PM	TO	12.00	PM		
283476		1	12.00	AM	TO	4.00	PM		

DAY	Date	Poloyar	on-line	Am	To	off-line	Am
FRI	15.3.19	1	8.00	Pm	To	12.00	Am
282739		2	12.00	Am	To	4.00	Am
284062	263	1	5.00	Am	To	8.00	Am
SAT	16.3.19	2	8.00	Pm	To	12.00	Am
284062		1	12.00	Am	To	4.00	Am
284390	322	2	5.00	Am	To	8.00	Am
SUN	17.3.19	1	8.00	Pm	To	12.00	Am
284390		2	12.00	Am	To	4.00	Am
284631	241	1	5.00	Am	To	8.00	Am
MON	18.3.19	2	8.00	Pm	To	12.00	Am
284631		1	12.00	Am	To	4.00	Am
284951	320	2	4.00	Am	To	8.00	Am
TUE	19.3.19	1	8.00	Pm	To	12.00	Am
284951		2	12.00	Am	To	4.00	Am
285219	268	1	5.00	Am	To	8.00	Am
WED	20.3.19	2	8.00	Pm	To	12.00	Am
285219		1	12.00	Am	To	4.00	Am
285560	341	2	6.00	Am	To	8.00	Am
THU	21.3.19	2	8.00	Pm	To	12.00	Am
285560		1	12.00	Am	To	4.00	Am
285960	400	2	5.00	Am	To	8.30	Am
FRI	22.3.19	1	8.00	Pm	To	12.00	Am
285960		2	12.00	Am	To	4.00	Am
286258	298	1	5.00	Am	To	8.00	Am

	Day	Date	Puloyar	on time	Am	To	off time	
2	SAT	23.3.19	1	8.00	Pm	To	12.00	A
2	286258	/220	2	12.00	Am	To	4.00	A
	286478		1	5.00	Am	To	7.30	A
2	SUN	24.3.19	2	8.00	Pm	To	12.00	A
2	286478	/185	1	12.00	Am	To	4.00	A
	286663							
2	MON	25.3.19	1	8.00	Pm	To	12.00	A
2	286663	/245	2	12.00	Am	To	4.00	A
	286908		1	5.00	Am	To	7.30	A
2	TUE	26.3.19	2	8.00	Am	To	12.00	A
2	288908	/286	1	12.00	Am	To	4.00	A
	287184		2	6.00	Am	To	8.00	A
2	WED	27.3.19	1	8.00	Pm	To	12.00	A
2	287134	/318	2	12.00	Am	To	4.00	A
	287452		1	6.00	Am	To	8.00	A
2	THU	28.3.19	2	8.00	Pm	To	12.00	A
	287452	/320	1	12.00	Am	To	4.00	A
	287777		2	5.00	Am	To	7.30	A
2	FRI	29.3.19	1	8.00	Pm	To	12.00	A
2	287777	/340	2	12.00	Am	To	4.00	A
	288014		1	5.00	Am	To	7.30	A
2	SAT	30.3.19	2	8.00	Pm	To	12.00	A
2	288014	/340	1	12.00	Am	To	4.00	A
	288297		2	5.00	Am	To	7.30	A
2	SUN	31.3.19	1	8.00	Pm	To	12.00	A
2	288297	/340	2	12.00	Am	To	4.00	A

Day	Date	Polymer	am	time	Am	To	off/home	Am
MON	1.4.19	2	8	00 PM	To	12	00	Am
88610		1	12	00 AM	To	4	00	Am
88317	307	2	5	00 AM	To	8	00	Am
TUE	2.4.19	2	8	00 PM	To	12	00	Am
88317		1	12	00 AM	To	4	00	Am
88227	310	2	4	00 AM	To	8	00	Am
WED	3.4.19	1	8	00 PM	To	12	00	Am
88227		2	12	00 AM	To	4	00	Am
88496	269	1	6	00 AM	To	8	00	Am
THU	4.4.19	2	8	00 PM	To	12	00	Am
88496		1	12	00 AM	To	4	00	Am
88777	22	2	5	00 AM	To	8	00	Am
FRI	5.4.19	1	8	00 PM	To	12	00	Am
88777		2	12	00 AM	To	4	00	Am
90087	310	1	5	00 AM	To	8	00	Am
SAT	6.4.19	2	8	00 PM	To	12	00	Am
90087		1	12	00 AM	To	4	00	Am
90409	322	2	5	00 AM	To	8	00	Am
SUN	7.4.19	1	8	00 PM	To	12	00	Am
90409		2	12	00 AM	To	4	00	Am
90661	252	1	6	00 AM	To	8	00	Am
MON	8.4.19	2	8	00 PM	To	12	00	Am
90661		1	12	00 AM	To	4	00	Am
90968	307	2	5	00 AM	To	8	00	Am
TUE	9.4.19	1	8	00 PM	To	12	00	Am
90968		2	12	00 AM	To	4	00	Am
91212	244	1	5	00 AM	To	8	00	Am

	Day	Date	Polyar	on time	Am	To	off time
2	WED	10.4.19	1	8.00	Pm	To	12.00
2	291242		2	12.00	Am	To	4.00
	291479	237	1	6.00	Am	To	8.00
2	THU	11.4.19	2	8.00	Pm	To	12.00
2	291479		1	12.00	Am	To	4.00
	291805	326	2	5.00	Am	To	8.00
2	FRI	12.4.19	1	8.00	Pm	To	12.00
2	291805		2	12.00	Am	To	4.00
			1	5.00	Am	To	8.00
	SAT	13.4.19	—	1.00	V	U	—
2	SUN	14.4.19	2	8.00	Pm	To	12.00
	291805		1	12.00	Am	To	4.00
	292281	47	2	5.00	Am	To	8.00
2	MON	15.4.19	1	8.00	Pm	To	12.00
2	292281		2	12.00	Am	To	4.00
0	292600	319	1	5.00	Am	To	8.00
2	TUE	16.4.19	2	8.00	Pm	To	12.00
2	292600		1	12.00	Am	To	4.00
2	292907	307	2	6.00	Am	To	8.00
2	WED	17.4.19	1	8.00	Pm	To	12.00
2	292907		2	12.00	Am	To	4.00
2	293172	200	1	5.00	Am	To	8.00
2	THU	18.4.19	1	8.00	Pm	To	12.00
2	293172		2	12.00	Am	To	4.00
2	293381	210	1	5.00	Am	To	8.00

DAY	DATE	PULOVAR	ON-TIME	AM	TO	OFF-TIME	PM
Fri	19.4.19	1	8.00	PM	TO	12.00	AM
293389		2	12.00	AM	TO	1.00	AM
293536	148						
SAT	20.4.19	1	8.00	PM	TO	12.00	AM
293586		2	12.00	AM	TO	4.00	AM
293842	306	1	6.00	AM	TO	8.00	AM
SUN	21.4.19	1	8.00	PM	TO	12.00	AM
293842		2	12.00	AM	TO	4.00	AM
294073	231	1	6.00	AM	TO	8.00	AM
MON	22.4.19	1	8.00	PM	TO	12.00	AM
294073		2	12.00	AM	TO	4.00	AM
294380	307	1	5.00	AM	TO	8.00	AM
TUE	23.4.19	1	8.00	PM	TO	12.00	AM
294380		2	12.00	AM	TO	4.00	AM
294638	258	1	5.00	AM	TO	8.00	AM
WED	24.4.19	1	8.00	PM	TO	12.00	AM
294638		2	12.00	AM	TO	4.00	AM
294908	270	1	5.00	AM	TO	8.00	AM
THU	25.4.19	1	8.00	PM	TO	12.00	AM
294908		2	12.00	AM	TO	4.00	AM
295141	233	1	6.00	AM	TO	8.00	AM
FRI	26.4.19	1	8.00	PM	TO	12.00	AM
295141		2	12.00	AM	TO	4.00	AM
295370	249	1	6.00	AM	TO	8.00	AM
SAT	27.4.19	1	8.00	PM	TO	12.00	AM
295370		2	12.00	AM	TO	4.00	AM
295613		1	6.00	AM	TO	8.00	AM

	Day	Date	Pu. by car	On. time	Am	To	Off time	A
2	SUN	28.4.19	2	8.00	Pm	To	12.00	Am
2	295613		1	12.00	Am	To	4.00	Am
2	295823	210	2	5.00	Am	To	8.00	Am
2	MON	29.4.19	1	8.00	Pm	To	12.00	Am
2	295823		2	12.00	Am	To	4.00	Am
2	296089	266	1	5.00	Am	To	8.00	Am
2	TUE	30.4.19	1	8.00	Pm	To	12.00	Am
2	296089		2	12.00	Am	To	4.00	Am
2	296326	237	1	5.00	Am	To	8.00	Am
2	WED	1.5.19	1	8.00	Pm	To	12.00	Am
2	296326		2	12.00	Am	To	4.00	Am
2	296555	229	1	5.00	Am	To	8.00	Am
2	THU	2.5.19	2	8.00	Pm	To	12.00	Am
2	296555		1	12.00	Am	To	4.00	Am
2	296830	273	2	5.00	Am	To	8.00	Am
2	FRI	3.5.19	2	8.00	Pm	To	12.00	Am
2	296830		1	12.00	Am	To	4.00	Am
2	297084	254	2	6.00	Am	To	8.00	Am
2	SAT	4.5.19	1	8.00	Pm	To	12.00	Am
2	297084		2	12.00	Am	To	4.00	Am
2			1	4.00	Am	To	6.00	Am
2	SUN	5.5.19	1	8.00	Pm	To	12.00	Am
2	297084		2	12.00	Am	To	3.00	Am
2	297515	431	1	4.00	Am	To	8.00	Am

Day	Date	Pulo Yar	off-time	Am	To	off-time	Am
MON	6.5.19	2	8.00	Pm	TO	12.00	Am
297515	/341	1	12.00	Am	TO	4.00	Am
297856		2	5.00	Am	TO	8.00	Am
TUE	7.5.19	1	8.00	Pm	TO	12.00	Am
297856	/241	2	12.00	Am	TO	4.00	Am
298097		1	5.00	Am	TO	8.00	Am
WED	8.5.19	1	8.00	Pm	TO	12.00	Am
298097	/282	2	12.00	Am	TO	3.00	Am
298379		1	5.00	Am	TO	8.00	Am
THU	9.5.19	2	8.00	Pm	TO	12.00	Am
298379	/246	1	12.00	Am	TO	4.00	Am
298625		2	6.00	Am	TO	8.00	Am
FRI	10.5.19	1	8.00	Pm	TO	12.00	Am
298625	/258	2	12.00	Am	TO	4.00	Am
298883		1	5.30	Am	TO	8.00	Am
SAT	11.5.19	2	8.00	Pm	TO	12.00	Am
298883	/298	1	12.00	Am	TO	4.00	Am
299181		2	5.00	Am	TO	8.00	Am
SUN	12.5.19	1	8.00	Pm	TO	12.00	Am
299181	/222	2	12.00	Am	TO	4.00	Am
299403		1	5.00	Am	TO	8.00	Am
MON	13.5.19	1	8.00	Pm	TO	12.00	Am
299403	/243	2	12.00	Am	TO	4.00	Am
299646		1	5.00	Am	TO	8.00	Am
TUE	14.5.19	2	8.00	Pm	TO	12.00	Am
299646	/	1	12.00	Am	TO	4.00	Am
299912		2	5.00	Am	TO	8.00	Am

	Day	Date	Proj	Year	On	Time	Am	To	Off
2	WED	15.5.19	1		8	00	Pm	To	12.00
2	289912		2		12	00	Am	To	2.00
	300123	21	1		5	00	Am	To	8.00
2	THU	16.5.19	2		8	00	Pm	To	12.00
2	300123		1		12	00	Am	To	4.00
	300401	278	2		5	30	Am	To	8.00
2	FRI	17.5.19	1		8	00	Pm	To	12.00
2	300401		2		12	00	Am	To	4.00
	300639	238	1		5	00	Am	To	8.00
2	SAT	18.5.19	2		8	00	Pm	To	12.00
2	300629		1		12	00	Am	To	3.00
			2		5	00	Am	To	8.00
2	SUN	19.5.19	1		8	00	Pm	To	12.00
2	300639		2		12	00	Am	To	4.00
2	301175	536	1		5	00	Am	To	8.00
2	MON	20.5.19	2		8	00	Pm	To	12.00
	301175		1		12	00	Am	To	3.00
	301455	280	2		5	00	Am	To	8.00
2	TUE	21.5.19	1		8	00	Pm	To	12.00
	301455		2		12	00	Am	To	3.00
			1		5	00	Am	To	8.00
2	WED	22.5.19	2		8	00	Pm	To	12.00
	301455		1		12	00	Am	To	4.00
	301924	280	2		6	00	Am	To	8.00
2	THU	23.5.19	2		8	00	Am	To	12.00
	301924		1		12	00	Am	To	4.00

Day	Date	Puloxar	On field	Am	To	Off field	Am
FRI	24.5.19	> TO	8	Days	To	Leave	10m
WAT	25.5.19						
SUN	26.5.19	1	8.00	Pm	TO	12.00	Pm
302256	618	2	12.00	Am	TO	4.00	Am
302874		1	5.00	Am	TO	8.00	Am
MON	27.5.19	2	8.00	Pm	TO	12.00	Am
302874	294	1	12.00	Am	TO	3.00	Am
303168		2	5.00	Am	TO	8.00	Am
TUE	28.5.19	1	8.00	Pm	TO	12.00	Am
303168	231	2	12.00	Am	TO	4.00	Am
303399		1	5.00	Am	TO	8.00	Am
WED	29.5.19	1	8.00	Pm	TO	12.00	Am
303399	230	2	12.00	Am	TO	4.00	Am
303649		1	5.00	Am	TO	8.00	Am
THU	30.5.19	2	8.00	Pm	TO	12.00	Am
303649	224	1	12.00	Am	TO	4.00	Am
303873		2	5.00	Am	TO	8.00	Am
FRI	31.5.19	1	8.00	Pm	TO	12.00	Am
303873	271	2	12.00	Am	TO	4.00	Am
304144		1	5.00	Am	TO	8.00	Am
SAT	1.6.19	2	8.00	Pm	TO	12.00	Am
304144	274	1	12.00	Am	TO	4.00	Am
304418		2	5.00	Am	TO	8.00	Am
SUN	2.6.19	1	8.00	Pm	TO	12.00	Am
304418	226	2	12.00	Am	TO	4.00	Am
304644		1	5.00	Am	TO	8.00	Am

	Day	Date	Pulley	on time	Am	To	off time
2	MON	3.6.19	1	8.00	Pm	To	12.00
2	304644		2	12.00	Am	To	4.00
2	304911	267	1	5.00	Am	To	8.00
2	TUE	4.6.19	2	8.00	Pm	To	12.00
2	304911		1	12.00	Am	To	4.00
2	305132	221	2	5.00	Am	To	8.00
2	WED	5.6.19	1	8.00	Pm	To	12.00
2	305132		2	12.00	Am	To	4.00
2	305359	227	1	4.00	Am	To	8.00
2	THU	6.6.19	2	8.00	Pm	To	12.00
2	305359		1	12.00	Am	To	3.00
2	305617	258	2	5.00	Am	To	8.00
2	FRI	7.6.19	1	8.00	Pm	To	12.00
2	305617		2	12.00	Am	To	4.00
2	305904	287	1	6.00	Am	To	8.00
2	SAT	8.6.19	2	8.00	Pm	To	12.00
2	305804		1	12.00	Am	To	4.00
2	306103	199	2	5.00	Am	To	8.00
2	SUN	9.6.19	2	8.00	Pm	To	12.00
2	306103		1	12.00	Am	To	4.00
2	306325	222	2	5.00	Am	To	8.00
2	MON	10.6.19	1	8.00	Am	To	12.00
2	306325		2	12.00	Am	To	4.00
2	306617	200	1	6.00	Am	To	8.00
2	TUE	11.6.19	2	8.00	Pm	To	12.00
2	306617		1	12.00	Am	To	4.00
2	306854		1				

Day	Date	Peloyar	on	Time	Am	To	off	Time	Am
WED	12.6.19	1	8.00	Pm	To	12.00	Pm		
306854		2	12.00	Am	To	3.00	Am		
307121	267	1	4.00	Am	To	7.30	Am		
THU	13.6.19	1	8.00	Pm	To	12.00	Am		
307121		2	12.00	Am	To	3.00	Am		
307389	288	2	5.00	Am	To	8.00	Am		
FRI	14.6.19	2	8.00	Pm	To	12.00	Am		
307389		2	4.00	Am	To	8.00	Am		
307586	207								
SAT	15.6.19	2	8.00	Pm	To	12.00	Am		
307596		2	3.00	Am	To	7.30	Am		
307862	266								
SUN	16.6.19	2	8.00	Pm	To	12.00	Am		
307862		2	4.00	Am	To	8.00	Am		
308051	189								
MON	17.6.19	2	8.00	Pm	To	12.00	Am		
308051		2	4.00	Am	To	8.00	Am		
308256	205								
TUE	18.6.19	2	8.00	Pm	To	12.00	Am		
308256		2	4.00	Am	To	8.00	Am		
308465	203								
WED	19.6.19	2	8.00	Pm	To	12.00	Am		
308465		2	4.00	Am	To	8.00	Am		
308722	257								
THU	20.6.19	2	8.00	Pm	To	12.00	Am		
308722		2	4.00	Am	To	8.00	Am		
309002	280								

Day	Date	Puloxor	entions	Am	To	off	stand	F
FRI	20.6.19	2	8.00	Pm	To	12.00		
309002		2	4.00	Am	To	8.30		
309363	361							
SAT	22.6.19	2	8.00	Pm	To	12.00		
309363		2	4.00	Am	To	8.00		
309618	235							
SUN	23.6.19	2	8.00	Pm	To	12.00		
MON	24.6.19	1	8.00	Pm	To	12.00		
309618		2	12.00	Am	To	3.00		
310113	493	1	4.00	Am	To	6.00		
		2	6.00	Am	To	8.00		
TUE	25.6.19	1	8.00	Pm	To	12.00		
310113		2	12.00	Am	To	4.00		
310399	286	1	5.00	Am	To	8.00		
WED	26.6.19	1	8.00	Pm	To	12.00		
310399		2	12.00	Am	To	4.00		
310780	381	1	6.00	Am	To	8.00		
THU	27.6.19	2	8.00	Pm	To	12.00		
310780		1	12.00	Am	To	4.00		
311122	342	2	5.00	Am	To	8.00		
FRI	28.6.19	2	8.00	Pm	To	12.00		
311122		2	4.00	Am	To	8.00		
311351	229							
SAT	29.6.19							
SUN	30.6.19	2	8.00	Pm	To	12.00		
311351		2	4.00	Am	To	4.00		

Day	Date	Puloxan	on	time	Am	To	off time	Am
MON.	1.7.19	2	8.00	Pm	To	12.00	Pm	
31.7.60	1	2	4.00	Am	To	8.00	Am.	
31.7.60	125							
TUE	2.7.19	1	8.00	Pm	To	12.00	Am	
31.7.60	1	2	12.00	Am	To	4.00	Am.	
31.2.27	267	1	5.30	Am	To	8.00	Am	
WED	3.7.19	2	8.00	Pm	To	12.00	Am	
31.2.27	1	12.00	Am	To	4.00	Am		
31.2.32	305	2	6.00	Am	To	8.00	Am.	
THU	4.7.19	1	8.00	Pm	To	12.00	Am	
31.2.32	1	12.00	Am	To	4.00	Am		
31.2.59	259	1	5.00	Am	To	8.00	Am	
FRI	5.7.19	2	8.00	Pm	To	12.00	Am	
31.2.59	1	12.00	Am	To	4.00	Am		
31.2.835	244	2	5.00	Am	To	8.00	Am	
SAT	6.7.19	1	8.00	Pm	To	12.00	Am	
31.2.835	1	12.00	Am	To	4.00	Am		
31.3.148	313	1	5.00	Am	To	8.00	Am	
SUN	7.7.19	2	8.00	Pm	To	12.00	Am.	
31.8.148	1	12.00	Am	To	3.00	Am		
31.3.899	251	2	3.00	Am	To	6.00	Am.	
MON	8.7.19	1	8.00	Pm	To	12.00	Am	
31.3.899	1	12.00	Am	To	4.00	Am		
31.3.888	235	1	5.00	Am	To	8.00	Am	
TUE	9.7.19	2	8.00	Pm	To	12.00	Am	
31.3.888	1	12.00	Am	To	4.00	Am		
31.3.899	1	1.00	Am	To	4.00	Am		

1	Day	Date	PVLOS	on	time	Am	To	off	time
1	WED	10.7.19	1	8.00	Pm	To	12.00		
2			2	12.00	Am	To	4.00		
2	THU	11.7.19	2	8.00	Pm	To	12.00		
2	FRI	12.7.19	0	8.00	Pm	To	12.00		
2	313919		1	12.00	Am	To	4.00		
2	314656	737	2	4.00	Am	To	8.00		
2	SAT	13.7.19	2	8.00	Pm	To	12.00		
2	314656		1	12.00	Am	To	4.00		
2	315011	355	2	4.00	Am	To	7.00		
2	SUN	14.7.19	1	6.30	Pm	To	11.00		
2	315011		2	11.00	Pm	To	2.00		
2	315254	243	1	4.00	Am	To	8.00		
2	MON	15.7.19	1	9.00	Pm	To	12.00		
2	315254		2	12.00	Am	To	4.00		
2	315516	262	1	6.00	Am	To	8.00		
2	TUE	16.7.19	2	8.00	Pm	To	12.00		
2	315516		1	12.00	Am	To	4.00		
2	316087	571	2	5.30	Am	To	8.00		
2	THU	18.7.19	1	8.00	Pm	To	12.00		
2	316087		2	12.00	Am	To	4.00		
2	316640	34	1	5.00	Am	To	8.00		
2	FRI	19.7.19	2	8.00	Pm	To	12.00		
2	316640		1	12.00	Am	To	3.00		
2	316637	236	2	5.00	Am	To	8.00		

Day	Date	Pulox	ON-time	Am	TO	OFF-time	Am
SAT	20.7.19	2	8.06	Pm	TO	12.06	Am
313637		2	3.06	Am	TO	6.06	Am.
316804	167						
SUN	21.7.19	2	8.06	Pm	TO	1.06	Am.
MON	22.7.19	2	8.00	Pm	TO	12.00	Am.
		2	4.00	Am	TO	8.00	Am.
TUE	23.7.19	2	8.00	Pm	TO	12.00	Am
		2	4.00	Am	TO	8.00	Am
WED	24.7.19	2	8.00	Am	TO	12.00	Am
		2	4.00	Am	TO	8.00	Am
THU	25.7.19	2	8.00	Pm	TO	12.00	Am
		2	4.00	Am	TO	8.00	Am
FRI	26.7.19	2	8.00	Pm	TO	12.00	Am
		2	4.00	Am	TO	8.00	Am
SAT	27.7.19	2	8.00	Pm	TO	12.00	Am
		2	4.00	Am	TO	8.00	Am
SUN	28.7.19	2	8.00	Pm	TO	12.00	Am
316804		2	4.00	Am	TO	8.00	Am
I 7534	730						
MON	29.7.19	2	8.00	Pm	TO	12.00	Am
317534		2	5.00	Am	TO	8.00	Am.
317764	230						
TUE	30.7.19	2	8.00	Pm	TO	1.00	Am
317764		2	3.00	Am	TO	6.00	Am
318084	320	2	7.00	Am	TO	8.00	Am.

Day	Date	Pulovar	officium	Am	To	off time	Am
WED	31.7.19	2	8.00	Pm	To	12.00	Am
318084		2	3.00	Am	To	8.00	Am
318353	245 ✓						
THU	1.8.19	1	8.00	Pm	To	12.00	Am
318353		2	12.00	Am	To	4.00	Am
318795	442 ✓	1	4.00	Am	To	8.00	Am
FRI	2.8.19	2	8.00	Pm	To	12.00	Am
318795		1	12.00	Am	To	4.00	Am
319241	446 ✓	2	5.00	Am	To	8.00	Am
SAT	3.8.19	2	8.00	Pm	To	12.00	Am
319241		1	12.00	Am	To	4.00	Am
319764	523 ✓	2	5.00	Am	To	8.00	Am
SUN	4.8.19	1	8.00	Pm	To	12.00	Am
319764		2	12.00	Am	To	3.00	Am
320148	324	1	4.00	Am	To	8.00	Am
MON	5.8.19	2	8.00	Pm	To	12.00	Am
320148		1	12.00	Am	To	4.00	Am
320569	421	2	5.00	Am	To	8.00	Am
TUE	6.8.19	2	8.00	Pm	To	12.00	Am
320569		1	12.00	Am	To	3.00	Am
321026	457	2	5.00	Am	To	8.00	Am
THU	8.8.19	2	7.00	Am	To	10.30	Am
321026		1	10.30	Am	To	2.30	Am
		2	2.30	Pm			

Day	Date	Pulse	Year	on time	Am	To	off time	Am
FRI	9. 8. 19	1		8. 00	Pm	To	12. 00	Am.
321026		2		12. 00	Am	To	3. 00	Am.
321632	642	1		5. 00	Am	To	8. 00	Am.
SAT	10. 8. 19	2		8. 00	Pm	To	12. 00	Am
321638		1		12. 00	Am	To	4. 00	Am
321877	253	2		5. 00	Am	To	8. 00	Am
SUN	11. 8. 19	1		8. 00	Pm	To	12. 00	Am
321877		2		12. 00	Am	To	4. 00	Am.
122118	241	1		6. 00	Am	To	8. 00	Am.
MON	12. 8. 19			Leave				
TUE	13. 8. 19	1		8. 00	Pm	To	12. 00	Am.
WED	14. 8. 19	2		8. 00	Pm	To	12. 00	Am.
THU	15. 8. 19	1		8. 00	Pm	To	12. 00	Am
322118		2		4. 00	Am	To	8. 00	Am.
322410	232							
FRI	16. 8. 19	1		8. 00	Pm	To	12. 00	Am
322410		2		12. 00	Am	To	4. 00	Am
322501	331	1		5. 00	Am	To	8. 00	Am.
SAT	17. 8. 19	2		8. 00	Pm	To	12. 00	Am
322801		1		12. 00	Am	To	4. 00	Am
322995	194	2		5. 00	Am	To	8. 00	Am
SUN	18. 8. 19	1		8. 00	Pm	To	12. 00	Am
322995		2		12. 00	Am	To	4. 00	Am.
323271	276	1		4. 00	Am	To	8. 00	Am.
MON	19. 8. 19	1		8. 00	Am	To	12. 00	Pm.
				12. 00	Am	To	4. 00	Pm.

DAY	Date	polo	Yar	on time	Am	To	off time	Am
TUE	20.8.19	2	8.00	Pm	To	12.00	Am	
323271	354	1	12.00	Am	To	4.00	Am	
323625								
WED	21.8.19	2	8.00	Pm	To	7.00	Pm	
323625	207	1	8.00	Pm	To	12.00	Am	
323922		2	12.00	Am	To	4.00	Am	
		1	5.00	Am	To	8.00	Am	
THU	22.8.19	2	8.00	Pm	To	12.00	Am	
323922	279	1	12.00	Am	To	4.00	Am	
324200		2	5.00	Am	To	8.00	Am	
FRI	23.8.19	1	8.00	Pm	To	12.00	Am	
324200	236	2	12.00	Am	To	4.00	Am	
324436		1	5.00	Am	To	8.00	Am	
SAT	24.8.19	1	8.00	Pm	To	12.00	Am	
324436	232	2	12.00	Am	To	3.00	Am	
324718		1	4.00	Am	To	8.00	Am	
SUNDAY	26.8.19	2	8.00	Am	To	12.00	Pm	
324718		1	12.00	Pm	To	3.00	Pm	
324974		2	4.00	Pm	To	7.00	Pm	
TUE	27.8.19	2	8.00	Am	To	12.00	Pm	
324974	236	1	12.00	Pm	To	3.00	Pm	
325230		2	4.00	Pm	To	7.30	Pm	
WED	28.8.19	1	8.00	Am	To	12.00	Pm	
325230	1231	2	12.00	Pm	To	3.30	Am	
325965		1	4.00	Pm	To	8.00	Am	
325965								

Day	Date	PuLoyar	on. time	Am	To	OFF time	Am
THU	29.8.19	2	8.00	Am	To	12.00	Pm
325461		1	12.00	Pm	To	4.00	Pm
325696	235	2	5.00	Pm	To	8.00	Pm
FRI	30.8.19	1	8.00	Am	To	12.00	Am
SAT	31.8.19	1	8.00	Am	To	12.00	Pm
325696		2	12.00	Pm	To	4.00	Pm
325945	249	1	6.00	Pm	To	8.00	Pm
		2	9.00	Pm	To	12.00	Am
325945		1	12.00	Am	To	4.00	Am
326163	219	2	5.00	Am	To	8.00	Am
SUN	1.9.19	1	8.00	Pm	To	12.00	Am
326163		2	12.00	Am	To	4.00	Am
326406	243	1	5.00	Am	To	8.00	Am
MON	2.9.19	1	9.00	Am	To	12.00	Pm
		2	12.00	Pm	To	3.00	Pm
		1	4.00	Pm	To	7.00	Pm
TUE	3.9.19	2	9.00	Pm	To	12.00	Am
326406		1	12.00	Am	To	4.00	Am
326776	370	2	5.00	Am	To	8.00	Am
WED	4.9.19	1	8.00	Pm	To	12.00	Am
326776		2	12.00	Am	To	4.00	Am
326969	193	1	4.00	Am	To	8.00	Am
THU	5.9.19	2	8.00	Pm	To	12.00	Am
326969		1	12.00	Am	To	4.00	Am
327244	275	2	5.00	Am	To	8.00	Am

Day	Date	Polarcar	on	fiand	Am	To	off	fiand	
FRI	6. 9. 19	2	8.	00	Pm	To	12.	00	
327244	251	1	12.	00	Am	To	4.	00	
327596		2	5.	00	Am	To	8.	00	
SAT	7. 9. 19	1	8.	00	Pm	To	12.	00	
327596	252	2	12.	00	Am	To	4.	00	
327848		1	5.	00	Am	To	8.	00	
SUN	8. 9. 19	2	8.	00	Pm	To	12.	00	
327848	241	1	12.	00	Am	To	4.	00	
328089		2	5.	00	Am	To	8.	00	
MON	9. 9. 19	1	8.	00	Pm	To	12.	00	
328089	277	2	12.	00	Am	To	4.	00	
328366		1	5.	00	Am	To	8.	00	
TUE	10. 9. 19	2	8.	00	Pm	To	12.	00	
328366	298	1	12.	00	Am	To	4.	00	
328664		2	5.	00	Am	To	8.	00	
SUN	15. 9. 19	1	8.	00	Pm	To	12.	00	
328664	553	2	12.	00	Am	To	4.	00	
329217		1	4.	00	Am	To	8.	00	
MON	16. 9. 19	2	8.	00	Am	To	12.	00	
		1	12.	00	Am	To	4.	00	
		2	5.	00	Pm	To	8.	00	
TUE	17. 9. 19	1	8.	00	Am	To	12.	00	
		2	12.	00	Pm	To	3.	00	
		2	4.	00	Pm	To	7.	30	
WED.	18. 9. 19	2	8.	00	Am	To	12.	00	
329217	407	1	2.	00	Pm	To	5.	00	
329624		2	5.	00	Pm	To	7.	30	

Day	Date	Pull yard	on time	Am	To off	Am.
Fri	9. 8. 19	1	8. 00	Pm	To 12. 00	Am.
321026		2	12. 00	Am	To 3. 00	Am.
321638	1642	1	5. 00	Am	To 8. 00	Am.
SAT	10. 8. 19	2	8. 00	Pm	To 12. 00	Am
321638		1	12. 00	Am	To 4. 00	Am
321877	239	2	5. 00	Am	To 8. 00	Am
SUN	11. 8. 19	1	8. 00	Pm	To 12. 00	Am
321877		2	12. 00	Am	To 4. 00	Am.
322118	241	1	5. 00	Am	To 8. 00	Am.
MON	12. 8. 19		Leave.			
TUE	13. 8. 19	1	8. 00	Pm	To 12. 00	Am
WED	14. 8. 19	2	8. 00	Pm	To 12. 00	Am.
THU	15. 8. 19	1	8. 00	Pm	To 12. 00	Am
322118		2	4. 00	Am	To 8. 00	Am.
322410	292					
Fri	16. 8. 19	1	8. 00	Pm	To 12. 00	Am
322410		2	12. 00	Am	To 4. 00	Am.
322801	391	1	5. 00	Am	To 8. 00	Am.
SAT	17. 8. 19	2	8. 00	Pm	To 12. 00	Am
322801		1	12. 00	Am	To 4. 00	Am
322995	194	2	5. 00	Am	To 8. 00	Am
SUN	18. 8. 19	1	8. 00	Pm	To 12. 00	Am
322995		2	12. 00	Am	To 4. 00	Am.
323271	276	1	4. 00	Am	To 8. 00	Am.
MON	19. 8. 19	1	8. 00	Am	To 12. 00	Pm.
			12. 00	Am	To 4. 00	Pm.

J. Danner
2/11/20

Miller

h

h

h

h

h

Day	Date	Puloxan	on/leave	Am	To	off time	Am
WED.	31.7.19	2	8.00	Pm	To	12.00	Am
318084		2	3.00	Am	To	8.00	Am
318383	269 ✓						
THU	1.8.19	1	8.00	Pm	To	12.00	Am
318353		2	12.00	Am	To	4.00	Am
318795	442 ✓	1	4.00	Am	To	8.00	Am
FRI	2.8.19	2	8.00	Pm	To	12.00	Am
318795		1	12.00	Am	To	4.00	Am
319241	446 ✓	2	5.00	Am	To	8.00	Am
SAT	3.8.19	2	8.00	Pm	To	12.00	Am
319942		1	12.00	Am	To	4.00	Am
319764	523 ✓	2	5.00	Am	To	8.00	Am
SUN	4.8.19	1	8.00	Pm	To	12.00	Am
319764		2	12.00	Am	To	3.00	Am
320148	324	1	4.00	Am	To	8.00	Am
MON.	5.8.19	2	8.00	Pm	To	12.00	Am
320148		1	12.00	Am	To	4.00	Am
320569	421	2	5.00	Am	To	8.00	Am
TUE	6.8.19	2	8.00	Pm	To	12.00	Am
320569		1	12.00	Am	To	3.00	Am
321026	457	2	5.00	Am	To	8.00	Am
Day. Shift							
THU	8.8.19	2	7.00	Am	To	10.30	Am
321026		1	10.30	Am	To	2.30	Am
		2	2.30	Pm			

Day	Date	Polygar	on time	Am	To	off time	Am
TUE	20.8.19	2.	8. 00	Pm	To	12. 00	Am
323271	354	1	12. 00	Am	To	4. 00	Am
323625							
WED	21.8.19	2 <small>opm 12.00 to 2.00</small>	8. 00	Pm	To	7. 00	Pm.
323625	237	1	8. 00	Pm	To	12. 00	Am.
323922		2	12. 00	Am	To	4. 00	Am.
		1	5. 00	Am	To	8. 00	Am.
THU	22.8.19	2	8. 00	Pm	To	12. 00	Am
323922	279	1	12. 00	Am	To	4. 00	Am
324200		2.	5. 00	Am	To	8. 00	Am.
FRI	23.8.19	1	8. 00	Pm	To	12. 00	Am
324200	236	2	12. 00	Am	To	4. 00	Am
324436		1	5. 00	Am	To	8. 00	Am
SAT	24.8.19	1	8. 00	Pm	To	12. 00	Am
324436	222	2	12. 00	Am	To	3. 00	Am
324718		1	4. 00	Am	To	8. 00	Am.
SUN	26.8.19	2.	8. 00	Am	To	12. 00	Pm
324718		1	12. 00	Pm	To	3. 00	Pm
324974		2.	4. 00	Pm	To	7. 00	Am
TUE	27.8.19	2	8. 00	Am	To	12. 00	Pm
324974	256	1	12. 00	Pm	To	3. 00	Pm
325230		2.	4. 00	Pm	To	7. 30	Pm
WED	28.8.19	1	8. 00	Am	To	12. 00	Pm
325230	231	2	12. 00	Pm	To	3. 30	Am
325461		1	4. 00	Pm	To	8. 00	Am.
325628							

Day.	Date.	puLoyar	on. from	Am	To	OFF. time	Am
THU	29.8.19	2.	8.00	Am	To	12.00	Pm
25461		1	12.00	Pm	To	4.00	Pm
25696	235	2	5.00	Pm	To	8.00	Pm
FRI	30.8.19	1	8.00	Am	To	12.00	Am
SAT	31.8.19	1	8.00	Am	To	12.00	Pm
25696		2	12.00	Pm	To	4.00	Pm
25945	249	1	6.00	Pm	To	8.00	Pm
		2.	9.00	Pm	To	12.00	Am
25945		1	12.00	Am	To	4.00	Am
26163	218	2	5.00	Am	To	8.00	Am.
SUN.	1.9.19	1	8.00	Pm	To	12.00	Am
26163		2	12.00	Am	To	4.00	Am
26406	243	1	5.00	Am	To	8.00	Am
MON.	2.9.19	1	9.00	Am	To	12.00	Pm
		2	12.00	Pm	To	3.00	Pm
		1	4.00	Pm	To	7.00	Pm
TUE	3.9.19	2	9.00	Pm	To	12.00	Am
26406		1	12.00	Am	To	4.00	Am
26776	370	2.	5.00	Am	To	8.00	Am.
WED.	4.9.19	1	8.00	Pm	To	12.00	Am
26776		2	12.00	Am	To	4.00	Am
326969	193	1	4.00	Am	To	8.00	Am.
THU	5.9.19	2	8.00	Pm	To	12.00	Am
26969		1	12.00	Am	To	4.00	Am
27244	275	2.	5.00	Am	To	8.00	Am.

Day.	Date	Puloxan	on file	am	To	off file	am
FRI	6.9.19	2	8.00	Pm	To	12.00	Am
327244	352	1	12.00	Am	To	4.00	Am
327596		2	5.00	Am	To	8.00	Am
SAT	7.9.19	1	8.00	Pm	To	12.00	Am
327596	252	2	12.00	Am	To	4.00	Am
327848		1	5.00	Am	To	8.00	Am
SUN	8.9.19	2	8.00	Pm	To	12.00	Am
327248	241	1	12.00	Am	To	4.00	Am
328089		2	5.00	Am	To	8.00	Am
MON	9.9.19	1	8.00	Pm	To	12.00	Am
328089	277	2	12.00	Am	To	4.00	Am
328366		1	5.00	Am	To	8.00	Am
TUE	10.9.19	2	8.00	Pm	To	12.00	Am
328366	292	1	12.00	Am	To	4.00	Am
328664		2	5.00	Am	To	8.00	Am
SUN	15.9.19	1	8.00	Pm	To	12.00	Am
328664	553	2	12.00	Am	To	4.00	Am
329217		1	4.00	Am	To	8.00	Am
MON	16.9.19	2	8.00	Am	To	12.00	Am
		1	12.00	Am	To	4.00	Am
		2	5.00	Pm	To	8.00	Pm
TUE	17.9.19	1	8.00	Am	To	12.00	Pm
		2	12.00	Pm	To	3.00	Pm
		1	4.00	Pm	To	7.30	Pm
WED	18.9.19	2	8.00	Am	To	12.00	Pm
329217	407	1	2.00	Pm	To	5.00	Pm
329624		2	5.00	Pm	To	7.30	Pm

Day	Date	PV Loyer	on time	Am	To	off time	Am
THU	19.9.19	1	8.00	Am	TO	12.00	Pm
19624		2	12.00	Pm	TO	4.00	Pm
29833	209	1	5.00	Pm	TO	8.00	Pm
FRI	20.9.19	2	8.00	Am	TO	12.00	Pm
29833		1	12.00	Pm	TO	4.00	Pm
30030	197	2	5.00	Pm	TO	8.00	Pm
SAT	21.9.19	1	8.00	Am	TO	12.00	Pm
30030		2	12.00	Pm	TO	4.00	Pm.
30304	274	1	4.00	Pm	TO	8.00	Pm.
MON.	23.9.19	2	8.00	Am	TO	12.00	Pm
30304		1	12.00	Pm	TO	4.00	Pm
0479	175	2	5.00	Pm	TO	8.00	Pm
TUE	24.9.19	1	8.00	Am	TO	12.00	Pm.
30479		2	12.00	Pm	TO	4.00	Pm
30712	233	1	5.00	Pm	TO	8.00	Pm.
WED	25.9.19	2	8.00	Am	TO	12.00	Pm
30712		1	12.00	Pm	TO	4.00	Pm
30947	235	2	5.00	Pm	TO	8.00	Pm
THU	26.9.19	1	8.00	Pm	TO	12.00	Am
30947		2	12.00	Am	TO	4.00	Am
31202	255	1	5.30	Am	TO	8.00	Am
FRI	27.9.19	2	8.00	Pm	TO	12.00	Am
31202		1	12.00	Am	TO	4.00	Am
31522	320	2	4.00	Am	TO	8.00	Am
SAT	28.9.19	1	8.00	Pm	TO	12.00	Am
31522		2	12.00	Am	TO	4.00	Am
31767	245	1	4.00	Am	TO	6.00	Am

Day	Date	PULoyar	on time	Am	To	off time	Ar
SUN.	29.9.19	1	8.00	Pm	To	12.00	Pm
331767	233	2	12.00	Am	To	4.00	Am
332000		1	5.00	Am	To	8.00	Am
MON.	30.9.19	2	8.00	Pm	To	12.00	Am
332000	278	1	12.00	Am	To	4.30	Am
332278		2.	5.00	Am	To	8.00	Am
TUE	1.10.19	1	8.00	Pm	To	12.00	Am
332278	235	2	12.00	Am	To	4.00	Am
332513		1	5.00	Am	To	8.00	Am
WED.	2.10.19	2	8.00	Pm	To	12.00	Am
332513	284	1	12.00	Am	To	4.00	Am
332797		2	4.30	Am	To	8.00	Am
THU.	3.10.19	1	8.00	Pm	To	12.00	Am
332797	222	2	12.00	Am	To	4.00	Am
333019		1	4.00	Am	To	8.00	Am
FRI	4.10.19	2	8.00	Pm	To	12.00	Am
333019	272	1	12.00	Am	To	4.00	Am
333291		2.	6.00	Am	To	8.00	Am
SAT	5.10.19	1	8.00	Pm	To	12.00	Am
333291	244	2	12.00	Am	To	4.00	Am
333535		1	6.00	Am	To	8.00	Am
SUN	6.10.19	2.	8.00	Pm	To	12.00	Am
333535	210	1	12.00	Am	To	4.00	Am
333745		2	5.00	Am	To	7.30	Am
MON	7.10.19	Auphar Pooda			Leeru		

Day.	Date	Pulovers	On-time	Am	To	Off-time	Am
TUE	8.10.19	1	8.00	Pm	To	12.00	Am
33745	227	2	12.00	Am	To	4.00	Am
33972		1	6.00	Am	To	8.00	Am
WED	9.10.19	2	8.00	Pm	To	12.00	Am
33972	281	1	12.00	Am	To	4.00	Am
34253		2	5.00	Am	To	8.00	Am
THU	10.10.19	1	8.00	Pm	To	12.00	Am
34253	284	2	12.00	Am	To	4.00	Am
34537		1	6.00	Am	To	8.00	Am
FRI	11.10.19	2	8.00	Pm	To	12.00	Am
34537	244	1	12.00	Am	To	4.00	Am
34781		2	6.00	Am	To	8.00	Am
SAT	12.10.19	2	8.00	Pm	To	12.00	Am
34781	192	1	12.00	Am	To	4.00	Am
34973		2	5.00	Am	To	8.00	Am
SUN	13.10.19	Leave					
MON	14.10.19	Motor. WORKS.					
TUE	15.10.19	2	8.00	Pm	To	12.00	Am
34973	455	2	12.00	Am	To	4.00	Am
35428		1	5.00	Am	To	8.00	Am
WED	16.10.19	2	8.00	Pm	To	12.00	Am
35428	233	1	12.00	Am	To	4.00	Am
35661		2	5.00	Am	To	8.00	Am
THU	17.10.19	1	8.00	Pm	To	12.00	Am
35661	208	2	12.00	Am	To	4.00	Am
35865		1	5.00	Am	To	8.00	Am

Day	Date	Puloxar	on	time	Am	To	off	time	Am
FRI	18.10.19	2	8.	00	Pm	TO	12.	00	Am
335865	250	1	12.	00	Am	TO	4.	00	Am
336115		2	5.	00	Am	TO	8.	00	Am
SAT	19.10.19	1	8.	00	Pm	TO	12.	00	Am
336115	214	2	12.	00	Am	TO	4.	00	Am
336329		1	5.	00	Am	TO	8.	00	Am
MON	20.10.19	2	8.	00	Pm	TO	12.	00	Am
		1	12.	00	Am	TO	4.	00	Am
WTHU	24.10.19	2	8.	00	Am	TO	12.	00	Pm
336329	454	1	12.	00	Pm	TO	5.	00	Pm
336783		2	5.	00	Pm	TO	8.	00	Pm
FRI	25.10.19	1	8.	00	Am	TO	12.	00	Am
336783	179	2	12.	00	Pm	TO	5.	00	Pm
336962		1	5.	00	Pm	TO	6.	00	Pm
SAT	26.10.19	2	8.	00	Am	TO	12.	00	Pm
		1	12.	00	Pm	TO	4.	00	Pm
		1	5.	00	Pm	TO	8.	00	Pm
TUE	29.10.19	1	8.	00	Am	TO	12.	00	Pm
336962	341	2	12.	00	Pm	TO	4.	00	Pm
337303		1	5.	00	Pm	TO	6.	30	Pm
THU	31.10.19	2	8.	00	Am	TO	12.	00	Pm
337303	224	1	12.	00	Pm	TO	4.	00	Pm
337527		2	4.	00	Pm	TO	8.	00	Pm
FRI	1.11.19	2	8.	00	Am	TO	12.	00	Am
337527	213	1	12.	00	Pm	TO	4.	00	Pm
337740		2	5.	00	Pm	TO	8.	00	Pm

Day	Date	Puloyar	off. time	Am	TO	off. time	Am.
Sat	2. 11. 19	1	8. 00	Am	TO	12. 00	Pm
3 7740	175	2	12. 00	Pm	TO	3. 00	Pm
3 7915		1	3. 00	Pm	TO	5. 30	Pm
mon.	4. 11. 19	2	8. 00	Am	TO	12. 00	Pm
3 7915	232	1	12. 00	Pm	TO	4. 00	Pm
3 8147		2	5. 00	Pm	TO	8. 00	Pm.
TUE	5. 11. 19	2	8. 00	Am	TO	12. 00	Pm
3 8147		1	12. 00	Pm	TO	4. 00	Pm
3 8355		2	5. 00	Pm	TO	8. 00	Pm
WED	6. 11. 19	1	8. 00	Am	TO	12. 00	Pm
3 8355	208	2	12. 00	Pm	TO	4. 00	Pm
3 8342		1	4. 00	Pm	TO	8. 00	Pm
THE	7. 11. 19	-	Sadaavhu.		Sadaavhu.		
FRI	8. 11. 19	2	8. 00	Am	TO	12. 00	Pm
3 8542	237	1	12. 00	Pm	TO	4. 00	Pm
3 8779		2	4. 00	Pm	TO	8. 00	Pm
SAT	SUN.	1 month	L. en. all.				
TUE.	12. 11. 19	2	8. 00	Pm	TO	12. 00	Pm
3 8779	364	1	12. 00	Pm	TO	4. 00	Pm
3 9143		2	5. 00	Pm	TO	8. 00	Pm
WED.	13. 11. 19	1	8. 00	Am	TO	12. 00	Pm
3 9143	229	2	12. 00	Pm	TO	4. 00	Pm
3 9372		1	4. 00	Pm	TO	8. 00	Pm
THU	14. 11. 19	2	8. 00	Am	TO	12. 00	Pm
3 9372	194	1	12. 00	Pm	TO	4. 00	Pm
3 9566		2	5. 00	Pm	TO	8. 00	Pm

Day	Date	Polo Year	one figure	Am	To	off figure	Am
FRI	15.11.19	2	8.00	Am	To	12.00	Pm
339566	195	1	12.00	Pm	To	4.00	Pm
339761		2	4.00	Pm	To	6.00	Pm
MON	18.11.19	1	8.00	Am	To	12.00	Pm
339761	286	2	12.00	Pm	To	4.00	Pm
340047		1	5.00	Pm	To	8.00	Pm
TUE	19.11.19	2	8.00	Am	To	12.00	Pm
340047	286	1	12.00	Pm	To	4.00	Pm
340285		2	5.00	Pm	To	8.00	Pm
WED	20.11.19	1	8.00	Am	To	12.00	Pm
340285	215	2	12.00	Pm	To	4.00	Pm
340500		1	5.00	Pm	To	8.00	Pm
THU	21.11.19	2	8.00	Am	To	12.00	Pm
340500	373	1	12.00	Pm	To	4.00	Pm
340873		2	5.00	Pm	To	8.00	Pm
FRI	22.11.19	1	8.00	Am	To	12.00	Pm
340873	292	2	12.00	Pm	To	4.00	Pm
341121		1	4.00	Pm	To	8.00	Pm
SAT	23.11.19	1	8.00	Am	To	12.00	Pm
340873	1121	2	12.00	Pm	To	4.00	Pm
3401121		1	5.00	Pm	To	8.00	Pm
MON	25.11.19	2	8.00	Am	To	12.00	Pm
3401121	1355	1	12.00	Pm	To	4.00	Pm
341355		2	5.00	Pm	To	8.00	Pm
TUE	26.11.19	2	8.00	Am	To	12.00	Pm
341355	225	1	12.00	Pm	To	4.00	Pm
341630		2	5.00	Pm	To	8.00	Pm

Day	Date	Puloyar	On time	Am	To	Off time	Am
WED.	27.11.19	1	8.00	Am	To	12.00	Pm
41530		2	12.00	Pm	To	4.00	Pm
41818	288	1	5.00	Pm	To	8.00	Pm
THU	28.11.19		8.00	Am	To	12.00	Pm
FRI	29.11.19	1	8.00	Am	To	12.00	Pm
41818		2	12.00	Pm	To	4.00	Pm
42085	267	1	4.00	Pm	To	8.00	Pm
SAT	30.11.19	at Old De	Brohman				
mon	2.12.19	2	8.00	Am	To	12.00	Pm
42085		1	12.00	Pm	To	4.00	Pm
42298	213	2	5.00	Pm	To	8.00	Pm
TUE	3.12.19	1	8.00	Am	To	Leave	
FRI	27.12.19	2	9.00	Am	To	12.00	Pm
2298		1	12.00	Pm	To	3.00	Pm
4740	2442	2	3.00	Pm	To	7.00	Pm
SAT	28.12.19	1	6.00	Am	To	10.00	Am
4740		2	10.00	Am	To	2.00	Pm
45018	272	1	2.00	Pm	To	5.00	Pm
		2	5.00	Pm	To	8.00	Pm
MON.	30.12.19	1	8.00	Am	To	12.00	Pm
45018		2	12.00	Pm	To	3.00	Pm
45356	358	1	4.00	Pm	To	8.00	Pm
TUE	31.12.19	2	8.00	Am	To	12.00	Pm
5356		1	12.00	Pm	To	4.00	Pm
5581	225	2	5.00	Pm	To	8.00	Pm

Day	Date	Proctor	on time	Am	To	off time	Am
WED	1. 1. 20	1	8. 00	Am	To	12. 00	Pm
345581		2	12. 00	Pm	To	3. 00	Pm
345770	189	1	4. 30	Pm	To	7. 30	Pm
THU	2. 1. 20	2	8. 00	Am	To	12. 00	Pm
345770		1	12. 00	Pm	To	4. 00	Pm
346051	281	2	5. 00	Pm	To	8. 00	Pm
FRI	3. 1. 20	1	8. 00	Am	To	12. 00	Pm
346051		2	12. 00	Pm	To	4. 00	Pm
346229	178	1	5. 00	Pm	To	7. 00	Pm
SAT	4. 1. 20	2	8. 00	Am	To	12. 00	Pm
346229		1	12. 00	Pm	To	4. 00	Pm
346445	216	2	5. 00	Pm	To	8. 00	Pm
SUN	5. 1. 20	1	8. 00	Am	To	12. 00	Pm
346445		2	12. 00	Pm	To	4. 00	Pm
346631	186	1	4. 00	Pm	To	6. 00	Pm
MON	6. 1. 20	2	8. 00	Am	To	12. 00	Pm
346631		1	12. 00	Pm	To	4. 00	Pm
346845	214	2	5. 00	Pm	To		
TUE	7. 1. 20	1	8. 00	Am	To	12. 00	Pm
346845		2	12. 00	Pm	To	4. 00	Pm
347050	265	1	5. 00	Pm	To	7. 30	Pm
WED	8. 1. 20	2	8. 00	Am	To	12. 00	Pm
347050		1	12. 00	Pm	To	4. 00	Pm
347290	240	2	6. 00	Pm	To	8. 00	Pm
THE	9. 1. 20	1	5. 00	Pm	To	8. 00	Pm

Day	Date	Player	on	time	Am	To	off	time	Am
FRI	10.1.20	2.	8.	00	Am	To	12.	00	Pm
347290		1	12.	00	Pm	To	4.	00	Pm
347614	324	2	5.	00	Pm	To	7.	30	Pm
SAT	11.1.20	1	8.	00	Am	To	12.	00	Pm
347614		2	12.	00	Pm	To	4.	00	Pm.
347874	260	1	6.	00	Pm	To	8.	00	Pm.
SUN	12.1.20	2	8.	00	Am	To	12.	00	Pm
347874		1	12.	00	Pm	To	4.	00	Pm
348103	229	2	5.	00	Pm	To	7.	30	Pm.
mon	13.1.20	1	8.	00	Am	To	12.	00	Pm
348103		2	12.	00	Pm	To	4.	00	Pm
348350	247	1	5.	00	Pm	To	8.	15	Pm.
TUE	14.1.20	2	8.	00	Am	To	12.	00	Pm
		1	12.	00	Pm	To	4.	00	Pm.
WED.	15.1.20		Leave						
THU	16.1.20	2	8.	00	Am	To	12.	00	Pm
348350		1	12.	00	Pm	To	4.	00	Pm
348780	430	2.	4.	00	Pm	To	6.	00	Pm
FRI	17.1.20	2.	8.	00	Am	To	12.	00	Pm
		1	12.	00	Pm	To	4.	00	Pm.
SAT.	18.1.20	1	8.	00	Am	To	12.	00	Pm
348780		2	12.	00	Pm	To	4.	00	Pm.
349193	413	1	5.	00	Pm	To	7.	30	Pm.
SUN	19.1.20	2.	8.	00	Am	To	12.	00	Pm.
349193		1	12.	00	Pm	To	4.	00	Pm
349386	193	2	5.	00	Pm	To	7.	00	Pm.

1 Day	Duete	Puloyas	on time	Am	To	off time	On
MON	20.1.20	1	8.00	Am	To	12.00	Pm
3349386		2	12.00	Pm	To	4.00	Pm
3349609	223	1	5.00	Pm	To		
TUE	21.1.20	2	8.00	Am	To	12.00	Pm
3349609		1	12.00	Pm	To	4.00	Pm
3849834	225	2	5.00	Pm	To	7.30	Pm
WED	22.1.20	1	8.00	Am	To	12.00	Pm
3349834		2	12.00	Pm	To	4.00	Pm
3250054	220	1	5.00	Pm	To	8.00	Pm
THU	23.1.20	2	8.00	Am	To	12.00	Pm
3350054		1	12.00	Pm	To	4.00	Pm
3350340	226	2	5.00	Pm	To	8.00	Pm
FRI	24.1.20	1	8.00	Am	To	12.00	Pm
3350340		2	12.00	Pm	To	4.00	Pm
3350583	243	1	5.00	Pm	To	8.00	Pm
SAT	25.1.20	2	8.00	Am	To	12.00	Pm
3350583		1	12.00	Pm	To	4.00	Pm
3350845	262	2	5.00	Pm	To	8.00	Pm
MON	27.1.20	1	8.00	Am	To	12.00	Pm
3350845		2	12.00	Pm	To	4.00	Pm
3351089	244	1	5.00	Pm	To	8.30	Pm
TUE	28.1.20	2	8.00	Am	To	12.00	Pm
3351089		1	12.00	Pm	To	4.00	Pm
3351335	246	2	5.00	Pm	To	8.00	Pm
WED	29.1.20	1	8.00	Am	To	12.00	Pm
351335		2	12.00	Pm	To	4.00	Pm
351565	230	1	5.00	Pm	To	8.30	Pm

Day.	Date.	PV/Year	on time	Am	To	off time	Am.
THU.	30.1.2020	2.	8.00	Am	To	12.00	Pm
351565		1	12.00	Pm	To	4.00	Pm
351805	240	2	5.00	Pm	To	8.50	Pm
FRI	31.1.2020	1	8.00	Am	To	12.00	Pm
351805		2	12.00	Pm	To	4.00	Pm
352020	215	1	5.00	Pm	To	8.00	Pm
X		X					
SAT	1.2.2020	2.	8.00	Am	To	12.00	Pm
352020		1	12.00	Pm	To	4.00	Pm
352290	270	2	5.00	Pm	To	8.00	Pm
MON.	3.2.2020	1	8.00	Am	To	12.00	Pm.
352290		2.	12.00	Pm	To	4.00	Pm
352584	294	1	5.00	Pm	To	8.00	Pm.
TUE	4.2.2020	2	8.00	Pm	To	12.00	Pm
352584		1	12.00	Pm	To	4.00	Pm
352836	252	2.	5.00	Pm	To	8.00	Pm
WED.	5.2.2020	1	8.00	Am	To	12.00	Pm
352836		2	12.00	Pm	To	4.00	Pm
353067	231	1	5.00	Pm	To	8.00	Pm
THU	6.2.2020	2	8.00	Am	To	12.00	Pm
353067		1	12.00	Pm	To	4.00	Pm
353324	257	2	5.00	Pm	To	8.15	Pm
(FRI) Tank clean - Vaktar TEST: new motor fitting 7.2.2020							
SAT	8.2.2020	2	8.00	Am	To	12.00	Pm
353324		1	12.00	Pm	To	4.00	Pm
353697	373	2.	5.00	Pm	To	7.30	Pm

Day	Date	PO/LO/YES	on-time	Am	To	off-time	Am
MON	10.2.2020	1	7.00	Am	TO	11.00	Am
353697	300	2	11.00	Am	TO	3.00	Pm
353997		1	5.00	Pm	TO	7.30	Pm
TUE	11.2.2020	2	8.00	Am	TO	12.00	Pm
353997	254	1	12.00	Pm	TO	3.00	Pm
354251		2	4.00	Pm	TO	8.00	Pm
WED	12.2.2020	1	8.00	Am	TO	12.00	Pm
354251	272	2	12.00	Pm	TO	3.00	Pm
354523		1	5.00	Pm	TO	8.00	Pm
THU	13.2.2020	1	8.00	Am	TO	12.00	Pm
354529	259	2	12.00	Pm	TO	4.00	Pm
354784		1	5.00	Pm	TO	8.00	Pm
FRI	14.2.2020	2	8.00	Am	TO	12.00	Pm
354784	249	1	12.00	Pm	TO	4.00	Pm
355066		2	5.00	Pm	TO	8.00	Pm
SAT	15.2.2020	1	5.00	Pm	TO		
SUN	16.2.2020	Leave VU		-	-	-	
MON	17.2.2020	2	8.00	Am	TO	12.00	Pm
355066	PK Day/Dufi	1	12.00	Pm	TO	4.00	Pm
355417		2	5.00	Pm	TO	8.00	Pm
NIGHT	Dufi (Am)	1	9.00	Pm	TO	12.00	Pm
355417	512	2	12.00	Pm	TO	4.00	Pm
355629		1	5.00	Pm	TO	8.00	Pm
TUE	18.2.2020	2	8.00	Am	TO	12.00	Pm
355629	PK Day/Dufi	1	12.00	Pm	TO	4.00	Pm
		2	5.00	Pm	TO	8.00	Pm

Day.	Date	FULCRON.	off home	Am	To	off home	Am.
TUE	18.2.2020	1	8.00	Pm	To	12.00	Pm
355629	Night Duty	2	12.00	Am	To	4.00	Am
356088	453	1	5.00	Am	To	8.00	Am.
WED	19.2.2020	2	8.00	Am	To	12.00	Pm
356088	213	1	12.00	Pm	To	4.00	Pm
356331	213	2	4.00	Pm	To	3.00	Pm.
356331	Am. Night	1	8.00	Pm	To	12.00	Pm
356553	222	2	12.00	Am	To	4.00	Am
356553	222	1	4.00	Am	To	8.00	Am
THU	20.2.2020	Weekly					
FRI	21.2.2020	1	6.00	Am	To	10.00	Am
356553	367	2	10.00	Am	To	2.00	Pm
356820	367	1	5.00	Pm	To	8.00	Pm
SAT	22.2.2020	2	8.00	Am	To	12.00	Pm
356920	473	1	12.00	Pm	To	3.30	Pm
357393	473	2	5.00	Pm	To	8.00	Pm
SUN	23.2.2020	2	8.00	Am	To	12.00	Pm
357393	462	1	12.00	Pm	To	4.00	Pm
357855	462	2	5.00	Pm	To	8.00	Pm
MON.	24.2.2020	2	8.00	Am	To	12.00	Pm.
		1	12.00	Pm	To	4.00	Pm.
		2	5.00	Pm	To	8.00	Pm
		1	8.00	Pm	To	12.00	Am
		2	12.00	Am	To	3.00	Am
		1	4.00	Am	To	6.00	Am
TUE	25.2.2020	1	8.00	Am	To	12.00	Pm
		2	12.00	Pm	To	4.00	Pm
		1	4.00	Pm	To	8.00	Pm.

Day	Date	POL/PRO	on/off	Am	To	off/line
357555	1425	2	2.00	Pm	To	12.00
358980		2	12.00	Am	To	4.00
		2	5.00	Am	To	8.00
WED.	26.2.2020	1				
358980	1478	1	8.00	Am	To	12.00
358159		2	12.00	Pm	To	4.00
		1	5.00	Pm	To	8.00
THU	27.2.2020	1	8.00	Am	To	12.00
358159	389	2	12.00	Pm	To	2.00
358548		1	5.00	Pm	To	8.00
FRI	28.2.2020	2	8.00	Pm	To	12.00
358548	707	1	12.00	Am	To	4.00
360255		2	5.00	Am	To	8.00
SAT	29.2.2020	1	8.00	Pm	To	
360255						
WED.	11.3.2020	2 PK night	2.00	Pm	To	5.00
360789		1	5.00	Pm	To	9.00
		2	9.00	Pm	To	12.00
		1	12.00	Am	To	4.00
		2	4.00	Am	To	8.00
THU	12.3.2020	1 Am shift	8.00	Am	To	12.00
360789	376	2 Day shift	12.00	Pm	To	4.00
361134		1	4.00	Pm	To	8.00
	PK night	2	8.00	Pm	To	12.00
		1	12.00	Am	To	4.00
		2	4.00	Am	To	8.00
FRI	13.3.2020	1	9.00	Am	To	12.00
361134	Am. Day shift	2	12.00	Pm	To	4.00
		1	5.00	Pm	To	8.00

Day	Date	Puloyas	on frame	Am	To	off frame	Am
		2 PK. Night	8.00	Pm	To	12.00	Am
		1	12.00	Am	To	4.00	Pm
		1	4.00	Am	To	8.00	Pm
SAT	14.3.2020	1 Am. Day	8.00	Am	To	12.00	Pm
361134		2	12.00	Pm	To	4.00	Pm
361791	657	1	5.00	Pm	To	8.00	Pm
		2 PK. Night	8.00	Pm	To	12.00	Am
		1	12.00	Am	To	4.00	Am
		2	4.00	Am	To	8.00	Am
SUN.	15.3.2020	1	8.00	Am	To	12.00	Pm
361791	Am Day.	2	12.00	Pm	To	4.00	Pm
362141	350	1 PK. Night	8.00	Pm	To	12.00	Pm
		2	4.00	Pm	To	8.00	Am
mon	16.3.2020	2	8.00	Am	To	12.00	Pm
362141	Am Day.	1	12.00	Pm	To	4.00	Pm
362754	613	2	5.00	Pm	To	8.00	Pm
		1 P.R	8.00	Pm	To	12.00	Am
		2	12.00	Am	To	4.00	Am
		1	5.00	Am	To	8.00	Am
TUE	17.3.2020	2	8.00	Am	To	12.00	Pm
362754	Am Day.	1	12.00	Pm	To	4.00	Pm
362989	235	2	5.00	Pm	To	8.00	Pm
		1 PK. Night	8.00	Pm	To	12.00	Am
		2	12.00	Am	To	4.00	Am
		1	5.00	Am	To	8.00	Am

Day	Date	PULover	ent time	Am	TO	OFF time
3 WED	18.3.2020	2	8.00	Am	TO	12.00
362989	Am. Daylate	1	12.00	Pm	TO	5.00
363440	451	2	5.00	Pm	TO	8.00
3 -	PK. Night	1	8.00	Pm	TO	12.00
363440	273	2	12.00	Am	TO	4.00
363713		1	5.00	Am	TO	8.00
3 THU	19.3.2020	2	8.00	Pm	TO	12.00
363713	Am. Night	1	12.00	Am	TO	4.00
363963	250	2	4.00	Am	TO	8.00
3 FRI	20.3.2020	1 PK. Day	8.00	Am	TO	12.00
363963		2	12.00	Pm	TO	4.00
		1	5.00	Pm	TO	8.00
3 SAT	21.3.2020	1 Am. Night	8.00	Pm	TO	12.00
363963		2	12.00	Am	TO	4.00
364421	458	1	4.00	Am	TO	8.00
3		2 P.K. Day	8.00	Am	TO	12.00
3		1	12.00	Pm	TO	5.00
3		2	5.00	Pm	TO	8.00
3 SUN	22.3.2020	1 Am Night	8.00	Pm	TO	12.00
364421		2	12.00	Am	TO	4.00
364827	406	1	4.00	Am	TO	8.00
3		2 Am Night	8.00	Pm	TO	12.00
364827		1	12.00	Am	TO	5.00
365041	214	2	5.00	Am	TO	8.00
MON	23.3.2020	1 PK Day	8.00	Am	TO	12.00
365041		2	12.00	Pm	TO	4.00
		1	5.00	Pm	TO	8.00

Day	Date	Pulley	on frame	Am	To	off frame	Am
365255 365473	218.	2 Nigte	9.00	Pm	To	12.00	Am
		1	12.00	Am	To	4.00	Am
		2	4.00	Am	To	8.00	Am
TUE	24.3.2020	1 P.K. Day	8.00	Am	To	12.00	Pm
365473		2	12.00	Am	To	4.00	Pm
		1	4.00	Am	To	8.00	Pm
	Am. Nigte	2	8.00	Pm	To	12.00	Am
365473		1	12.00	Am	To	4.00	Am
365837	364	2	4.00	Am	To	8.00	Am
WED	25.3.2020	1 P.K. Day	8.00	Am	To	12.00	Am
		2	12.00	Am	To	4.00	Pm
		1	5.00	Pm	To	8.00	Pm
365827		2 Am. Nigte	8.00	Pm	To	12.00	Am
366263	426	1	12.00	Am	To	4.00	Am
		2	4.00	Am	To	8.00	Am
THU	26.3.2020	1 P.K. Nigte	8.00	Pm	To	12.00	Pm
365837		2	12.00	Pm	To	4.00	Pm
366532	695	1	4.00	Am	To	8.00	Am
FRI	27.3.2020	2 Am. Day	9.00	Am	To	12.00	Pm
		1	12.00	Pm	To	4.00	Pm
		2	6.00	Pm	To	8.00	Pm
		1 P.K. Nigte	9.00	Pm	To	12.00	Am
		2	12.00	Am	To	4.00	Pm
		1	4.00	Pm	To	8.00	Am
SAT	28.3.2020	2 Am Day	8.00	Am	To	12.00	Pm
366532		1	12.00	Pm	To	4.00	Pm
367060	522	2	6.00	Pm	To	8.00	Pm

Day	Date	Pulover	on	from	Am.	To	off	from
	22.3.2020	1. PK. Nite	9.	00	Pm	To	12.	00
		2.	12.	00	Am	To	4.	00
		1	4.	00	Am	To	8.	00
SUN.								
2.29.3.2020	29.3.2020	1. Am. Day	9.	00	Am	To	12.	00
36 70 60		2.	12.	00	Pm	To	4.	00
36 74 29	369	1	3.	00	Pm	To	6.	00
		2. P.K. Nite	8.	00	AM	To	12.	00
		1	12.	00	AM	To	4.	00
		2	4.	00	AM	To	8.	00
MON.	30.3.2020	1 Am. Day	9.	00	Am	To	12.	00
36 74 29		2.	12.	00	Pm	To	4.	00
36 78 62	433	1	6.	00	Pm	To	9.	00
		2. PK Nite	9.	00	Pm	To	12.	00
		1	12.	00	AM	To	4.	00
		2	4.	00	AM	To	8.	00
TUE	31.3.2020	2 Am. Day	9.	00	Am	To	12.	00
36 78 62		1	12.	00	Pm	To	4.	00
36 82 39	377	2	4.	00	Pm	To	8.	00
		1. PK Nite	8.	00	AM	To	12.	00
		2	12.	00	AM	To	4.	00
		1	4.	00	AM	To	8.	00
WED	1.4.2020	2. Am. Day	11.	00	Am	To	4.	00
FRI	3.4.2020	1. PK. Day	12.	00	Pm	To	4.	00
		2	6.	00	AM	To	8.	00
SAT	4.4.2020	1. PK. Day	8.	00	AM	To	12.	00
		2	12.	00	AM	To	4.	00
		1	6.	00	Pm	To	8.	00

Day	Date	PuLoyar	on time	Am	To	off time	Am
SUN	5.4.2020	1	8.00	Am	To	12.00	Pm
368238		2.	12.00	Pm	To	4.00	Pm
369170	931 Day	1	4.00	Pm	To	7.00	Pm
	Night	2 Am	8.00	Pm	To	12.00	Am
369170		1	12.00	Am	To	4.00	Am
369386	216	2.	4.00	Am	To	8.00	Am
MON	6.4.2020	1 PK Day	8.00	Am	To	12.00	Pm
369386		2	12.00	Pm	To	4.00	Pm
369560	174	1	4.00	Pm	To	8.00	Pm
		1 Am night	9.00	Pm	To	12.00	Am
369560		2.	12.00	Am	To	4.00	Am
369769	209	1	5.00	Am	To	8.00	Am
TUE	7.4.2020	2 PK Day	9.00	Am	To	12.00	Pm
369769		1	12.00	Pm	To	4.00	Pm
369973	204	2	4.00	Pm	To	8.00	Pm
		1 Am night	8.00	Pm	To	12.00	Am
369973		2	12.00	Am	To	4.00	Am
370169	196	1	5.00	Am	To	8.00	Am
WED	8.4.2020	2 PK Day	8.00	Am	To	12.00	Pm
370169		1	12.00	Pm	To	4.00	Pm
		2	5.00	Pm	To	8.00	Pm
THU	9.4.2020	1 PK Day	8.00	Am	To	12.00	Pm
370169		2.	12.00	Pm	To	4.00	Pm
370583	414	1 PK night	8.00	Pm	To	12.00	Am
		2	12.00	Am	To	4.00	Am
		1	4.00	Am	To	8.00	Am

DAY	DATE	PULOYAIN	OFFICER	AM	TO	OFFICER	AM
FRI	10.4.2020	1	9.00	Am	TO	12.00	Pm
370583	Am. Day	2	12.00	Pm	TO	4.00	Pm
		1	6.00	Pm	TO	8.00	Pm
370583	Y	2. Pk. Night	9.00	Pm	TO	12.00	Am
371197	/614	1	12.00	Am	TO	4.00	Am
		2	4.00	Am	TO	8.00	Am
SAT	11.4.2020	1 Am. Day	8.00	Am	TO	12.00	Pm
371197		2	12.00	Pm	TO	4.00	Pm
371410	213	1	5.00	Pm	TO	8.00	Pm
		2. P. K. Night	9.00	Pm	TO	12.00	Am
		1	12.00	Am	TO	4.00	Am
		2	4.00	Am	TO	8.00	Am
SUN	12.4.2020	1 Am. Day	9.00	Am	TO	12.00	Pm
371410		2	4.00	Pm	TO	8.00	Pm
371809	/399	1 Pk. Night	9.00	Pm	TO	12.00	Am
		2	12.00	Am	TO	4.00	Am
		1	4.00	Am	TO	8.00	Am
MON	13.4.2020	1 Am. Day	9.00	Am	TO	12.00	Pm
371809		2	12.00	Pm	TO	4.00	Pm
372135	/324	1	6.00	Pm	TO	8.00	Pm
		2. Pk. Night	9.00	Pm	TO	12.00	Pm
		1	12.00	Am	TO	4.00	Am
		2	4.00	Am	TO	8.00	Am
TUE	14.4.2020	1	9.00	Am	TO	12.00	Pm
372136		2	2.00	Pm	TO	7.00	Pm
372512	/377						

Day.	Date.	PULOXAR	ON. time.	Am	To	OFF time.	Am
	PK night	1	9.00	PM	To	12.00	AM
		2	12.00	AM	To	4.00	AM
		1	4.00	AM	To	8.00	AM
WED	15.4.2020	2	9.00	AM	To	12.00	PM
372512		1	3.00	PM	To	6.00	PM
372872	360						
	PK night	2-A	9.00	PM	To	12.00	AM
		1	12.00	AM	To	4.00	AM
		2	4.00	AM	To	8.00	AM
THU	16.4.2020	1 AM. Day	9.00	AM	To	12.00	PM
372872		2.	3.00	PM.	To	6.00	PM
372872		1 AM. Night	8.00	PM	To	12.00	AM
373349	477	2	4.00	AM	To	8.00	AM
FRI	17.4.2020	1 P.K. Day	8.00	AM	To	12.00	PM
		2	12.00	PM	To	3.00	PM
		2	5.00	PM	To	8.00	PM
373349		1 AM. Night	9.00	PM	To	12.00	AM
373690	341	2.	4.00	AM	To	8.00	AM
SAT	18.4.2020	1 PK. Day	8.00	AM	To	12.00	PM
		2	12.00	PM	To	4.00	PM
		1	4.00	PM	To	8.00	PM
373690		1 AM. Night	9.00	PM	To	12.00	AM
374053	363	2	4.00	AM	To	8.00	AM
SUN	19.4.2020	1 P.K. Day	8.00	PM	To	Levu.	
374053		1 AM. Night	8.00	PM	To	12.00	AM
374210	157	2	4.00	PM	To	8.00	AM

Day	Date	POLYCARBON	ON	Off time	Am	TO	OFF time
MON	20.4.2020	1. PK Day	8. 00	Am	TO	12. 00	
		2	12. 00	Pm	TO	4. 00	
		1	5. 00	Pm	TO	8. 00	
374210		2. Am Night	8. 00	Pm	TO	12. 00	
374579	369	1	4. 00	Am	TO	8. 00	
TUE	21.4.2020	2. PK Day	8. 00	Am	TO	12. 00	
		1	12. 00	Pm	TO	4. 00	
		2	4. 00	Pm	TO	8. 00	
374579		1 Am Night	9. 00	Pm	TO	12. 00	
374959	380	2	4. 00	Am	TO	8. 00	
WED	22.4.2020	1. PK Day	8. 00	Am	TO	12. 00	
		2	12. 00	Pm	TO	4. 00	
		1	4. 00	Pm	TO	7. 00	
374959		2. Am Night	9. 00	Pm	TO	12. 00	
875276	317	1	4. 00	Am	TO	8. 00	
THU	23.4.2020	2. PK Night	8. 00	Pm	TO	12. 00	
		1	12. 00	Am	TO	4. 00	
		2	4. 00	Am	TO	8. 00	
FRI	24.4.2020	2 Am Day	8. 00	Am	TO	12. 00	
375276		1	12. 00	Pm	TO	4. 00	
375767	491	2	6. 00	Pm	TO	8. 00	
		1. PK Night	8. 00	Pm	TO	12. 00	
		2	12. 00	Am	TO	4. 00	
		1	4. 00	Am	TO	8. 00	

Day.	Date	Employer	On-time	Am	To	Off-time	Am
SAT	25.4.2020	2. Am Day	8. 00	Am	To	12. 00	Pm
375767	392	1	12. 00	Pm	To	4. 00	Pm
376189		2	6. 00	Pm	To	8. 00	Pm
		1. Pk. Night	8. 00	Pm	To	12. 00	Am
		2	12. 00	Am	To	4. 00	Am
		1	4. 00	Am	To	8. 00	Am
SUN.	26.4.2020	2. Am Day	8. 00	Am	To	2. 00	Pm
376189	397	1	3. 00	Pm	To	7. 00	Pm
376586							
		2. Pk. Night	9. 00	Pm	To	12. 00	Am
		1	12. 00	Am	To	4. 00	Am
		2.	4. 00	Am	To	8. 00	Am
MON.	27.4.2020	1 Am Day	8. 00	Am	To	12. 00	Pm
376586	413	2	2. 00	Pm	To	4. 00	Pm
376999		1	5. 00	Pm	To	8. 00	Pm
		2 Pk. Night	9. 00	Pm	To	12. 00	Am
		1	12. 00	Am	To	4. 00	Am
TUE	28.4.2020	1. Am Day	11. 00	Am	To	2. 30	Pm
376999	302	2	5. 00	Pm	To	8. 00	Pm
377301							
		1 Pk. Night	9. 00	Pm	To	12. 00	Am
		2.	12. 00	Am	To	4. 00	Am
		1	4. 00	Am	To	7. 00	Am
WED	29.4.2020	2. Am Day	10. 00	Am	To	2. 00	Pm
377301	367	1	3. 00	Pm	To	7. 30	Pm
377668							

Day	Date	PULOVAN on flame	on	To	off flame	Am
		2 PK. Night	9. 00 Pm	To	12. 00 Am	
		1	12. 00 Am	To	4. 00 Pm	
		2	4. 00 Am	To	7. 00 Am	
THU	30.4.2020	1. Am. Night	8. 00 Pm	To	12. 00 Am	
377668		2.	4. 00 Am	To	7. 30 Am	
378020	302					
FRI	1.5.2020	1. PK. Day	9. 00 Am	To	12. 00 Pm	
		2	12. 00 Pm	To	4. 00 Pm	
		1	4. 00 Pm	To	8. 30 Pm	
378020		2. Am. Night	9. 00 Pm	To	12. 00 Am	
378419	239	1	4. 00 Am	To	8. 00 Am	
SAT.	2.5.2020	2. PK. Day	9. 00 Am	To	12. 00 Pm	
		1	12. 00 Pm	To	4. 00 Pm	
		2	4. 00 Pm	To	8. 00 Pm	
378419		1 Am Night	8. 00 Pm	To	12. 00 Am	
378843	424	2.	4. 00 Am	To	8. 00 Am	
SUN.	3.5.2020	1. PK. Day	8. 00 Am	To	12. 00 Pm	
		2	12. 00 Pm	To	4. 00 Pm	
		1	4. 00 Pm	To	7. 00 Pm	
378843		2. Am. Night	9. 00 Pm	To	12. 00 Am	
379212	369	1	4. 00 Am	To	7. 00 Am	
		2	7. 00 Am	To	8. 00 Am	
MON	4.5.2020	1 PK. Day	9. 00 Am	To	12. 00 Pm	
		2	12. 00 Pm	To	4. 00 Pm	
		1	5. 00 Pm	To	8. 00 Pm	

Day	Date	Employer	on time	Am	TO	off time	Am
379212		1. Am Night	9. - 60	Pm	TO	1. 00	Am
		2	4. 00	Am	TO	7. 00	Am
TUE	5.5.2020	PK Day	oldest	Pm	TO	9. 30	Pm
		2	6. 00	Pm	TO	9. 30	Pm
379212		1. Am Night	9. 00	Pm	TO	12. 00	Am
379802	590	2	3. 00	Am	TO	6. 00	Am
		1	6. 00	Am	TO	9. 00	Am
WED.	6.5.2020	2. PK Day	9. - 00	Am	TO	12. 00	Pm
		1	12. 00	Pm	TO	4. 00	Pm
		2	4. 00	Pm	TO	8. 00	Am
379802		2. Am Night	9. 00	Pm	TO	12. 00	Am
380218		1	4. 00	Am	TO	8. 00	Am
THU	7.5.2020	2. PK Night	8. 00	Pm	TO	12. 00	Pm
		1	12. 00	Am	TO	4. 00	Am
		2	4. 00	Am	TO	8. 00	Am
FRI	8.5.2020	2. Am Day	9. 00	Am	TO	12. 00	Pm
380218		1	12. 00	Pm	TO	4. 00	Pm
380678		2	5. 00	Pm	TO	8. 00	Pm
SAT	9.5.2020	1 Am Day	9. 00	Am	TO	12. 00	Pm
380678		2	12. 00	Pm	TO	4. 00	Pm
381098		1	6. 00	Pm	TO	7. 40	Pm
SUN	10.5.2020	1 Am Day	9. 00	Am	TO	12. 00	Pm
381324		2	12. 00	Pm	TO	3. 00	Pm
381476		1	4. 00	Pm	TO	7. 30	Pm

DAY	DATE	PULOYOR	on-time	Am	To	off-time	A
MON	11.5.2020	1. AM Day	2. 00	AM	TO	12. 00	P
381676	105	2	12. 00	PM	TO	3. 00	P
381781		1	5. 00	PM	TO	8. 00	P
TUE	12.5.2020	1 Day	2. 00	AM	TO	12. 00	P
		2.	12. 00	PM	TO	4. 00	AM
WED	13.5.2020	Day. Piland	-	-	-	Work 5	
THU	14.5.2020	L. eeyo	-	-	-	-	
FRI	15.5.2020	1. Night	8. 00	PM	TO	12. 00	AM
382552	217	2	12. 00	AM	TO	4. 00	AM
382769		1	5. 00	AM	TO	8. 00	AM
SAT	16.5.2020	1 Night	8. 00	PM	TO	12. 00	AM
382979	212	2	12. 00	AM	TO	4. 00	AM
383191		1	5. 00	AM	TO	8. 00	AM
SUN	17.5.2020	1 Night	8. 00	PM	TO	12. 00	AM
383191	343	2.	4. 00	AM	TO	8. 00	AM
383534							
MON	18.5.2020	Night-1	8. 00	PM	TO	12. 00	AM
383534	608	2	4. 00	AM	TO	8. 00	AM
384202							
TUE	19.5.2020	Day	9. 00	AM	TO	12. 00	PM
384212	290	1-PK. Day	2. 00	PM	TO	4. 00	AM
384402		2	4. 00	AM	TO	7. 00	PM
		1					
	20.5.2020	2. Night	9. 00	PM	TO	12. 00	AM
384402		1	4. 00	AM	TO	8. 00	AM
384595							

Day.	Date	Puloyar	on. time	Am	To	off time	Am
WED.	20.5.2020	2. PM Day	9. 00	AM	To	12. 00	PM
		1	1. 00	PM	To	3. 00	AM
		2	6. 00	AM	To	8. 00	PM
384595		1. Am. Night	9. 00	PM	To	12. 00	AM
384949	354	2.	4. 00	AM	To	7. 30	AM
FRI	22.5.2020	2. PK Night	8. 00	AM	To	12. 00	PM
384959		2.	12. 00	PM	To	4. 00	AM
385193	334	1	4. 00	AM	To	8. 00	PM
385193		2. Am. Day	8. 00	AM	To	12. 00	PM
385358	165	1	4. 00	PM	To	8. 00	PM
SAT	23.5.2020	2. PK Night	8. 00	PM	To	12. 00	AM
385358		1	12. 00	AM	To	4. 00	PM
385592	334	2	4. 00	PM	To	8. 00	AM
SAT							
385592	24.5.2020	1. Am. Day	8. 00	AM	To	12. 00	PM
385798	206	2.	12. 00	PM	To	4. 00	PM
		1	6. 00	PM	To	8. 00	PM
SUN	24.5.2020	2. PK Night	8. 00	PM	To	12. 00	AM
385798		1	12. 00	AM	To	4. 00	AM
386022	334	2.	4. 00	AM	To	8. 00	AM
SUN	24.5.2020	1. Am. Day	9. 00	AM	To	12. 00	PM
386022		2.	12. 00	PM	To	4. 00	PM
386212	190	1	6. 00	PM	To	8. 00	PM
	25.2020	2. PK Night	8. 00	PM	To	12. 00	AM
386212			12. 00	AM	To	4. 00	AM
386428	226		4. 00	PM	To	8. 00	AM

Day	Date	Pol	Loc	on	time	Am	To	off	time	Ar
MON	25.5.2020	1	Am	Day	8. 00	Am	To	12. 00	pm	
386428		2			12. 00	Pm	To	4. 00	pm	
386520	205	.								
386520		1	PK-Night		8. 00	Pm	To	12. 00	Am	
380757	237	2			12. 00	AM	To	4. 00	PM	
		1			4. 00	PM	To	8. 00	AM	
TUE	26.5.2020	2	Am	Day	8. 00	Am	To	12. 00	pm.	
386757		1			3. 00	Pm	To	8. 00	pm	
386939	218									
386939		2	PK-Night		8. 00	Pm	To	12. 00	Am	
387154	215	1			12. 00	AM	To	4. 00	PM	
		2			4. 00	PM	To	8. 00	AM	
WED	27.5.2020	1	Am	Day	8. 00	Am	To	12. 00	pm	
387154		2			12. 00	Pm	To	4. 00	pm	
387305	352	1			5. 00	Pm	To	7. 30	Pm	
387305		2	PK-Night		8. 00	Pm	To	12. 00	Am	
387565	365	1			12. 00	AM	To	4. 00	PM	
		2			4. 00	PM	To	8. 00	AM	
FRI	29.5.2020	1	PK	Day	8. 00	AM	To	12. 00	PM	
387565		2			1. 00	PM	To	5. 00	PM	
		1			5. 00	PM	To	8. 00	PM	
387565		2	Am	Night	8. 00	Pm	To	12. 00	Am	
387889	324	1			4. 00	Am	To	8. 00	Am	
SAT	30.5.2020	1	PK	Day	8. 00	Am	To	12. 00	pm.	
387889		2			12. 00	Pm	To	4. 00	pm	
388058	169	1			5. 00	Pm	To	8. 00	pm	

Day	Date	Pullover	on	from	Am	To	off	from	Am
28068 28137	129	2 AM Night	8.00	PM	TO	12.00	AM		
		1	4.00	AM	TO	8.00	AM		
5000 8187 8405	31.5.2020 278	2 PK Day	9.00	AM	TO	1.00	PM		
		1	2.00	PM	TO	5.00	PM		
		2	5.00	AM	TO	8.00	PM		
8405 8538	133	1 AM Night	8.00	PM	TO	12.00	AM		
		2	4.00	AM	TO	8.00	AM		
1000 8538 8768	1.6.2020 280	1 PK Day	9.00	AM	TO	1.00	PM		
		2	2.00	PM	TO	5.00	PM		
		1	6.00	AM	TO	9.00	PM		
8768 8903	135	2 AM Night	9.00	PM	TO	12.00	AM		
		1	4.00	AM	TO	8.00	AM		
TUE 8903 9095	2.6.2020 192	2 PK Day	9.00	AM	TO	1.00	PM		
		1	2.00	PM	TO	4.00	PM		
		2	6.00	AM	TO	8.00	PM		
9095 9224	129	1 AM Night	8.00	PM	TO	12.00	AM		
		2	4.00	AM	TO	8.00	AM		
WED 9224 9456	3.6.2020 232	2 PK Day	9.00	AM	TO	1.00	PM		
		2	2.00	PM	TO	5.00	PM		
		1	5.00	PM	TO	8.00	PM		
85456 9594	138	2 AM Night	8.00	PM	TO	12.00	AM		
		1	4.00	AM	TO	8.00	AM		
THU 9594 9805	4.6.2020 211	2 PK Night	9.00	PM	TO	12.00	AM		
		1	12.00	AM	TO	4.00	AM		
		2	4.00	AM	TO	8.00	AM		

Day	Date	PULOYOR	on-hand	Am	To	off-hand	on
FRI	5.6.2020	2. Am. Day	8. 00	Am	To	12. 00	Pm
389805		1	2. 00	Pm	To	4. 00	Pm
389963	158	2	5. 30	Pm	To	8. 00	Pm
389963		1-PK. Night	8. 00	Pm	To	12. 00	Am
389963		2.	12. 00	Am	To	4. 00	Am
390182	219	1	4. 00	Am	To	8. 00	Am
SAT.	6.6.2020	2. Am. Day	8. 00	Am	To	12. 00	Pm
		1	4. 00	Pm	To	8. 00	Pm
		2-PK. Night	8. 00	Pm	To	12. 00	Am
390182		1	12. 00	Am	To	4. 00	Am
390555	373	2	4. 00	Am	To	8. 00	Am
SUN.	7.6.2020	1 Am. Day	9. 00	Am	To	12. 00	Pm
390555		2.	2. 00	Pm	To	5. 30	Pm
390771	216	1	5. 30	Pm	To	7. 30	Pm
		2 PK. Night	8. 00	Pm	To	12. 00	Am
390771		1	12. 00	Am	To	4. 00	Am
390985	224	2.	4. 00	Am	To	8. 00	Am
MON.	8.6.2020	1 Am. Day	8. 00	Am	To	12. 00	Pm
390985		2.	12. 00	Pm	To	3. 00	Pm
391163	178	1	5. 00	Pm	To	8. 00	Pm
		2-PK. Night	8. 00	Pm	To	12. 00	Am
391163		1	12. 00	Am	To	4. 00	Am
391380	227	2	4. 00	Am	To	8. 00	Am
TUE	9.6.2020	1. Am. Day	8. 00	Am	To	12. 00	Pm
391380		2.	1. 00	Pm	To	4. 00	Pm
391563	187	1	6. 00	Pm	To	7. 30	Pm

Day	Date	PULO year	on time	Am	To	off time	Am
		2. PK. Night	9. 00	3m	TO	12. 00	AM
91563	>	1	12. 00	AM	TO	4. 00	AM
91784		2	4. 00	AM	TO	8. 00	AM
WED	10.6.2020	1. Am Day	8. 00	AM	TO	12. 00	PM
391784	>	2.	12. 00	PM	TO	4. 00	PM
391984		1	5. 00	PM	TO	9. 00	PM
		2 PK. Night	3. 00	PM	TO	1. 00	AM
39.1984	>	1	1. 00	AM	TO	5. 00	AM
39.2175		2	5. 00	AM	TO	8. 00	AM
Thu		Weeks	-	-	-	Day.	
		1. Am Night	8. 00	PM	TO	12. 00	AM
FR:	12.6.2020	2. PK. Day	9. 00	AM	TO	1. 00	PM
392775	>	1	1. 00	PM	TO	5. 00	PM
		2	5. 00	PM	TO	8. 00	PM
392175	>	1 Am Night	9. 00	PM	TO	12. 00	AM
392467		2	4. 00	AM	TO	7. 30	AM
SAT	13.6.2020	1 PK. Day	9. 00	AM	TO	11. 00	PM
392467	>	2	2. 00	PM	TO	5. 00	PM
392670		1	5. 00	PM	TO	8. 00	PM
		2 Am Night	9. 00	PM	TO	12. 00	AM
392670	>	1	4. 00	AM	TO	7. 00	AM
392810							
SUN.	14.6.2020	2. PK. Day	9. 00	AM	TO	1. 00	AM.
392870	>	1	3. 00	PM	TO	7. 00	PM.
392952							

DAY	DATE	PULOVER	on-home	Am	TO	off-home	Am
		1. Am Night	9. 00	Pm	TO	12. 00	Am
392952	(153)	2.	4. 00	Am	TO	7. 00	Am
393105	15.6.2020						
MON.	15.6.2020	1 PK Day	9. 00	Am	TO	1. 00	Pm
393105		2	2. 00	Pm	TO	5. 00	Pm
393343	238	1	5. 00	Pm	TO	8. 00	Pm
393343		2 Am Night	9. 00	Pm	TO	12. 00	Am
393478	235	1	4. 00	Am	TO	8. 00	Am
TUE	16.6.2020	2. PK Day	8. 00	Am	TO	10. 00	Pm
393478		1	12. 00	Pm	TO	4. 00	Pm
393685	207	2	4. 00	Pm	TO	7. 00	Pm
393685		1. Am Night	9. 00	Pm	TO	11. 00	Pm
393776		2	4. 00	Am	TO	6. 00	Am
		1	7. 00	Am	TO	8. 00	Am
WED	17.6.2020	2. PK Day	10. 00	Pm	TO	12. 00	Pm
393776		1	2. 00	Pm	TO	4. 00	Pm
393926	150	2	6. 00	Pm	TO	8. 00	Pm
		1. Am Night	10. 00	Pm	TO	12. 00	Am
		2.	4. 00	Am	TO	6. 00	Am
THU	18.6.2020	Lee	VU	-	-	-	-
FRI	19.6.2020	1 PK Night	8. 00	Pm	TO	10. 00	Am
393426		2	12. 00	Am	TO	2. 00	Am
394113	187	1	6. 00	Am	TO	8. 00	Am

Day	Date	POLYMER	on time	Am	TO	off time	Am
FRI	19.6.2020	1. Am Day	8. 00	Am	TO	12. 00	Pm
394113	139	2.	2. 00	Pm	TO	5. 00	Pm
394252		1. PM Night	8. 00	Pm	TO	10. 00	Pm
394252	123	2	12. 00	Am	TO	2. 00	Pm
394375		1	4. 00	Am	TO	6. 00	Am
SAT	20.6.2020	1. Am Day	8. 00	Am	TO	10. 00	Am
394375	137	2	12. 00	Pm	TO	2. 00	Pm
394492		1	4. 00	Pm	TO	6. 00	Pm
394492	126	2. PM Night	8. 00	Pm	TO	10. 00	Pm
394608		1	12. 00	Am	TO	2. 00	Am
		2	5. 00	Am	TO	7. 00	Am
SUN	21.6.2020	1 Am. Day	8. 00	Am	TO	12. 00	Pm
394608	128	2.	4. 00	Pm	TO	7. 00	Pm
394726		1. PM Night	8. 00	Pm	TO	10. 00	Pm
394726	128	2	12. 00	Am	TO	2. 00	Am
394844		1	5. 00	Am	TO	7. 00	Am
MON	22.6.2020	2. Am. Day	8. 00	Am	TO	12. 00	Pm
394844	142	1	12. 00	Pm	TO	2. 30	Pm
394985		2	4. 00	Pm	TO	5. 30	Pm
		1 PM Night	8. 00	Pm	TO	9. 30	Pm
394985	141	2	9. 30	Pm	TO	11. 00	Pm
395126		1	3. 00	Am	TO	5. 00	Am

Day	Date	Puloyas	on	france	Am	To	off	france	3
TUE	23.6.2020	1	Am Day	9. 00	Am	To	12. 00	Pm	
395126		2		12. 00	Pm	To	2. 00	Pm	
395299		1		5. 00	Pm	To	7. 30	Pm	
395299		2	Pk. night	9. 00	Pm	To	12. 00	Pm	
395473		1		2. 00	Am	To	5. 00	Am	
		2		5. 00	Am	To	8. 00	Am	
WED.	24.6.2020	1	Am Day	8. 00	Am	To	11. 30	Am	
395473		2		12. 00	Pm	To	2. 00	Pm	
395646		1		4. 00	Pm	To	7. 00	Pm	
395646		2	Pk. night	9. 00	Pm	To	11. 00	Pm	
395802		1		1. 00	Am	To	3. 00	Am	
		2		5. 00	Am	To	7. 00	Am	
THU	25.6.2020	— leave — — — — —							
395646		2	LAK NITE	9. 00	Pm	To	12. 00	Pm	
		2		2. 00	Am	To			
FRi	26.6.2020	2	Am night	9. 00	Pm	To	12. 00	Am	
395802		1		3. 00	Am	To	6. 00	Am	
395944		2		6. 00	Am	To	8. 00	Am	
SAT.	27.6.2020	2	Pk. Day	8. 00	Am	To	12. 00	Pm	
395944		1		2. 30	Pm	To	5. 00	Pm	
396191		2		5. 00	Pm	To	7. 30	Pm	

Day	Date	Pulover	on fiam	Am	To	off fiam	
		1. Am. Night	9. 00	pm	TO	12. 00	
396191		2	4. 00	Am	TO	8. 00	
396335	144	1	6. 00	Am	TO	7. 30	
SUN	28.6.2020	2 PK. Day	8. 00	Am	TO	12. 00	
396197		1	2. 00	pm	TO	5. 00	
396497	300	2.	6. 00	pm	TO	8. 00	
396497		1 Am. Night	9. 00	pm	TO	12. 00	
396619	122	2.	4. 00	pm	TO	7. 30	
MON	29.6.2020	1 PK. Day	12. 00	Am	TO	2. 00	
396619		2	3. 00	PM	TO	5. 00	
396820	99	1	5. 00	PM	TO	7. 30	
396820		1. Am. Night	9. 00	pm	TO	12. 00	
396953	133	2.	4. 00	Am	TO	7. 30	
TUE	30.6.2020	1. PK. Day	8. 00	Am	TO	12. 00	
396935		2	2. 00	PM	TO	5. 00	
397228	183	1	5. 00	PM	TO	7. 30	
397118		2. Am. Night	9. 00	pm	TO	12. 00	
397265	147	1	4. 00	Am	TO	8. 00	
WED	1.7.2020	2. PK. Day	8. 00	Am	TO	12. 00	
397265			12. 00	PM	TO	4. 00	
397471	206		5. 00	pm	TO	8. 00	
397471		1. Am. Night	8. 00	pm	TO	12. 10	
397610	239	2.	4. 00	Am	TO	7. 30	

Day.	Date	Post/Officer	on time	Am	To	off time	Am
397610		IPK. Night	9	00 PM	To	12	00 AM
397749		2.	2	00 AM	To	4	00 AM
		1	5	00 AM	To	8	00 AM
FRI	3.7.2020	2. Am. Day	8	00 AM	To	12	00 PM
397749		1	2	00 PM	To	5	00 PM
397955		2	5	00 PM	To	7	30 PM
SAT	4.7.2020	1 Am Day	8	00 AM	To	12	00 PM
397955		2.	12	00 PM	To	3	00 PM
398165		1	5	00 PM	To	8	00 PM
SUN	5.7.2020	1.	10	00 AM	To	2	00 PM
MON	6.7.2020	2. Am. Day	8	00 AM	To	11	00 AM
398165		1	11	00 AM	To	2	00 PM
398481		2	3	00 PM	To	7	30 PM
TUE	7.7.2020	2 Am Day	8	00 AM	To	12	00 PM
398481		1	12	00 PM	To	4	00 PM
398721		2.	5	00 PM	To	—	—
398721		1-PK. Night	9	00 PM	To	12	00 AM
398876		2.	3	00 AM	To	6	00 AM
		1	6	00 AM	To	8	00 AM

Day	Date	POLYCARB	ons. time	Am	To	off time	Am
WED	8.7.2020	1. AM Day	8. 00	AM	TO	12. 00	P
398876		2.	12. 00	PM	TO	3. 00	P
399043	167	1	5. 00	PM	TO	7. 30	P
THU	9.7.2020	1 AM Day	8. 00	AM	TO	12. 00	P
399043		2.	12. 00	PM	TO	3. 00	P
399219	176	1	5. 00	PM	TO	7. 30	P
FRI	10.7.2020	1. AM Day	8. 00	AM	TO	12. 00	P
399219		2.	12. 00	PM	TO	3. 00	P
399349	130	1	6. 00	PM	TO	7. 00	P
SAT	11.7.2020	2. PK Day	10. 00	AM	TO	12. 00	P
399349							
399395	146						
SUN							
MON	13.7.2020	2. PK Day	8. 30	AM	TO	11. 00	A
399395		1	4. 30	PM	TO	6. 00	P
399479	184						
TUE	14.7.2020	C. T. 11.00 no TAY. 59	9. 20	AM	TO	11. 30	A
399479		1. AM Day	11. 30	AM	TO	1. 00	P
399582	103	2.	5. 00	PM	TO	6. 00	P
WED	15.7.2020	1. PK Day	9. 00	AM	TO	11. 00	A
399583		2.	4. 30	PM	TO	7. 00	P
399669	86						
THU	16.7.2020	2. AM Day	10. 30	AM	TO	1. 00	P
399669		1	3. 00	PM	TO	6. 00	P
399766	97						

Air Blower

7

Day	Date	PULGAR	ontime	Am	To	off time	Am
FRI	17.7.2020	2. PK Day	9. 00	Am	To	11. 00	Am
399766	179.	1	6. 00	Pm	To	7. 00	Pm
399845						4 hrs	
SAT	18.7.2020	1. Am Day	9. 00	Am	To	10. 00	Am
399845	78	2.	6. 00	Pm	To	7. 00	Pm
399923						12 hrs	
MON	20.7.2020	1. PK Day	9. 00	Am	To	11. 00	Am
399923	62	2	6. 00	Am	To	7. 00	Pm
399984						1	
TUE	21.7.2020	2. Am Day	9. 00	Am	To	11. 00	Am
399984	56.	1	6. 00	Pm	To	7. 00	Pm
400040						1	
WED	22.7.2020	2. PK Day	9. 00	Am	To	11. 00	Am
400040	84	1.	5. 30	Pm	To	7. 00	Pm
400124						1	
THU	23.7.2020	2. Am Day	9. 00	Am	To	11. 00	Am
400124	57	1	5. 30	Pm	To	6. 30	Pm
400181						1	
FRI	24.7.2020	2. PK Day	9. 00	Am	To	11. 00	Am
400181	78	1	5. 30	Pm	To	6. 45	Pm
400259						1	
SAT	25.7.2020	2. Am Day	9. 00	Am	To	11. 00	Pm
400259	107.	1					
400366							

Day	Date	Blk	Yr	Off	Time	Am	To	Off	Time
MON	27.7.2020	1	PK	Day	9.00	Am	To	11.00	
400366		2.			5.30	Pm	To	6.30	
400427	61								
TUE	28.7.2020	1	Am	Day	9.00	Am	To	11.00	
400366		2.			5.30	Pm	To	7.00	
400496	130								
WED	29.7.2020	1	PK	Day	9.00	Am	To	11.00	
400496									
400534	38								
THU	30.7.2020	2	Am	Day	9.00	Am	To	11.00	
400534		3.			00	Pm	To	5.30	
400621	87.								
FRI	31.7.2020	1	PK	Day	9.00	Am	To	?	
400621									
SAT	1.8.2020	2	Am	Day	9.00	Am	To	11.00	
400621									
400631	70								
MON	2.8.2020	2	PK	Day	9.00	Am	To	11.00	
400631									
400720	29								
TUE	4.8.2020	1	Am	Day	9.00	Am	To	10.30	
400720		2.			4.00	Pm	To	6.30	
400792	72								

Blower

9

DAY.	Date.	BULOYAT ON-TIME	Am.	To	OFF TIME	Am.
WED	5.8.2020	1. AM Day	9. 00	Am	To	11. 00 Am
400732	37					
400823						
THU	6.8.2020	-	-	-	-	-
FRI	7.8.2020	2. PM Day	9. 00	Am	To	11. 00 Am
400823	58	1	5. 00	PM	To	6. 00 PM
400887						
SAT.	8.8.2020	2. AM Day	9. 00	Am	To	11. 00 PM
400887	41					
400928						
SUN	9.8.2020	-	-	-	-	-
MON	10.8.2020	1. P.K. Day	9. 00	AM	To	11. 00 AM
400928	54	2.	5. 00	PM	To	6. 00 PM
400982						
TUE	11.8.2020	1. AM Day	9. 00	AM	To	11. 00 AM
400982	93					
401075						
WED	12.8.2020	2. P.K. Day	9. 00	AM	To	11. 00 AM
401075	54	1	5. 00	PM	To	6. 00 AM
401132						
THU	13.8.2020	-	-	-	-	-
FRI	14.8.2020	2. AM Day	10. 00	AM	To	12. 00 PM
401132	69	1	5. 00	PM	To	6. 00 PM
401201						

DAY	DATE	BULAYAR	OFFICE	AM	TO	OFFICE
MON.	17.8.2020	1. P.K. Day	9. 00	AM	TO	11. 00
401201		Crawinda	Water			4. TO 5.30
401332	132					
TUE	18.8.2020	2. AM. Day	9. 00	AM	TO	11. 00
401332						
401401	69					
WED	19.8.2020	1. P.K. Day	9. 00	AM	TO	11. 00
401401						
401443	42					
THU	20.8.2020	2. AM. Day	9. 00	AM	TO	11. 00
401443						
401481	38					
FRI	21.8.2020	1. P.K. Day	9. 00	AM	TO	12. 00
401481						
401538	57					
SAT	22.8.2020	2. AM. Day	9. 00	AM	TO	11. 00
401538		1. AM. Bulayar	10. 30	AM	TO	1. 00
401715	177	2. 1. 00	PM	TO	4. 00	
		1. 4. 00	PM	TO	6. 00	
MON.	24.8.2020	2. P.K. Day	9. 00	AM	TO	11. 00
401715						
401794	79					
TUE	25.8.2020	1. AM. Day	10. 00	AM	TO	11. 00
401794		Crawinda	Vaffar	3.00	TO	
401872	78					

Day	Date	BULOYAN	from	AM	TO	off from	PM
THU	27.8.2020	Cirrawido	vafar	3	3	TO 5	PM
		401872					
		401910		38			
SAT	29.8.2020	Cirrawido	vafar			4	TO 530 PM
		401910					
		401967		57			
MORU	31.8.2020	Cirrawido	vafar			4	530
		401967					
		402007	40				
			Cirrawido	vafar			
TUE	22.9.2020						
		402007					
		402222	213				
			Cirrawido	vafar			
		402222	30.9.2020				
		402356	134				
			Cirrawido	vafar			
THU	8.10.2020	Cirrawido	vafar				
		402356					
		402569	213				
FRI							
		402569					
		402569					
			Cirrawido	vafar			
	17/10/2020	17.8.2020					
		402569					
		402767	198				
	2.11/20						
		402767					
		403015	248				

659.0000